

PARK Bugle

OCTOBER 1994
VOLUME 21, NO. 4

FREE COPY
11,300 PRINTED

Serving the communities of St. Anthony Park, Lauderdale,
Falcon Heights and Northwest Como Park.

Breakfast with the mayor



Photo by Truman Olson

St. Paul Mayor Norm Coleman spoke to members of the St. Anthony Park Business Association at a breakfast meeting held at Luther Seminary on Sept. 12. Coleman said it is his job to keep the city "safe and clean and productive. When you do those things, attitudes change, possibilities change." The mayor said that a business service center, providing a single source for businesses dealing with the city, is one of his goals.

Liquor license debate brewing for new businesses at Milton Square

By Julie Lehr

Should there be a take-out liquor store in the Milton Square complex on Como and Carter Avenues?

That question will be considered by the St. Anthony Park Community Council at its regular board meeting on Wednesday, Oct. 12, 7 p.m., at the St. Anthony Park Library, 2245 Como Ave. Area residents are invited to the meeting to express their opinions—both pro and con—on the matter.

Plans for a liquor store that would sell primarily imported wine and beer were unveiled at a Sept. 1 meeting of the community council's Physical Planning Committee by Soile Anderson and her business partner,

Dr. Marcos Herrera. Anderson and Herrera are planning to open a European-style bakery, catering service and deli in Milton Square by October 1.

The bakery, Taste of Scandinavia, will feature pastries from all over the world. Anderson is well known for fine catering. She operated The Deco, a restaurant in the Minnesota Museum of Art, for 13 years. She has another bakery in North Oaks. The bakery and deli will occupy the extensively remodeled space on the lower level of Milton Square where Pam Sherman's used to be.

The liquor license application actually involves two requests: one for an on-sale license to permit the sale of wine and beer by the glass in L'Europa, the

deli, and a second, off-sale license to permit sale of bottled liquor in a store separate from the deli and bakery.

Though the paperwork on the license request had not been forwarded by the city's licensing department prior to the Sept. 1 meeting, the Physical Planning Committee, impressed with Anderson's and Herrera's

Liquor to 9

Como, St. Anthony Park may see double-digit property tax hikes in '95

By Jane McClure

St. Paul residents who faced hefty property tax increases in 1994 may be in for more of the same in 1995, even if the combined total levy increase for the St. Paul Public Schools, Ramsey County and City of St. Paul is held at 2.7 percent. That's one of the more painful truths emerging as local units of government set 1995 tax levies as part of the state-mandated "truth-in-taxation" process.

As property tax levies and budgets for local units of government take shape, it appears much of the increased property tax burden will fall on the western part of the city. Some North St. Anthony Park and Como Park residents may see property tax hikes up to 23.1 percent in 1995. Other areas will see increases of 5 to 10 percent. The percentages are a reflection not only of the tax levy but also of increases in property valuations.

The School Board, City Council and County Board are required to adopt a joint levy by Sept. 1, and maximum property tax levies by Sept. 15. After that, property tax levies and budgets can be cut, but not increased.

In St. Paul, local units of government also are required to work together on property tax issues. The Joint Property Tax Committee, which is made up of city, county and school district

officials, adopted a proposed 2.7 percent levy increase on Aug. 29. That figure reflects levy increases for the three jurisdictions, and the effect those increases will have on the overall amount of property tax levied in the city.

City officials have already pledged they will not increase St. Paul's share of the property tax levy. Ramsey County Board members are eyeing a proposed 1.85 percent levy increase, to see if it can be trimmed to less than 1 percent. A school district levy increase of 5.8 percent is expected to have the most ramifications for local taxpayers.

"This is not a pleasant day," said School Board Chairman Greg Filice. "I don't like proposing an unpopular property tax increase. I don't like being out of synch with other jurisdictions."

The St. Paul School Board's support of a 5.8 percent levy increase troubled city and county officials. Casting the two votes against the 2.7 percent overall levy increase were Mayor Norm Coleman and Ramsey County Commissioner Warren Schaber. In light of county and city efforts to hold down spending, Schaber called the school district's proposed levy "somewhat shocking."

"The reality is that we're at our taxable limit in St. Paul, regardless of need ... we are at a property tax crisis in St. Paul,"

Taxes to 13

'Turn off the violence'

By Julie Lehr

Volunteers will go door to door on Saturday, Oct. 22, aiming to deliver a packet of information to each of the 2,057 households in Falcon Heights. The message? "Turn Off the Violence."

In St. Anthony Park, adults and children are invited to Langford Park on Thursday, Oct. 27, from 6:30 to 8:30 p.m., to hear speakers arranged by Katie Utke, crime prevention coordinator for the St. Anthony Park Community Council. The speakers' message? "Turn Off

the Violence."

Turn Off the Violence is not only a message; it is also a coalition—sponsored by more than 85 organizations and hundreds of individuals—that has launched a statewide public awareness campaign about violence and ways people can recognize and reduce violence in their lives. The campaign aims at changing, through awareness and education, the societal attitudes that foster violence.

"The idea is to turn off

Violence to 9



Photo by Truman Olson

Residents of Como Park's District 10 pitched in to clean up their neighborhood on Saturday, September 17. The 8th annual cleanup was held at a State Fairgrounds parking lot at Hoyt and Snelling Avenues. Funds for neighborhood cleanups are appropriated by the St. Paul City Council to the city's citizen participation districts, who organize the events.

St. Anthony Park Community Council News

Council actions at a glance

At its September 7 meeting, the Council:

- Held a discussion on the applications for on- and off-sale liquor licenses at L'Europa delicatessen. Full discussion of this question was held over until the next Community Council meeting, which will be held at 7 p.m. on Oct. 12 at the St. Anthony Park Library.
- Moved to recommend approval of the liquor license application for the Campus Sports Grill and Goldie's Nightclub.
- Moved to write to the City Council to recommend approval of no entertainment license for the Campus Sports Grill and Goldie's Nightclub. This action was reconsidered by the Executive Committee after notification by the business owners that the application for a Class 4 license was being withdrawn in favor of a Class 3 License, and that this action was specifically in response to the community input they heard at the Community Council committee meeting. The owners are to be commended for their responsiveness and their willingness to work with the community.
- Moved to cooperate with the South Lake Como Area Block Club to address the problem of railroad noise.

Turn off the violence

Thursday, October 27 from 6:30 to 8:30 p.m. at Langford Park Recreation Center, there will be programs for both adults and children. Ann Foster, Licensed Independent Clinical Social Worker and "good listener to the story each child has to tell," will interact with children at their age level to teach them how to recognize and resolve violent behavior.

Adult programming will include these presentations:

- The St. Paul Police Research Unit will present information and statistics about violence and crime trends in St. Anthony Park.
- John Grayson will share his knowledge of the Family Court in Ramsey County, the legal system and domestic abuse, and violence in the context of the media.
- Jim Levin, director of the Dispute Resolution Center, will discuss the mediation process and how to use it as an option in peacefully resolving neighborhood conflicts.

Please call the Community Council office (292-7884) to reserve your place in this evening of peace building.

Neighborhood cleanup was a great success

Thanks to all the volunteers who made the cleanup even better than in previous years!

Thanks to Bruegger's Bagels and Parkview Cafe for box lunches for volunteers, and to SuperAmerica for pop and cookies.

Thanks to the St. Anthony Park Association for help in recruiting volunteers, and a special thanks to Mark Hansen and the Scouts of Troop 17 who picked up everything from brush to hot water heaters from over 20 senior citizens.

This year the usable furniture and household goods were collected by volunteers from St. Matthew's Episcopal Church for distribution to families in need. Bicycles were collected by a private party who refurbishes them for distribution through the Boys and Girls Clubs.



Food pickup with recycling on Oct. 12

Food for the Merriam Park Food Shelf will be collected curbside with your recycling on Wed., Oct. 12. You can put your canned or boxed food and paper products in a bag or box. Please tape it shut and mark it FOOD SHELF. Volunteers from the Community Council will collect the food from the recycler and transport it to the food shelf at 2000 St. Anthony Ave. If you would like more information about the food shelf, call Roberta Reberts at 645-0349. Eligibility is determined on a case-by-case basis.

Council-sponsored meetings are listed each month in the *Bugle* Community Calendar (see page 17).

Everyone is welcome!

Office: 890 Cromwell, St. Paul, MN 55114

292-7884

Community Organizer: Abby Struck

Members: Bob Amdorfer, Wayne Barstad, Tim Bartz, Kerstin Beyer, Andy Boss, Carolyn Davis, Richard Klimala, Nowell Leitzke, Alice Magnuson, Carole Mannheim, Jack McCann, Howard Ostrem, B. Warner Shippee, David Skilbred, Jim Snoxell and Ellen Watters.

This space paid for by the St. Anthony Park Community Council

Compromise reached on nightclub's entertainment license application

By Kristin Cooper

Facing neighborhood opposition to their request for a class 4 entertainment license, the owners of Goldie's, a new nightclub adjacent to the Campus Sports Grill, 2554 Como Ave., decided to apply for a class 3 license instead. The compromise by Frank Gruler and Martin Bertzyk, who own the space formerly occupied by Gatsby's, inspired a compromise on the part of the St. Anthony Park Community Council in return.

The class 3 license was recommended by the council's Physical Planning Committee, which met jointly Sept. 1 with the Housing and Human Services Committee to consider both the entertainment license for the nightclub and a liquor license for the grill.

As reported to the full council at its Sept. 7 meeting by committee chair Ellen Watters, there was a "great deal of discussion on the class 4 license request and little discussion on the liquor license."

The amount of clothing worn in connection with the entertainment provided is regulated by the various classes of licenses. Class 3, which requires street clothes, permits miniskirts, whereas class 4 allows bikinis, St. Paul licensing official Kris Van Horn said. She said the city code specifically outlines the clothing that is allowed under the different licenses.

Goldie's owners said the class 4 license was originally requested to cater to the 21- to 35-year-old clientele they hope to attract to the nightclub.

Bertzyk said college kids are

attracted by clubs featuring pajama parties, toga parties and beach parties. These events require a special entertainment license because the patrons are not in street clothing.

Other bars in St. Paul with class 4 entertainment licenses include the Manor, Payne Reliever and Lamplighter, Van Horn said. She said strip bars are not allowed in St. Paul because of zoning regulations. Existing strip bars came into the city before zoning codes were set up.

Bertzyk said he would not do anything objectionable at the nightclub because it would be bad for business. "I don't want it to hurt my sports bar," he said.

However, the success of the nightclub is vital to the owners' success because, while the sports grill is doing well, it does not generate enough income to cover expenses for both facilities, Bertzyk said.

"A class 3 restricts me to the point where I can't do what I have to do for the 21- to 35-year-olds." The biggest competition for his business is Tropics, Bertzyk said, and their employees wear bikinis.

Licensing's Van Horn said the department would recommend approval of the license request. She said the department had no legal reason to deny the license and that the owners, both of whom have many years of food service experience, have records of compliance with city regulations.

After an initial vote on a class 4 license failed, the Physical Planning Committee voted to recommend approval of a class

3 license. However, after discussion at the full council meeting, members voted to recommend rejection of any entertainment license application for the businesses.

Influencing the discussion were statements by area residents, who came to the meeting to discuss proposed liquor licenses at Milton Square (see story, page 1), but who stayed for the discussion on Goldie's.

"Gatsby's really affected the quality of our community," said William Glew, a Como Avenue resident. "Let's oppose this whole thing from the very beginning."

That's essentially what the council decided for the entertainment license, while voting to recommend approval of the liquor license.

About a week later, the council's Executive Committee reconsidered after learning that Gruler and Bertzyk, who did not attend the full council meeting, were changing their application to a class 3 entertainment license.

"We told Kris [Van Horn] we were withdrawing the class 4 license request," Gruler told the *Bugle*. "We want to get along with the community," he said. "We thought it was in everyone's best interest to change the request."

The Executive Committee voted to recommend the class 3 license. The City Council was scheduled to decide the issue on Sept. 28, after the *Bugle* went to print.

Beta of Clovia

BAZAAR



Friday, October 21 10:00 - 7:00
Saturday, October 22 10:00 - 1:00

NO ADMISSION!!!

North Star Ballroom, 2nd Floor, St. Paul Student Center
U of M - St. Paul Campus
Parking in State Fairgrounds • Free shuttle bus Friday
Campus parking Saturday

Featuring specialty foods, holiday items,
nature crafts, tot shop, imports, rag
rugs, drawing for a traditional
designed quilt, and much,
much, more!



Fundraising for Clovia sorority providing cooperative housing for university women.

St. Anthony Park United Methodist Country Festival

Sat., Oct. 29, 9:30-7:30
lunch & dinner served
child care available

children's fun time • country kitchen •
farmers market • indoor garage sale •
antiques/boutique • collectibles • leisure center

2200 Hillside at Como
646-4859

Tim Abrahamson Construction



Fine
Carpentry
General
Contractor
Lic #9174
645-9775

CONSTRUCTION CLEAN-UP

MARK PAUL
645-3654

REASONABLE RATES

People

Robert C. Hahnen Sr. of St. Anthony Park received the highest award presented by Pi Kappa Alpha International Fraternity at its August convention in Florida. He was inducted into the Order of West Range. Hahnen had been a district president and national officer of the fraternity, as well as a member for 70 years.

St. Anthony Park resident **Genny Blackwell**, an assistant store manager at Target in Edina, is serving as a loaned executive for the 1994 United Way of Minneapolis Area fund-raising effort. She and other volunteers are loaned by their respective organizations to work full-time for the United Way campaign.

Several local residents have graduated recently from the University of St. Thomas. The graduates and their degrees are: From St. Anthony Park: **Mary Brock**, Doctor of Psychology; **Deborah Campbell**, M.A.; **Erik Sjowall**, B.A.; from Como Park: **Pamela Burdick**, B.A.; **Charles Hozza**, B.A.; **DeAnn LaValle**, M.B.A.; **Mark Richards**, M.B.A.; and from Falcon Heights: **Savanna Borne**, M.A.; **Anthony Schaps**, Master of International Management.

Two students from St. Anthony Park, **Jacob Dorer**, son of Michael and Rose Dorer, and **Kevin Dragseth**, son of Harold and Pamela Dragseth, were

named to the dean's list at Gustavus Adolphus College.

St. Anthony Park's **Karen Nelson Hoyle**, curator of the Kerlan collection of children's literature at the University of Minnesota, has published a biography of Minnesota author Wanda Gág. It is the first book-length study to assess the contribution to children's literature made by this respected artist of the pre-World War II era. In addition to providing a detailed history and assessment of Gág's life and literary work, Hoyle's study offers a look at the world of children's book publishing in New York City from the 1920s to the 1940s.

Rabbi Esther Adler-Rephan has been hired as the new chaplain for Shalom Home East on Midway Parkway. Her role will include education outreach and religious services.

"I am here to listen to [residents'] questions and fears, their joys and sorrows, their stories and their hopes," she said. "I am here to help people express their praise and thanksgiving, as well as their confusion, pain or anger. Though I may not be able to answer, I offer a safe place to question. Though I cannot offer cures, I offer comfort."

The rabbi is "teacher and student of Torah, spiritual guide and professional mensch," Adler-Rephan said.

Her schedule at Shalom East will be Wednesday mornings and Tuesday and Thursday late afternoons.

The Children's Defense Fund-Minnesota has given **State Sen. Ellen Anderson** (DFL-St. Paul) a perfect score for her voting record on issues crucial to the well-being of children for the second consecutive year. She was one of 15 senators to be given the perfect score for the 1994 legislative session.

Anderson recently was appointed to a newly-created legislative task force charged with studying Minnesota's future electricity needs. The 16-member task force was included in the 1994 law that will allow NSP to store spent nuclear fuel in dry casks at its Prairie Island plant near Red Wing. Anderson pointed out that she was opposed to this storage, but added that "this task force must go beyond that issue and examine the state's needs for electrical energy into the future."

Anderson also was appointed to the board of directors of Minnesota Project Innovation, a private, nonprofit organization that assists in the successful formation and growth of Minnesota's small businesses.

Faye Passow of Carter Ave. Frame Shop has been awarded the title of Certified Picture Framer (CPF) by the Professional Picture Framers Association. She was one of 19 successful candidates among 38 who took the exam. Passow has been a framer for 13 years and is also an artist specializing in lithography.

Todd Grossmann, D.D.S.

644-3685

Paul Kirkegaard, D.D.S.

644-9216

2278 Como Ave.

Your neighbors in St. Anthony Park



7th Annual

Octoberfest

Scottish Flair at Milton Square
Saturday, October 1, 10 a.m.- 5p.m.
Carter at Como and Library Lawn



Free carriage rides, treasure hunt, popcorn, treats, face painting, pumpkins, balloons.
Fresh fruits and vegetables from Bob's Produce Ranch, Historical Tartan Clan.
Grand Opening of Gustafson Jewelers and Welcome Day for Taste of Scandinavia Bakery and L'Europa Deli.
Sponsored by Milton Square Complex.
For more information call: Mary Ann Milton: 644-5113, Paul Kirkegaard: 644-9216, Norton: 341-3333, Mary: 646-5506 or Suzanne Fantle: 645-6774

What Do All Of These Businesses Have In Common? They Are All Members Of The St. Anthony Park Business Association

Steven & Cynthia Ahlgren, Attorneys
All Seasons Cleaners
Bane, Holtzclaw & Company
The Bibelot Shop
Robert Bjorndahl, D.D.S.
Boomerangs
Bruegger's Bagel Bakery
Carter Ave. Frame Shop
Children's Home Society of MN
Como Chiropractic Clinic
Country Peddler
Courtyard Antiques
Dr. James Dodds, D.D.S.
Emil Gustafson Jewelers
Flowers by Jane
Goodwill/Easter Seals
Group Health Como Clinic

Hermes Floral Company
K.C. Busch & Associates Architects
Dr. Paul Kirkegaard, D.D.S.
Krivit Photography
Mark Labine, Attorney
Landscape Research
Liz J. Design, Inc.
Luther Seminary
Lutheran Social Services
M. Mariano & Co. for Hair
Manning's in the Park
Bobbi Megard, St. Paul City Council Member
Meyer Human Resources
Micawber's Bookstore
Michels/Architecture
Miller Pharmacy

Milton Investment Company
The Movie Shelf
Muffuletta
Music in the Park Series
Nelson Financial Services
Northern Clay Center
Omega Travel
Park Bugle
Park Development Associates
Park Hardware Hank
River City Mental Health Clinic
Kenneth G. Schivone, Attorney
Seraphim Communications, Inc.
Speedy Market
St. Anthony Associates
St. Anthony Park Association
St. Anthony Park Block Nurse Program

St. Anthony Park Community Council
St. Anthony Park Clinic
St. Anthony Park Home
St. Anthony Park Library
St. Anthony Park State Bank
Stanton Publication Services
State Farm Insurance
The Transformed Tree
Twin City Linnea Home
The Update Company
Unique Designs
Warren Hanson Organization (WHO?)
Wellington Management, Inc.
Julian J. Zweber, Attorney



You too can join this group of businesses, residents, home-based businesses, retailers, and others who are working to promote, maintain and enhance the business, professional and residential community in St. Anthony Park. We work together to ensure a strong, healthy business environment, and we need your help.

Join us today and you'll be a member for the rest of 1994 and all of 1995. Plus, new members pay only 75% of their appropriate dues level. For more information on becoming a member or to find out more about the programs of the St. Anthony Park Business Association, call 645-2366.

Editorial

Give bar a chance

Gatsby's really is gone.

Never has that been more obvious than in the past few weeks when the owners of the Campus Sports Grill, which opened in June in the Gatsby's space, applied for an entertainment license for their new nightclub, Goldie's. The owners, Frank Gruler and Martin Bertzyk, wanted a class 4 license. Appearing before the Physical Planning Committee of the St. Anthony Park Community Council, they explained that they want to compete for the college crowd by having beach parties and toga parties. In St. Paul, you need a class 4 license for any entertainment that features something other than street clothes.

The committee—and the community—couldn't go along with the request. That's because class 4 permits other, more scanty apparel as well (hint: G-strings and pasties). And, area residents asked, once an establishment has a class 4 license, what legally binds a nightclub to oral promises of beach and toga parties only?

Facing neighborhood opposition, Gruler and Bertzyk reconsidered. As the *Bugle* went to press, they were in the process of changing their request to a class 3 entertainment license, the one recommended by the Physical Planning Committee. Their compromise is all the more stunning when considering that the city's licensing department was recommending approval of the class 4 license.

Gruler and Bertzyk have many years of experience in the food service business, and their record of compliance with city regulations is good. That's why the licensing department was prepared to recommend approval. You need legal reasons for denying an application. The change in request, therefore, was solely in response to neighborhood objections.

"We want to get along with the community. We need the support of the community," Gruler said.

So the olive branch has been extended by the bar owners. We say it's time for the neighborhood to do the same. It's time to recognize that Gatsby's, indeed, is gone. In its place is a new grill and nightclub with new owners. Until they prove they are unworthy of the neighborhood's trust, we need to give them and their business a chance.

Next issue	October 27
Display ad deadline	October 13
News & classifieds deadline	October 17

Park Bugle 2301 Como Ave., Box 8126
St. Paul, MN 55108 646-5369

The *Park Bugle* is published by Park Press, Inc., a non-profit organization guided by an elected board of directors. Currently serving on the board are Elving Anderson, Grace Dyrud, Kent Eklund, Audrey Estebo, Connie Hillesheim, Catherine Holtzclaw, Paul Kirkegaard, Mary Nelsestuen, Joel Schurke, Marietta Spencer, Paul Stegmeir, Dale Tennison and Willard Thompson.

The *Bugle* is a community newspaper serving St. Anthony Park, Lauderdale, Falcon Heights and Northwest Como Park. The *Bugle* reports and analyzes community news and promotes the exchange of ideas and opinions in these communities. The *Bugle* strives to promote freedom of expression, enhance the quality of life in the readership communities and encourage community participation.

The *Bugle* is published the last Thursday of each month. It is mailed free to residents of St. Paul's District 12, part of St. Paul's District 10, Falcon Heights and Lauderdale and distributed through local businesses.

Subscription rates are \$8 per year, \$4 for senior citizens.

Editor: Julie Lehr, 646-5369

Business Manager: Wendy Hanson, 636-2867

Advertising Representative for St. Anthony Park, Falcon Heights & Lauderdale: Kathy Magnuson, 645-2475

Advertising Representative for Como Park and all other areas: Rachel Larson, 644-5188

Production: Kathy Malchow



Opinions expressed in the *Bugle* by the editor, columnists and contributors do not necessarily represent the opinions of the Board of Directors, Park Press, Inc.

Copyright©1994 Park Press, Inc., St. Paul, Minnesota. All rights reserved.

Letters

A boon to the business community

Dear editor,

One of the many things that make St. Anthony Park such a special neighborhood in which to live and work is the distinctive, vibrant retail business district at Como and Carter. This fall, our community has a wonderful opportunity to build on this important part of our neighborhood as we welcome the Taste of Scandinavia Bakery and Catering and L'Europa gourmet deli. Both businesses promise to be great assets to our neighborhood and will help strengthen our business district and enhance our quality of life.

St. Anthony Park is extremely fortunate that these two fine businesses have decided to locate in our midst. Several other neighborhoods wanted

the bakery and deli to open at their locations, but our community offered a unique combination of customers, space and ambiance that the owners couldn't pass up.

Soile Anderson, owner of Taste of Scandinavia and former owner of The Deco restaurant, has been serving extraordinary food to people in the Twin Cities for more than ten years. Dr. Marcos Herrera, owner of L'Europa, is a well-known radiologist. Together, they are making a major investment in St. Anthony Park through their decision to open a much-needed bakery and deli here and through their extensive remodeling at Milton Square.

The St. Anthony Park Business Association is especially pleased and excited about these developments because the bakery and deli will draw customers from throughout the Twin Cities to shop, eat and visit in the neigh-

borhood. This type of activity helps all of our businesses, especially retailers such as The Bibelot, Gustafson Jewelers, Micawber's, Miller Pharmacy, Park Hardware and all the others whose presence helps make St. Anthony Park one of the best neighborhoods in St. Paul.

We invite everyone in St. Anthony Park to help Soile Anderson and Marcos Herrera feel welcome, and thank them for choosing our neighborhood!

The Board of the St. Anthony Park Business Association

Just the facts, ma'am

Dear neighbors,

I am writing to address the confusion that seems to surround the liquor license application for the new deli/bakery in Milton Square. I have heard

numerous different statements regarding this issue and have even seen handbills that have been circulated.

The problem is that while claiming to be "fact," many of these statements contradict each other. Obviously, they cannot all be true. However, some individuals have taken this incomplete and contradictory information and used it to make decisions, maybe prematurely.

I urge you to get complete and accurate information prior to making your decision about this neighborhood issue. The St. Anthony Park Community Council meeting on Wed., Oct. 12, at 7 p.m., in the basement of the St. Anthony Park Branch Library, will provide a forum for exchange of information.

Chris Brown Mahoney
St. Anthony Park

Thanks, readers! As of the middle of September, you have responded generously to the *Bugle* fund drive. We have received approximately \$7,000 so far. Here is a partial list of contributors. More names will be printed next month.

Nancy Adair & Al Uhl
Bill & Mary Jane Addison
Alfred & Dorothee Aeppli
Elmer Andersen
Tony Andersen
Genevieve Anderson
Astrid Anderson
Joel & Teresa Anderson
Frederick Arny
Deane Arny
Ted & Patricia Baden
Egolfs Bakuzis
Mary Barwise
Donald & Mildred Bates
Fred Battell
Gary & Ase Bauman
Luella Bean
Cheryl Becker
Rick & Mary Ann Beeson
Mary J. Benson
Mr. & Mrs. Earl Bergerud
Howard & Jane Bergstrom
Harriet Bestul
Signet Betsinger
Margarita Billings
Robert Bjorndahl
J.M. Blair
Betty & Roger Blakely
John & Frieda Boeke
Vernon & Frieda Bohlman
Richard Bolger
R. R. Bowe
Robert & Annetta Boyd
Mel & Beth Boynton
Paul & Carletta Braun

Mrs. David Briggs
Bro-Tex Inc.
R.H. Brokopp
Pat Brown
Jeff & Linda Budd
Bob & Donna Bulger
Bill & Ann Bulger
J.T. Bull
Linda Camp
Dale & Carolyn Canfield
Marjorie Carlson
Cecil & Margaret Chally
Clarke & Florence Chambers
Don Brown
Boyd & Ruth Cheney
A.M. Cherry
Mrs. A.H. Christensen
Art & Gwen Christiansen
Janet Christianson
Mr. & Mrs. Edwin T. Clocker
Mr & Mrs. Winston Close
David & Susan Cobin
Bryce & Ruth Crawford
Bob & Carol Cross
Valerie Cunningham
Agnes Curley
Maree & Wayne Davies
Marcella Diffendorfer
Grace Dyrud
John Eaton & Audrey Estebo
Robert & Marian Ed
Carl Eide
Kent & Katherine Eklund
Marilyn & Quentin Elliott
Glen Enos

Judy Erickson
Frances E. Erickson
Gertrude Esteros
Loretta & Brian Etienne
Victor Etienne
Sara M. Evans
James Fish
Frank Forbes
Floyd & Joanna Foslien
George & Phyllis Freier
Audrey & Dave French
Dan & Virginia Frenzel
Ivern Frost
Elaine & Gale Frost
Nancy Fruen
Lisl Gaal
Frederick Gaiser
Eric Galatz
Donna Gallagher
Mary & Dan Garvin
Ray & Gay Geist
General Foam of Minnesota
Daryl & Mary Gerke
Robert Gille
Evelyn & Neal Gish
Lois Glaeser
Warren & Ki Ki Gore
Robert Granovsky,
Bomar Antiques
Stuart Gulsvig
Val Gyurci
Ruth Hadiaris
E.J. Hagen
Theda Hagenah
Robert & Betty Hahnen
Raymond Halley
John & Theora Halstead
John H. Halstead, Jr.
Libbie Hammel
Agnes Hanson
Elsie Hanson
Wayne & Estelle Hanson
Dr & Mrs. W.L. Hartwick
Beulah Hebbel
Marlin & Opal Hedberg
James Heilman
Vi & Judge Hella
Joan Hershbell & Gary Johnson
Linda & Larry Holmberg
The Homdroms
Home Tailors
Ralph & Dorothy Hopp
Florence & Jean Hoska
James & Margaret Houck
John & Frances Hunt
Mr & Mrs. W.S. Hutchinson

Sally Jannette
Geraldine Jenkins
Vance & Ruth Jewson
Clinton Johnson
James Johnson
Joan Jones
June Bakke-Joseph
Joanne & David Karvonen
William & Katharine
Kavanaugh
William & Violet Kehr
T.E. Kellogg
Norman & Sylvia Kerr
John & Anne Kersey
Robert J. Kohnen
Curtis & Ruth Krook
Mary Lambert
James & Sarah Larson
Dean & Ardelle Larson
Daniel & Gaye Larson
Meg Layese
David & Elizabeth Lee
Charlie & Laura Leir
Nowell & Julia Leitzke
Bill, Mary & Harriet Lerman
John & Patricia Lindkvist
Mrs. B.G. Lingk
Karen Linnell
Betty Lockhart
Dorothy Lofberg
Wallace Loucks
Yvonne Lueck
C.A. Lukas
Jeanne Lupton
Carol & William Madden
Jim Maddock & N. Larson
Mary Mantis
Lois Marrinan
Stewart & Jeanne Marshall
Amy Marshall
Paul & Ida Martinson
John & Dorothy Marvin
S. Elizabeth McBride
Mr. & Mrs. E.W. McDiarmid
Richard & Rosemary McHugh
Susan McIntyre
Charles & Mary Kay McJilton
Gerald & Mary McKay
Gary & Lynn McLean
McNamara Sales Co.
Edward Meehan
D.J. Merrell
Jack & Joanne Meyer
Verna Mikesh

Continued on next page

Meet *your* newspaper staff and board!

Had your fill of "Your News" claims on local TV?

We really deliver it!

The *Park Bugle* is *your* newspaper—owned by the communities it serves. Stop by to meet the staff and board at the annual meeting and board of directors election for Park Press, Inc. on Sun., Oct. 16, from 3 to 5 p.m., at the St. Anthony Park Branch Library Community Room, 2245 Como Ave.

He Said, She Said, or: Venus and Mars are Alright Tonight

By Gregg Richardson

My wife had lunch with her friend the other day. As usual, they apparently spent much of their time discussing their husbands.

"Jack's just like you," she said breezily, "he thinks he has friends, but he really doesn't."

She meant, of course, that like other males, I am biologically incapable of having profoundly intimate relationships. I rather indignantly responded that just a year or two ago, I had a friend confide in me that he was thinking of changing jobs.

Recently, whenever I am not engaged in caricatures of "he said, she said" conversations, I have been trying to think hard about what it means to "be" male or female. It's been twelve years since Carol Gilligan's book *In a Different Voice* first popularized the idea that men and women communicate differently, indeed hold entirely different sets of values, because they are essentially raised in separate subcultures. This idea, along with Mary Belenky's contention that women and men actually have different ways of "knowing," has spread rather subtly into our cultural consciousness, because, on at least a simplistic level, they seem to make a lot of sense.

The inhabitants of the popular culture have for many

years been ducking salvos in what James Thurber called "the war between men and women." In the past, both moralists and humorists (exclusively male) got a lot of mileage out of the ridicule of women's inherently deficient modes of communication and logic. Now it seems, the worm has turned, and men are increasingly the objects of pity and ridicule for being inarticulate, emotional cripples. But who exactly are these pathetic men and women?

I have followed two predominantly female professions in my life, social work and librarianship, and in fourteen years of work, I've had shockingly little trouble "communicating" with women. In fact, most of the difficulties I have had have arisen in response to women who were communicating in ways supposedly characteristic of men.

On the other hand, although for many years I've faithfully accepted the dogma that women are the more "nurturing" gender, it didn't occur to me until fairly recently that I'd never actually met a "nurturing" woman. I've certainly met many fine women in my life, with many admirable qualities, but not one I can think of for whom the word "nurturing" comes primarily to mind. In fact, the only really nurturing person I've ever met was a male campus minister I knew in college twenty years ago.

I have little doubt that many of the characteristics described by the "difference feminists" have some sort of statistical validity in the (American?) population as a whole, but unfortunately most people don't seem to think statistically. They think instead in stereotypes, as they've been trained to do from infancy. This is, on the one hand, confusing to children and adolescents, who are likely to have the same vaguely uneasy sense I had that something is wrong with their social perception, because so many people, including themselves, don't

seem to behave the way they are "supposed" to. On the other hand, it's easy and fun for adults to gender-label one another's annoying habits, certainly more satisfying than recognizing and coping with individual psychological complexity.

But more disturbing to me than the stereotypical thinking is the implicit narcissism of this outlook. Although, again, I don't hold Gilligan & Co. responsible for this popular oversimplification, the message I seem to frequently receive from friends, professionals and the media is that the deepest, most important and meaningful side of oneself that can be shared in an intimate relationship, indeed the defining quality of such a relationship, is emotional. And women, as has been conclusively proven by many *Ladies' Home Journal* articles, are more highly emotionally developed than men. Since it seems almost superfluous for me to use newspaper space to defend the importance of emotional well-being in a society so fiercely devoted to feeling good about itself, let me move right on to suggest that there may be other equally substantial bases for a satisfying friendship.

Friendship, in its essence, is founded upon what is most important to a person. For some people, many of them women, that may be feeling. For others (many of them women as well as men) it may be ideas; for still others, it could be aesthetic experience. As a purely hypothetical situation, is it just possible that Jack and I may develop a truly deep and rewarding friendship, based on a shared interest in social and philosophical ideas, without ever discussing how often he has sex, or sharing the details of my most recent argument with my wife?

For that matter, what if our friendship never runs any deeper than a weekly game of handball? Perhaps I'm just being callow, but I'm not fully convinced that a shared love of handball is necessarily a less profound life experience than a shared frustration over who takes out the trash. Remember, male or female, we're talking about Americans here. I'm skeptical that the daily emotional experience of most American women runs a whole lot deeper than their husbands' heartfelt devotion to the Vikings or the Redskins.

Perhaps I'm too pessimistic. Perhaps we can take the insights of Gilligan and Belenky into account without using them as blunt objects on one another.

But if you run into me at the post office, please don't ask me about my marriage. It's, uh, it's fine, just fine. Now, how about those Vikings?

Barbara Miller
Elisabeth Miller
William & Fern Miller
Philip & Henrietta Miller
Greg Mitton
Minn. Wire & Cable Co
Betty & Fred Morlock
Elizabeth Murphy
Charlotte Murray
Gordon & Christy Myers
Theodore & Margaret Naebers
Richard Nagler
Paul & Genevieve Nakanishi
Charles Nauen & P.J. Pofahl
Alyce Neetzel
Herb & Val Nelson
Walter Nelson
Frank L. Newman
Mr. & Mrs. Karl Nitsch
Marie Nodland
Mark Nolan
Carabelle O'Connell
Mike & Marcie O'Connor
Drs. Terrance & Barbara O'Leary
Paul & Dorothea Ofstedal
Alide Ogrins
Denny & Paula Olander
Helen Olsen
Denny & Nancy Olsen
Ken & Lucy Olson
Wade Olson
Janet Otis
Robert & Alice Ott
Alfred & Edna Pankonin
St. Anthony Park Barber Stylists
Harry Paulbitske
Branch & Elna Paulson
Marie Pekarek
Terry Peltzer, Innovators
Edgar & Lois Persons
Richard Peryam
Eunice Peterson
Pansy Peterson
Esther Peterson
Mike & Beth Peterson
Donald Peterson
Joey & Ruth Peterson
La Donna Peterson
Gregory & Emily Peterson
Garry & Mary Ann Peterson
Terry Pfaff
H.O. & Georgette Pfannkuch

Mike & Alice Phillips
Elaine & Dick Phillips
Eileen & Patrick Pinto
Mae Polson
LeRoy & Janet Quale
Paul & Betty Quie
Mrs R.D. Rasey
Igor & Agnes Razskazoff
George & Dadee Reilly
Mrs. H.W. Remington
Maynard & Donna Reynolds
Laura Mae Rice
Garnet Rice
Janis Robins
Robert Robinson
William & Maxine Rogers
Tom & Jo Anne Rohricht
Lena Wolf Rothman
Sigrid K. Rothman
Janis & Don Ruddick
Paul & Frances Rudolf
Orlando & Gloria Ruschmeyer
Vernon & Marilyn Ruttan
Louis Safer
Walter Sandgren
L.L. Sandquist
Elizabeth Satre
Paul & Aria Savage
Steven & Coral Saxe
John & Joyce Schafer
Gretchen Schampel
Mae Schmidt
Dick & Carol Schoen
Janie & Steve Schomburg
Jon Schumacher & Mary Briggs
Hal & Kay Seppala
John Seppala
William G. Shepherd
Tai Shigaki
Phil & Barbara Shively
Robert & Gladys Shoffner
Robert & Jessie Shoffner
Steven & Diane Singer
Joe & Elvera Skovholt
Michael Sladek
Ingebor Husby Smith
Charles & Myrna Smith
James & Ellen Snoxell
Mrs. Walter Sohre
Arlene Spiegel & Gordon Alexander
Mr. & Mrs. E. B. Stanford
Jim & Ruby Starr
Alan & Trish Stefanson
Lynn & Michael Steffes
Bertha Stettner
Marilyn & Bill Stock

Janet Stoeberl
Hazel Stoeckeler
Dave & Sally Stoppel
Olaf & Lila Storaasli
Jim & Ann Stout
John & Mary Strait
Carl Strand
Eric Stull
Robert & Marion Stumm
Gordon & Dorothy Swanson
Leopold Taar
Ron & Colleen Tabaika
Jeanne & Steve Tanamachi
Tectone Construction
Denise Tennen
Dale Tennison
Robert Thayer & Nancy Meade-Thayer
Roxanna Freese, The Bibelot Shops
Mr. & Mrs. Willard L. Thompson
Lois Thorstenson
Mr. & Mrs. A.L. Thurow
The Tressel Family
Richard Tretsven
James & Carol Unger
Michael & Marion Uram
J. T. & Lorraine Utne
Helen Verbrugge
Mr. & Mrs. P. C. Verbrugghen
Mrs. H.J. Vikingstad
John & Andrea Wagenaar
Timothy & Gretchen Walker
David & Bonnie Walkins
Hallie Wannamaker
Mary & John Ward
Susan & Robert Warde
David Wark
Willis & Cornelia Warkentien
Marion Watson
Dennis & Alicemay Watson
Ralph & Verna Wayne
Alvin & Eleanor Weber
Joanne & Vernon Weckwerth
Steve & Kathy Wellington
J.C. West
Jean White
Mrs. Raymond Wilke
Worum Chemical Co.
H.E. Wright
Ann & Gary Wynia
Anthony Yapel, Jr.
Carol Zapfel
E.W. & Betty Ziebarth

Thanks for painting!
Park Press's board & staff extend
their appreciation to
Larson Decorating
for painting our new office space in
the Healy Building, 2301 Como.

The
**Parkview
Cafe**

**930 Raymond Avenue
646-8957**

**NOW OPEN
FOR
DINNER!**

**Complimentary single scoop of ice
cream or yogurt with a purchase
from our new dinner menu.**

• *Homestyle daily
lunch specials*

• *Breakfast
served any time*

• *Open M-F
at 5:30 AM*

• *Dinner served
Mon-Fri until 9PM*

October Special:
5:30-11:00 AM
2 eggs & toast
99¢

Speedy market

2310 COMO AT DOSWELL ST. PAUL
OPEN EVERY DAY 7AM - 11PM

RED BARON
**SUNRISE
SINGLES**



\$1 89

11 OZ.
ASST.
VARIETIES

HOT BEN & JERRY'S
ICE CREAM

\$2 99

QUART

PRICE

JENO
PIZZA ROLLS

\$1 29

CORTLAND OR
MCINTOSH APPLES

99¢

3 LB BAG

PEELED BABY
CARROTS

89¢

16 OZ BAG

TIM'S HOMEMADE
**BEER
BRATS**

\$1 39

LB

GERMAN
**POTATO
SALAD**

99¢

LB

CUSTOM BAKERY
**NASTY
BREAD**

(A DOUBLE SOURDOUGH)

\$1 99

1 1/2 LB

WE HAVE CANDY AND CARDS FOR HALLOWEEN OCTOBER 31

Prices good through
Sunday
October 9, 1994

645-7360

We reserve the right to
limit quantities.

O'Rourke elected chair of District 10 Council

District 10 Como Community Council held elections for seven council positions at its annual meeting on Sept. 20. Dennis O'Rourke, a nine-year resident of Midway Parkway and veteran council member, is the newly-elected chair. He advocates increased community participation in District 10 activities.

"I am interested in maintaining and improving our neighborhood and fostering broad participation in our district council," O'Rourke said.

Outgoing chair Tom Montgomery, who has been on the council for the last six years and chair since 1992, was recently elected president of the Hamline University School of Law's Student Bar Association and decided against running for chair again.

Other election winners are: Victoria FritzKapps—secretary Mike Thibault—sub-district 1 Sherri Knuth—sub-district 2 Robin Lenarz—sub-district 3 Terry Daniels—at-large Kevin O'Leary—at-large Almost 40 residents of District 10 attended the meeting.

State Sen. Ellen Anderson, the

keynote speaker, told the group how they could make a difference in their communities. Using the recent legislative battle that St. Anthony Park residents waged and won to get the Minnesota Department of Transportation to erect sound barriers along Hwy. 280, Anderson explained that the power really is with the people. She said because the residents demonstrated their need and commitment to the community, they were able to persuade Gov. Arne Carlson to sign the order to erect the barriers. Construction will begin next year.

Other local political faces in the crowd included St. Paul City Council Members Roberta Megard and Janice Rettman.

The next community council meeting will be held at Como Park Lutheran Church on Tues., Oct. 18 at 7 p.m., and will feature Parks Superintendent Robert Piram. He will talk about long-term improvements in Como Park, including parking issues, a new picnic pavilion and the Como Educational Center.

Call Julie Hoff, community organizer, at 644-3889, for additional information.

Boss appointed to Port Authority

W. Andrew Boss, president of St. Anthony Park State Bank, has been appointed to the St. Paul Port Authority Board of Commissioners by Mayor Norm Coleman. Boss' appointment, effective immediately, was officially announced September 20 along with the reappointment of Howard W. Guthmann, a certified public accountant who currently serves as chair of the Port Authority Board.

"St. Paul is moving forward in a dynamic and vibrant way. I am pleased to announce the appointment of these two highly-respected and qualified candidates to serve on the Port Authority Board," Coleman said. "Both candidates have the financial and business expertise necessary to this board's operation and both have devoted themselves to the City of St. Paul."

Boss has over 35 years of experience in commercial banking, with banks in Chicago, Minneapolis and St. Paul. He is a member of the Midway Cham-



Andy Boss

ber of Commerce, the St. Anthony Park Community Council and the St. Anthony Park Business Association. He also serves as a trustee for the Friends of the St. Paul Public Library.

Meeting with members of the St. Anthony Park Business Association on Sept. 12, Coleman shared the news that he soon would be appointing Boss to the Port Authority. The announcement was greeted enthusiastically by local business people.

QUALITY CARING CRAFTSMANSHIP
With your 'special' desires in mind



Specializing in remodeling
and renovation of older homes

Tectone Construction

Call Ben Quie in the Park at 645-5429

Tectone is Biblical Greek for Carpentry

LICENSED • BONDED • INSURED



Photo by Truman Olson

Changes at Falcon Heights Elementary School include a new kindergarten room, the addition of a staff lounge and gymnasium, and better space for the before-and-after school program, shown above.

Remodeling complete at Falcon Heights Elementary

By Linda Johnson

Students at Falcon Heights Elementary have returned to an extensively remodeled school this fall. Started last September, this \$2.7 million reconstruction project has expanded offices and 10 classrooms, added a staff lounge and gym, created a new kindergarten, and fashioned space for the Friendship Connection before-and-after-school program.

The project was planned two years ago after the Roseville district passed a \$48 million referendum providing for a "facelift of every school building," according to Ellen Blank, principal of Falcon Heights Elementary. A prior appraisal of each building determined the amount allotted in the referendum. Each school received a budget and after money was set aside to redesign buildings to comply with codes, parents, staff and the principal engaged

in "participative decision making," according to Blank, to make recommendations for further improvements.

Blank noted that staff, students and parents will enjoy the benefits of these improvements. The offices now have a design "more conducive to serving public and staff." A new reception area creates more space so that "everyone is not on top of each other."

The staff, according to Blank, "has never had a lounge before." The new staff lounge comes complete with sinks and cupboards.

The classrooms were reconstructed in June so that "no classrooms had to be moved during the [school] year." The children will also have a new gymnasium. (Previously the cafeteria was the gym.) Finally, an old kindergarten room was demolished to make way for a new one in the front of the

school. The added space for the Friendship Connection will also facilitate this before-and-after-school program for children whose parents work.

Disruption of classes during the school year "wasn't too bad," Blank said. From September to mid-April the crew started on the additions outside the building. Only in April did construction begin to disturb routines slightly when staff had to move the office. Disturbance to classroom activity was minimal, however, since expansion of classrooms was postponed to the summer. The only interruption of lessons consisted of "kids hanging out the windows to see the cranes," according to Blank.

The school invited its residential neighbors to an open house in September in appreciation for "a year of listening to jackhammering."



928 Raymond Ave.
St. Paul • 646-6686

Hampden
Park
Co-op

SPECIAL

FOODS FOR
THE
AUTUMN TABLE

EMMENTALER SWISS CHEESE

\$3.99/LB (REG. \$4.99/LB)

ORGANIC APPLES & SQUASH

ON SALE THRU OCTOBER

Open the Door to Service

What I can do for you, as a home buyer:

Help you determine what price you can afford to pay for a home.

Provide up-to-date financing information and help determine the best method for your situation.

Preview all homes that I show so that you get to see the best available, no matter what company they're listed with.

Handle any complications that occur throughout the buying process - before the contract and after the settlement.

Nancy Meeden
Burnet Realty

282-9650 Office
641-1506 Home



MEET AND HEAR THE LOCAL CANDIDATES ON OCTOBER 11

State House



Steve Thibault



Alice Hausman

County Commissioner



Sue Haigh



Susan Kimberly

The candidates for state representative and county commissioner will meet with neighbors and debate the issues at the Tuesday, October 11 dinner of the St. Anthony Park Association. The League of Women Voters will moderate and take written questions from the audience.

New location this year:
St. Anthony Park United Methodist Church, Hillside and Como

Time: 5:45 social hour; 6:15-6:45 dinner served; 7 p.m. program.

Child care is always provided!

Dinner price: \$7 for non-members, \$6 for members, \$5 for children under 12; children 4 and under free. Call Jennifer at 653-6504 for dinner reservations.
Dinner this month is a fundraiser for the St. Anthony Park U.C.C. Nursery School.



St. Anthony Park Association

President: Chris Brown-Mahoney 646-5296
Publicity: Mary Ann Bernard 646-2929

Sharrett's Liquors

645-8629

Call for FAST DELIVERY

Corner of Raymond and University



PARK SERVICE

TIRES • BATTERIES • EXPERT REPAIR
CERTIFIED MECHANICS

The **76** Station in the Park
2277 Como Avenue 644-4775 • 644-1134

Life Transition Workshops

St. Anthony Park United Church of Christ
2129 Commonwealth Avenue

October 15 and November 5

- learn skills to cope with grief and loss
- learn to help others through difficult life passages

For further information and registration details, call
Sharon Cramer 645-9902

GIVE YOUR ACHING BODY A CHANCE!

Call Thatcher Chiropractor Clinic P.A. for an appointment
with Dr. Ingjerd Osthus

PHONE: 646-7575

(Located at the corner of Hamline and Larpenteur Ave.)

"Your neighborhood chiropractor dedicated to excellence"



2413 Doswell Avenue

Beautiful North St. Anthony Park, conveniently located close to both campuses. This spacious twin home offers one level living with over 1,700 square feet, including 2 bedrooms and 2 baths. Priced at \$110,000

Larry Anderson, Edina Realty

426-9961

Edina Realty

SAP Foods will stay open

By Michelle Christianson

"Help Save Your Neighborhood Grocery Store NOW!" These startling words surprised residents of St. Anthony Park in August, alerting them to the possibility that the St. Anthony Park Co-op on Cleveland Avenue might close.

According to former manager Chris Anders, sales at the 25-year-old co-op had been flat or declining for about three years. In the third quarter of this year, a large deficit made it look as though vendors wouldn't be paid. At a meeting on August 7, the board of directors of the co-op recommended closing the store, liquidating all assets and paying off the debts. This course of action was not acceptable to a group of neighbors who asked for two weeks to try to raise money and support so the store would not have to close.

This task force was responsible for distributing leaflets in the neighborhood, calling for donations and, in general, seeking support and involvement in the co-op. As of August 21, \$5,500 had been raised and the decision was made to remain open with a new manager, new staff and a new board of directors.

"It is unfortunate that we had

this cash-flow problem at this time," says manager Sue Corrao. "We were right in the middle of making some much-needed changes at the time, reorganizing and updating inventory, changing signage and making better use of space."

Corrao, who has been at the co-op for one and a half years as night manager, has a vision of the store for the future that she would like to implement. She sees it becoming more "user friendly," bright and welcoming.

"The people who were in charge here before gave so much of themselves; they were just tired out. The new staff has a lot of vitality and enthusiasm for turning things around here."

The community responded to the crisis with an outpouring of generosity, with people stopping in daily to contribute. Nonetheless, in order to stay open, more people need to patronize the store. Corrao encourages newcomers to come in and past patrons to take a new look.

She lists several reasons to shop in a co-op including: there are few lines in which to wait, you will get individual attention, many of the foods sold are organically grown and minimally packaged, dietary and nutritional information is available, and the staff will special-order products for you.

One other factor in the survival of the co-op is membership. There are about 125 members now, about 50 of whom are working members. Those numbers need to double in order for the store to be really successful. (Corrao emphasizes that membership fees go toward capital improvements.) Although neighboring Kinko's and Lori's have been wonderfully supportive, the co-op would welcome more memberships from other local businesses.

"We're trying not to look back, but to look to the future," says Corrao. "We want to remain a part of the community."

Area churches try outreach

By Michelle Christianson

Seven area churches are collaborating in an ecumenical outreach effort—targeting people who live between Highway 36 and University Avenue, and between Highway 280 and Snelling Avenue—the weekend of October 22 and 23.

The churches include: St. Anthony Park Lutheran, St. Anthony Park United

Methodist, St. Anthony Park United Church of Christ, St. Matthew's Episcopal, Corpus Christi Catholic, Peace Lutheran and St. Cecilia's Catholic. All will have representatives going door-to-door.

The purpose of this unique venture is not to proselytize, but to invite people to join their neighbors at one of the area churches. Each visitor will have informational fliers.

Grant Abbott, pastor at St. Matthew's, stresses the churches want to be respectful of those who are already committed or have different religious backgrounds. "We're not trying to convert anyone; [we want] to ask those who haven't been to a neighborhood church, but who may be interested, to give us a try."

The ecumenical nature of this outreach program is unusual. Although the idea to visit everyone originated with Pastor Paul Ofstedal at St. Anthony Park Lutheran, all the churches have agreed to work together and are willing to welcome visitors from any denomination.

GRAND OPENING

OF OUR NEW LOCATION
THURSDAY – SATURDAY
OCTOBER 13 – OCTOBER 15

FREE MAGNETIC FRAME FOR STOPPING IN
DRAWING FOR DOOR PRIZES • REFRESHMENTS

DAILY SPECIALS:

THURSDAY: CHOOSE ANY POSTER FOR FRAMING AND THE POSTER IS FREE

FRIDAY: FRAMED PRINTS OF MINNEAPOLIS, ST. PAUL, ST. ANTHONY PARK, AND THE U OF M – ALL 1/3 OFF

SATURDAY: 20% OFF ALL CUSTOM FRAMING



2186 Como Avenue, 645-7862

Goodmanson Construction



CONCRETE SPECIALISTS

- Basement Waterproofing
- Slabs • Walks
- Patios • Driveways
- Snow Plowing
- Fire Egress Windows

FREE ESTIMATES

*All Work Guaranteed
20 Years in Business*

631-2065

NORTHERN CLAY CENTER

2375 University Ave.
St. Paul, MN 55114
Phone: 642-1735

EXHIBITIONS

"Under the Influence of Women" thru Nov. 4
"Holiday Market" Nov. 18 – Dec. 23

EDUCATION

Many fall workshops for kids and adults still to come. Call for more information.

RETAIL

Open 10-5 M-Sat. and now Thursdays 'till 8PM!

Caravelle Restaurant

Chinese Vietnamese Cuisine

Lunch Buffet \$5.25

Special Dinner Buffet \$6.25

2nd dinner 1/2 price with this coupon

SPECIAL

Szechuan Fish \$15.95 (whole walleye)

Singapore Rice Noodle \$7.25

2233 Energy Park Drive (at Raymond near U of M St. Paul Campus)

644-2327

Liquor from 1

presentations, recommended approval of both liquor licenses.

At the community council meeting on Sept. 7, however, several North St. Anthony Park residents urged the council to slow down and get more input from the neighborhood before sending the city a recommendation.

"We've all heard glowing reports about Ms. Anderson and the bakery ... and would love to have it," said Janet

Quale. "We've heard little of the doctor and his plans."

William Glew, a Como Avenue resident, also urged caution, and added that the "personalities and intentions of the applicants are not at issue here; the liquor license is. People come and go. ... There are no assurances this will operate long term in the way we want it to."

Glew went on: "We don't need a liquor license in St. Anthony Park. I am absolutely opposed" to it.

After hearing from several others, council member Richard

Klimala finally summarized the issue: "We need to hear more voices from the community before we approve a license."

Earlier in the meeting, Community Organizer Abby Struck had noted that the city had not completed "the usual background check, health inspection and fire inspection." Struck added, "We have plenty of time to address this next month if we choose."

By holding the October 12 meeting at the library, the community council is hoping to encourage public participation. For more information about the meeting, call the council office, 292-7884.

Prior to that meeting, residents are invited to an informational meeting on Tuesday, Oct. 4, 7 p.m., at the St. Anthony Park Library. The meeting is intended for people who oppose the granting of liquor licenses to L'Europa in Milton Square. People interested in attending this meeting may call 645-1135 for more information.

Violence from 1

violence in all forms for one day of the 365 in a year," said Falcon Heights City Council Member Sue Gehrz, describing the city's plans at a recent council meeting. Though violence depicted on television and in movies is part of the campaign—Falcon Heights residents will be given static stickers to put on their television sets—Turn Off the Violence is "not about censorship," Gehrz said.

Each community or neighborhood is encouraged to develop its own approach to educate and inform people. In Falcon Heights, the Human Rights Commission is spearheading the campaign.

"The commission is looking for projects to help educate people," said Dave Bowers, former chair. "This is an issue that concerns almost everyone."

Commissioners and other community volunteers will go door-to-door distributing the static stickers as well as a pamphlet providing "Tips and Tools" on non-violent alternatives to settling arguments, ways to control anger and non-violent media ideas for parents.

The city received a \$700 grant from the Neighborhoods and Communities Action Team of the Ramsey County Violence-Free Initiative to pay for the stickers volunteers will hand out. The City Council also approved spending "up to \$500" to copy leaflets that will be distributed and for hats which volunteers will wear to heighten awareness of the campaign.

Bowers and Gehrz said the commission hopes to follow up

the campaign with a survey to determine if people are benefiting from the information they will receive.

In St. Anthony Park, a program is planned on Oct. 27, the official date that Turn Off the Violence will be observed statewide. The community council, through its crime prevention program, is sponsoring a free evening at Langford Park to provide information on alternatives to violence for adults and school age children.

Working with the children will be Ann Foster, licensed independent clinical social worker and "good listener to the story each child has to tell." She will interact with children at specific age levels to teach them how to recognize and resolve violent behavior. Adult supervision of the children's sessions will be provided by the crime prevention block workers, according to Katie Utke, coordinator.

Three presentations are lined up for the adults. Representatives from the St. Paul Police Department's Research Unit will present information and statistics about violence and crime trends in St. Anthony Park. John Grayson, court clerk for Ramsey County's Family Court, will address violence in the context of the media, legal system and domestic abuse. Jim Levin, director of the Dispute Resolution Center, will discuss the mediation process and how to use it to resolve neighborhood conflicts.

Reservations are required for these sessions and may be made by calling the district council office, 292-7884, by Monday, Oct. 24.

GEM NOTES

by Suzanne Fantle

The Dazzling Opal

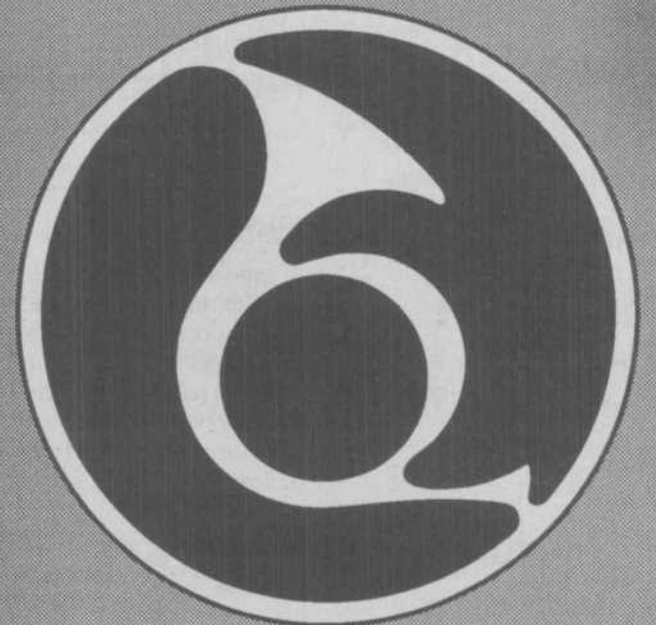
What gem is more colorful than the birthstone for October, the dazzling opal? Opal has been admired and treasured by people for centuries. The learned Roman scholar, Pliny, described opal as having the "fire of the carbuncle, the brilliant purple of the amethyst, and the sea-green color of the emerald, all shining together in incredible union." Eastern peoples esteemed opal highly, regarding it as a sacred stone embodying the spirit of truth. Orpheus wrote "The opal fills the hearts of the gods with delight." The ancient Arabs believed that opals fell from heaven in flashes of lightning and thus acquired their marvelous colors. The Empress Josephine owned an opal that was named "The burning of Troy" because of its dazzling play of colors. Through the years, opals have become the favorite gem of millions of people.

EMIL GUSTAFSON JEWELERS

Open House & 83rd Anniversary
September 27 - October 1
ENJOY 15% SAVINGS
ON ALL IN STOCK ITEMS
Gifts, Prizes, Refreshments

2262 Como at Carter
in Milton Square
St. Anthony Park, MN 55108
645-6774

Monday-Friday, 10-6
Sat. 10-2
Octoberfest Sat. Oct. 1, 10-5



MUSIC IN • THE PARK

Music in the Park Series: 1994-95 16th Season

- OCT. 9** ENSEMBLE CAPRICCIO
Chouhei Min and Taichi Chen, violins;
Korey Kankol, viola; Mina Fisher, cello;
JAMES VANDEMARK, double bass;
JOSEPH BROWN THUNDER, JR.,
narrator; **THE BOYS**, Native American
drumming/chanting group; Twin Cities premiere of
Circle of Faith - The Words of Seattle, works by
Dvorak and Davidson
- NOV. 13** ROSALYRA STRING QUARTET
Sarah Kwak & Celine Leathehead, violins;
Sabina Thatcher, viola; Beth Rapier, cello with
Tony Ross, cello
- DEC. 4** JULIA BOGORAD, flute
XIANG-DONG KONG, piano
- JAN. 22** JOANNE BRACKEEN, jazz pianist
- FEB. 26** SILK AND BAMBOO ENSEMBLE
"The Power of the Moon" performed on traditional
Chinese instruments.
- APR. 30** THELMA HUNTER, piano
JOHN HUNTER, clarinet
KAREN URSIN HUNTER, flute
SABINA THATCHER, viola
KATHY KIENZLE, harp

- APR. 9** Special Debut Artist Concert
MARK KOSOWER, cello
LAMBERT ORKIS, piano
The Music in the Park Series and The Schubert
Club present critically acclaimed young cellist in
concert with National Symphony Orchestra pianist.
\$10, \$8 with season ticket.

ALL CONCERTS ON SUNDAYS AT 4 PM
EXCEPT APRIL 30, 7 PM

ST. ANTHONY PARK UNITED CHURCH OF CHRIST
2129 Commonwealth Ave. at Chelmsford St. in St. Paul

SEASON TICKETS: 6 CONCERTS: \$54
SINGLE TICKETS: \$12 (\$10 advance purchase)
(Student rush: \$6)

TICKETS AVAILABLE AT
THE BIBELOT SHOP (646-5651) & MICAWBER'S BOOKSTORE
(646-5506) in St. Anthony Park. GROUP RATES AVAILABLE

Information / Brochure: 644-4234.

Music in the Park Series, 1333 Chelmsford St., St. Paul, MN 55108

PLAYING • COOKING • PAINTING • CRAFTS

St. Anthony Park
United Methodist Church
Nursery School

Como at Hillside Avenue

Tuesday, Wednesday, Thursday
morning and afternoon sessions.
We currently have openings in the
afternoon session.

Register now for fall classes
647-6385

Ages 3-5

FIELD TRIPS • SHARING • FRIENDS • FUN!

PUPPETS • FAMILIES • STORIES • SINGING

In the
Crisp Cool
of Autumn,
There's
a Glow at
The Bibelot.

Clothing, Gifts & Jewelry

**THE
BIBELOT
SHOPS**

2276 Como Avenue, St. Paul • 646-5651
1082 Grand Ave. at Lexington • 222-0321
9:30-8 Mon.-Fri., 9:30-5 Sat., 12-5 Sun.



COMO PARK

Como Zoo Boo

Como's Zoo Boo is a safe and exciting alternative or addition to traditional trick-or-treating. Visitors who follow the outdoor Zoo Boo path will receive treats at many decorated stations. The Zoo Boo will be open from 5:30 to 8 p.m. on Oct. 22, 23, 24, 29

and 30. Admission is \$3.50 in advance, \$4 at the gate for children (trick-or-treaters); admission for adults (non trick-or-treaters) is \$1. Advance tickets are available at the zoo's gift shop, at participating Snyder Drug Stores, or by mail by sending a self-addressed, stamped envelope with payment and ticket request to: Como Zoological Society, Zoo Boo Tickets, P.O. Box 131192, St. Paul, MN 55113. A special entry gate will be marked for advance ticket holders only. Tickets may be used for any evening of Zoo Boo.

This event helps raise funds for improvements at Como Zoo. For more information, call 488-4041.

Fall rummage sale

The Lyngblomsten Auxiliary will hold its annual fall rummage sale on Thurs., Oct. 6 and Fri., Oct. 7, in the Lyngblomsten Care Center Community Room, 1415 Almond Ave. The doors open at 9 a.m. on both days and close at 2 p.m. Friday is Bag Day, with only \$2 charged for everything the buyer can fit into one bag.

For more information, or to donate your time or items for the rummage sale, contact Shirley Brekke, 774-2154, or Lyngblomsten's Community Relations Department at 646-2941.

New Lyngblomsten building open

The public is invited to an open house at Lyngblomsten's newest building, The Heritage at Lyngblomsten, 1440 Midway Parkway, on Thurs., Oct. 27, from 3 to 7 p.m.

The Heritage is a 60-unit market-rate senior apartment complex created to serve the varying needs of older adults. It provides private living quarters for its residents while offering assisted living services such as personal care, housekeeping, medication monitoring, transportation and meals.

Fall bazaar

Do your fall and holiday shopping at Como Park Lutheran Church's annual bazaar, bake sale and meat loaf dinner on Fri., Oct. 14. The bazaar, with handmade items,

and the bake sale are from 2 until 8:30 p.m. The homemade meat loaf dinner will be served from 4:30 to 7:30 p.m. Cost for the dinner is \$5 for adults and \$2.50 for children 10 and younger. The church is located at 1376 Hoyt Ave., one block west of Hamline Ave.

Northwest Como Rec Center

Registration for basketball and hockey will take place on Oct. 3, 5, 11 and 13 from 6 to 8 p.m. at Northwest Como Recreation Center, 1557 Huron Ave. (Hamline at Hoyt).

Northwest Como will sponsor several classes and events during October. Call the center at 298-5813 for more information.

A special Teen Triathlon will be held on Sat., Oct. 8, beginning at 10 a.m., at Como Park. There will be a paddle event with a partner, a running event and an obstacle course. Awards will be given to the top three in each age group: 11 & 12, 13 & 14, and 15 & 16. A registration fee of \$8 may be paid at any local St. Paul recreation center.

Thanks to 130 volunteers who donated over 500 hours parking cars at the Shiely Company lots during the State Fair. This yearly activity is the main fundraising activity for the rec center. Thank you, Shiely Company!

Race and Fun Run

The Minnesota Student Chapter of the American Veterinary Medical Association will host its third annual "Makin' Tracks" Race and Fun Run in Como Park on Sat., Oct. 15, at 9 a.m. Featured will be a 5K TAC-sanctioned cross-country race; a 5K people and pet fun run; awards for racers and pets; T-shirts for runners and bandanas for pets; refreshments and more.

Pre-race registration of \$12 is due by Oct. 7. Late registration on race day is \$15. For more information, call 624-4747.

FALCON HEIGHTS

Dance school opens

Midwest Youth Dance Theatre (MYDT), a new performing arts school for students of all ages, opened in September in Falcon Heights on the corner of Snelling and Larpenteur

Avenues. Lessons are offered in ballet, tap and jazz. The school's operators are Kim Martinez and Amber Erling. Students will be active in the community through the upcoming year, performing for elementary schools, nursing homes and community events.

Classes began Sept. 12. For more information, call 798-5330.

Next To New Sale

The Junior League of St. Paul is hosting its annual Next To New Sale on Sat., Oct. 1, at the Empire Commons Building at the Minnesota State Fairgrounds. The sale runs from 8 a.m. to 4 p.m. and will feature new and slightly used merchandise at discount prices. Funds raised will benefit the charitable community projects of the Junior League, an organization for women volunteers.

Admission is \$2 at the door between 8 and 10 a.m., when the selection is at its peak. The sale will be closed at 12:30 p.m. to reorganize, and will reopen at 1 p.m.

Call the Junior League office with any questions: 291-0315.

Gibbs Farm calendar

Harvest and Halloween will be celebrated at Gibbs Farm Museum, 2097 Larpenteur Ave., with several events on Sundays from noon to 4 p.m.

The annual Harvest Festival will be held on Sun., Oct. 2. The highlight of the afternoon will be a raffle with prizes of a homemade quilt, gift certificates and tickets to local theaters. Harvest Festival has also traditionally featured an old-fashioned square dance (visitor participation is encouraged) and other musical entertainment, as well as various crafts demonstrations and refreshments for sale.

Cooking Day will be the theme on Sun., Oct. 9. Learn about cooking on a wood stove while sampling its successes.

Sun., Oct. 16, is Corn Husk Doll Day. Learn how to make corn husk dolls—one of the pleasures of an old-fashioned childhood.

Halloween Traditions will be featured on Oct. 23. Halloween has always been a magical night in many different traditions, both Christian and

ALL SEASONS CLEANERS

Full Service Professional Dry
Cleaners and Launderers

OCTOBER BEDDING SALE

1/2 OFF
BEDDING CLEANING
INCLUDING BEDSPREADS, BLANKETS
AND QUILTS

\$2.00 OFF
**FEATHER PILLOW
CLEANING**
INCLUDES NEW TICKING

Above specials not valid with other offers.
Prices good through October 31, 1994.

**MILTON SQUARE
COMO AT CARTER**
644-8300

Mon.-Fri.: 7am - 6pm Sat. 9am - 5pm

Nilles Builders, Inc. 1032 Grand Ave.

Remodeling • Roofing
Renovation
Additions
Windows & Siding
General Contracting

**222-8701
Brad Nilles**

MIC
MINNESOTA
INTERNATIONAL
CENTER

English Conversation Classes for International Women at St. Matthew's Episcopal Church, 2136 Carter Avenue begin Thursday, October 6, 9:30 a.m.-11:30 a.m. near the St. Paul campus. Free of charge. For more information, call 644-7491 or 625-4138.

body science

SPINAL MANIPULATION • NON-SURGICAL INTERVENTION • DRUGLESS
NUTRITIONAL THERAPEUTICS • AUTO, SPORT, WORK COMP INJURIES

Dr. Candace McKay Matthiae

2301 Como Avenue Suite 202 St. Paul, MN 55108 644-1147

Chiropractic Physician

pagan. Carve jack-o-lanterns or bogeys from pumpkins and the more traditional turnips to chase away the evil spirits.

Candles were a vital part of life before the advent of kerosene. On Sun., Oct. 30, learn the skill and patience involved in making candles to light the long winter's evenings.

Admission for most of the Sunday afternoon events is \$2.50 for adults, \$2 for seniors and \$1 for children. Admission for the Harvest Festival will be \$3.50 for adults, \$3 for seniors and \$1.50 for children.

The Gibbs Farm tradition of All Hallow's Eve tours will continue this year on Oct. 21, 22, 28 and 29, starting at 6:30 p.m. Reservations are required. These evening tours of the farm investigate the stories and traditions of Halloween. You will hear stories from many different cultures and peoples, from the traditional American story, "Lavender," to "Spear Finger Woman" from the Cherokees of Virginia. The cost for All Hallow's Eve tours is \$4 for adults, \$3.50 for seniors and \$2 for children.

Call 646-8629 for more information.

Exploring women's spirituality

A support group for women doing spiritual exploration, called Women's Spiritual Quest, is beginning this month at Falcon Heights United Church of Christ. The perspective will be non-denominational, feminist, interfaith, open and eclectic. For more information call Hilda Kuester at 646-2681.

Building gets new owner

Wellington Management, Inc. has recently purchased Falcon Crossing (formerly Bullseye Plaza) at the corner of Snelling and Larpentur Avenues. The complex is 75 percent leased to 10 tenants, the largest of which are Champion Auto and Chinatown Restaurant.

Owned by Steve Wellington of St. Anthony Park, Wellington Management, Inc. now lists 26 buildings in the Twin Cities area in its real estate portfolio.

Fire Department Open House

The Falcon Heights Fire Department will host its annual fall open house on Sat., Oct. 15, 10 a.m. to 2 p.m., at the fire station, Larpentur Avenue and Prior Street.

The city's fire and rescue vehicles will be on display, as well as an antique fire truck. Kids can participate in a water relay race and win a T-shirt by completing a fire safety course.

Fire Capt. Greg Peterson said department personnel will demonstrate the "jaws of life," emergency equipment used to remove people from cars. A demonstration involving an actual fire also is planned. The Falcon Heights/Lauderdale Lions Club is helping to finance the open house activities, which are free to the public.

LAUDERDALE

Peace Lutheran holds beef dinner

The members of Peace Lutheran Church, Walnut and Lone in Lauderdale, are hosting their annual beef dinner on Sat., Oct. 29, from 5 to 7 p.m. The meal of beef, mashed potatoes and gravy, cole slaw, corn, rolls, pie squares and beverage is a long-standing tradition at Peace, whose women began earning money for church endeavors even before the congregation was officially organized in 1935. Now the annual event is put on by the whole parish with over 80 volunteers typically involved.

Tickets, which may be purchased at the door, are \$6.25 for adults and \$2.50 for children 6 to 12.

Participants are invited to bring a non-perishable food item for the Ramsey County Emergency Food Shelf Program.

ST. ANTHONY PARK

Seminary programs

Schiotz memorial events

Two days of events on Oct. 23 and 24 will honor the memory of Fredrik Schiotz, a former president of the Evangelical Lutheran Church, the American Lutheran Church and Lutheran World Federation.

A 10 a.m. Mon., Oct. 24 Andrew Burgess Lecture by Jaroslav Pelikan, entitled "For the Bicentennial of the Kodiak Mission, Russian Roots of the American Spirit," will be at the Olson Campus Center, Hendon Avenue at Fulham Street.

Call 641-3451 for more information.

Luther Songfest

The third annual Luther Songfest will be held from Oct. 28 to 30. All weekend activities will be at Luther Seminary, except for a Saturday evening HymnSing at Augsburg.

The events will have a Danish American flavor, including a display of Danish immigrant artifacts in the Campus Center.

Friday evening begins with a Danish smorgasbord and a free concert with the Augsburg Centennial Singers and two famous Scandinavian musicians, Iver Kleive and Sondre Bratland. Reservations for the smorgasbord must be made by Tuesday, Oct. 25.

Saturday activities include a morning conference, "Memory and Renewal," featuring keynote speaker Steffen Arndal, professor of German at Odense University, Denmark. An afternoon Children's Fest will feature Scandinavian games, music, dancing, crafts and food. Then Anton Armstrong, director of the St. Olaf Choir, will direct children's choirs at a family worship service. These events are free.

On Sun., Oct. 30, the Luther Seminary Friends organization sponsors the seventh annual "Singing the Faith" Reformation Service at 7 p.m. at Olson Campus Center.

For more information about Luther Songfest, call 641-3486.

Plan library addition

Interested community members are invited to join a Library Planning Committee being formed to work with city staff on plans for the addition to the St. Anthony Park Branch Library, Como and Carter Aves.

The first committee meeting is scheduled for Monday, Oct. 3, 3 p.m., at the library. Several members of the library association also will serve on the committee. To join or for more information, call Arlene West, 649-0481, or Marti Lybeck, 292-6635.

Continued on p. 16



COFFEEHOUSE

**Buy 1 coffee
2nd coffee 1/2 price**

with this coupon through 10-31-94

- Fresh hand-roasted coffee
- Italian sodas
- Pastries/bread and cheese
- Torani syrups for your choice of any flavored coffee or soda

Watch for the schedule of live acoustic music and readings
See Lori for information

1441 N. Cleveland at Buford
across from the St. Paul Campus

M. Mariano & Co. for Hair



Maureen, Lori, Terrie

Contemporary Cutting, Coloring & Perming
for Men, Women & Kids!

Visit our Salon Tuesday thru Saturday
including evenings Tuesday thru Friday.

645-7655

2301 Como Ave.

ST. ANTHONY PARK HOME



We invite all the neighborhood
ghosts and goblins to come
Trick or Treating on Monday the 31st.

2237 Commonwealth 646-7486

BRING YOUR DREAMS TO THE BANK YOU KNOW

NEW PURCHASE

REFINANCE

FHA AND CONVENTIONAL

FIXED OR ADJUSTABLE
RATES

LOW OR NO COST
PROGRAMS

When home is where your heart is,
bring your dreams to Park Bank.

Our wide range of mortgage services
and our commitment to personal
attention will help make your
buying, building, remodeling or
refinancing dreams come true.

personal attention and follow-through for all your mortgage needs

ParkBank

St. Anthony Park State Bank

2265 & 2300 Como Avenue • St. Paul, MN 55106 • (612) 647-0131



Equal Opportunity Lender

Member FDIC

BEWITCHING WISHES



Cast a spell of fun over family and friends this
Halloween with captivating Carlton Cards.

Carlton
CARDS

PHOTO FINISHING

	3 1/2 x 5	4 x 6
12 exp.	.99	1.99
24 exp.	2.99	4.49
36 exp.	3.99	5.99

TWIN PRINTS
an additional \$1⁰⁰

Color Print Film Only
Not valid with any other offer
With coupon. Expires 12/1/94

MILLER PHARMACY

Como and Doswell
2309 Como

HOURS:

M-F 9AM - 8PM

Sat. 9AM - 5PM

Sun. 10AM - 2PM

646-3274

larson
decorating
INTERIOR
professional
paper hangers
painters



Licensed • Insured • Bonded • D2237

Jim Larson
644 - 5188

Experienced in water
damage repair
interior and
exterior

- Taping & Ceiling Spray Texture
- Residential & Commercial
- Patching Sheetrock Repair
- Staining & Varnishing

Certified Public Accountants

Catherine Holtzclaw
CPA, MBT, CFP

Dan Bane
CPA

INCOME TAX

Tax Planning and Preparation for:
Individuals
Corporations
Partnerships
Estates & Trusts

BUSINESS SERVICES

Compilation of financial statements
Payroll tax guidance
New business startup
Bookkeeping services

Bane, Holtzclaw & Company
at the corner of Como & Doswell
Call 644-1074

• People's Choice Award •
Roseville Bakery and Retailer Bakers
of America celebrate
October - "Breadfeast"
Mix or Match

1lb. white 55¢ reg 95¢
1lb. wheat 85¢ reg \$1.30 Limit 3

• Breadfeast Special • Sun Flower Seeds
Roseville's Award Winning Honey, Molasses
NEW Bakers Introduce NEW Oatmeal
Ukrainian Bread Sesame Seeds
to their customers **\$2.09** Limit 3

• Fall Harvest Special •
Apple Spice Cake
Right from Sir Isaac Newton's Orchard
8" One Layer Cake **\$2.95**

Halloween Treats On Us!
Halloween Cookies, - 10% Off
assorted variety
Cup Cakes - 39¢ ea. reg. 49¢ ea.
Cakes - 10% Off

Roseville's Real Bakery
Larpenteur and Lexington in the Roseville Center 489-1714
1 doz. Cookies FREE, with the purchase of 2 doz.
(Special Cookies Only)

School News

Murray Junior High

School has begun!

This year Murray has about 740 students, which is about the same as last year, but the halls seem a lot more crowded. But I think the first few weeks went well.

This fall students have the opportunity to play soccer and/or join the French, math and science clubs.

Murray had a successful book fair from Sept. 19 to 23 in the library. It gave students a chance to buy scholastic books for themselves and raise some money for Murray.

Murray's open house on Sept. 22 gave parents/guardians a chance to meet teachers, see the school and experience their child's schedule.

On Sept. 28, students will have their pictures taken for the year-book and for themselves.

Seventh and eighth graders will have MAT testing the week of Oct. 10 to 14. We will be tested on everything from science to English.

Report cards for the first quarter will be sent home at the end of October.

And to leave on a high note, the state teachers' meetings will be on Oct. 21 and 22. So that means no school for students!

Megan Tracy

St. Anthony Park Elementary

It's a new year at St. Anthony Park Elementary School. And to go with the new year, we're trying out new things.

For one, we are beginning a new program, "peer mediation," which is a group of 36 kids in grades 5 and 6 helping other kids solve arguments and other problems on the playground. Those 36 kids will have a two-

day training session at school, taught by teachers. Our principal, Tom Foster, hopes that this arrangement will reduce fighting during recess.

Nancy Plagens, one of our enrichment assistants, is taking over for Lori Eckert, who just had a baby over the summer. Mrs. Plagens is teaching with Judy Roe in the fourth grade. Lori Brown also had a baby before school started. Taking over for her will be a newcomer to the school, Mark Ehrke.

Our annual open house was held on Sept. 20. Parents got a chance to see their children's classrooms and meet their children's teachers.

An activity for the kindergartners is a fall trip to an apple orchard. The 4th grade classes spent Sept. 13 at Belwin Nature Center. They learned about beaver ecology, birds, the prairie, and other interesting things about nature. The 6th grade will go for a 5-day trip to the Environmental Learning Center at Wolf Ridge in Finland, Minn., on Oct. 10 to 14. They will learn about the environment around them and will participate in the daring and exciting ropes course.

All in all, we think it's going to be a great year!

Siri Larson & Rachel Abbott

Falcon Heights Elementary

Falcon Heights school has really changed since last fall. A new gym has been added. The new gym is large enough to maybe host the honor chorus this coming spring. The school also received more advanced technology. Every class will have a TV and a computer network that can send notes from teacher to teacher throughout the school. An addition was put on the staff office. Five or six feet were added to the classrooms. The classrooms also were carpeted if wanted by teachers.

Last spring, the school had to fight the noise—from jackhammers, concrete saws and pile

drivers. At some times the only thing we could do was read books silently. At times we were walking around sawdust, concrete dust, construction equipment and MUD. It was worth it though.

When my classmates and I came back this fall it was almost a brand new school. Almost everyone likes the changes. I think it's great!

Eric Blomquist

Holy Childhood

We are beginning this school year with a wonderful new principal, Miss Patrice Brady. Miss Brady has been a teacher and principal at a number of different Catholic schools. Holy Childhood is proud to have such a fabulous principal!

We are practicing a virtue each month. For September our virtue is friendliness. Daily practice of the virtue includes the students and the staff. We are hoping that everyone will really practice friendliness.

We also have a new third grade teacher, Miss Maresch. She is a great teacher and the third graders love her.

This year Holy Childhood is starting a new program called Christian Students of the Week. The students are chosen by their kindness, effort and cooperation.

The sports teams are practicing hard and are ready to win! The boys' soccer team has players ranging from 5th-8th graders. Along with their coaches, they have high hopes for this season. The girls' volleyball teams are hoping to walk in the footsteps of last year's "A" team by winning the tournament at the end of the season.

On Oct. 27, Holy Childhood will be having its first open house for this school year. Parents will have a chance to meet our new principal, visit with the teachers and view their children's work in their classrooms.

On Oct. 1, Holy Childhood will participate in the non-public marathon at Como Lake. We will join 12 other schools walking around the lake. After the walk (or bike ride) we will have hot dogs, potato chips and pop. Moms will furnish the dessert.

Rachel Kaiyalethe & Megan Pierce

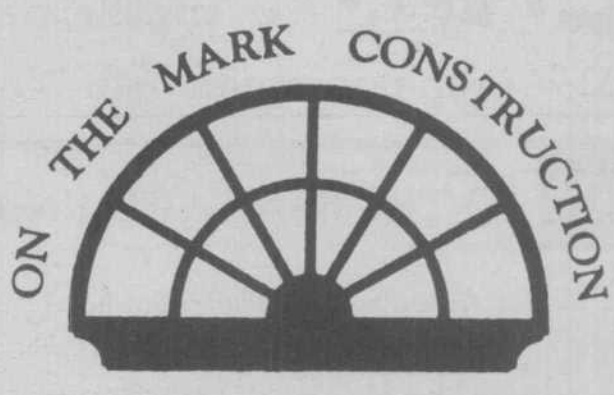
Como Park High School

Hey hey hey, school is back under way. The year has started out fairly well at good ol' Como Park. Aside from the lunchroom facilities not functioning yet, the library being under construction, still, the messed-up-needs-to-be-changed schedules, and shorter passing times, everything here is A-OK.

All the sports have gotten off to an awesome start. Looking for something to do? Why don't you come out and support your favorite Como sport? You can see exciting high school action and enjoy good, quality concession stand food all for a low, low price! Come on, what are you waiting for?

Continued on next page

ON THE MARK CONSTRUCTION



**FORMING A PARTNERSHIP
THROUGH CREATIVE USE OF
BUDGET, PRODUCT, SPACE
AND STYLE.**

WE DESIGN/BUILD:

**ADDITIONS
KITCHENS
BATHROOMS**

645-8484

LICENSED • BONDED • INSURED • FREE ESTIMATES

Homecoming this year is the week of Oct. 10 to 14. Throughout the week there are dress-up days, the exciting Powder Puff game (senior girls vs. junior girls. Juniors will win this year!), the Homecoming dance and the long-awaited football game. This year the Como Cougars play the Central Minutemen. It will be a tough battle, one you won't want to miss. Cougar alumni and other Cougar fans are cordially invited. Come and help cheer our Como team to a victory!

Carin McIntosh

Central High School

On Thurs., Sept. 8 at 7:30 a.m., St. Paul Central High School was buzzing once again with activity.

Four neighborhood residents were elected to the 1994-95 Student Council Management Team. Todd Nakanishi, Trygve

Throntveit, Alex Westhoff and myself are working with six other members to plan Homecoming week. Coronation will be Oct. 5; the pepfest and football game will be on Oct. 7.

National Honor Society has started out with a bang as Co-Presidents Ben Westhoff and Amanda Steven take over.

The community can support the undefeated boys' soccer team on Oct. 5 or Oct. 12 as it takes on Highland Park and Cretin-Derham Hall. Team members Dan Wiley and Joey Jensen stated, "We're going to continue rocking the house!"

The girls' volleyball team is having a great season under the leadership of April Larson and Erica Schumacher.

Don't forget yearbook picture day on Oct. 6.

Cory Tennison

Chelsea Heights Elementary

Chelsea Heights has begun the school year with an enrollment of 753 students. Three new staff persons have joined the faculty. Jody Grote is full-time Special Education teacher and Kathleen Thompson is part-time Special Education teacher. Norma Tepaske, former Special Education teacher at Chelsea Heights has moved to New Jersey. Nancy Olson is team teaching a first grade. Chuck Wollmering continues as principal of Chelsea Heights and the Eisenmenger program at St. Andrew's. The portable classroom at Chelsea Heights has been removed from the corner of Hamline and Hoyt by the School District.

Submitted by Chelsea Heights school staff

Taxes from 1

the longtime county commissioner added.

Coleman and Schaber expressed concern that the problem could grow worse, as middle-income and upper-income families move out of the city, leaving low-income families behind.

"I would hope and believe that we are all pro-kids," said Coleman. "But an increased property tax levy sends the wrong message to an already skeptical public." In light of a school administration recommendation to hold the levy increase at 4.9 percent, Coleman called the school board's move to 5.8 percent "unconscionable."

Property owners will receive truth-in-taxation notices between Nov. 10 and 24. The property tax estimates that appear on the notices are meant to give property tax owners an idea of what their taxes will be next year. Because those notices

are prepared with the maximum levy figures adopted in September, further levy cuts won't be reflected in the estimates.

But the factors affecting your property tax bill go beyond the facts and figures unveiled with the local government budgets. In the Bugle area, rising property values will play a major part in the amount of property taxes assessed. Estimates prepared by the Ramsey County Revenue Division indicate that about 11,889 homes, or 21 percent of the homes in the entire city, will see tax increases of 7.6 to 23.1 percent. These homes had valuation increases of more than 5 percent.

About 29 percent, or 15,975 homes, have had valuation increases of plus-1 to 5 percent. Their property taxes will go up about 2.6 to 12.8 percent. About 40 percent, or 22,620 homes, will see no increase in property value. These property owners can expect tax increases of 2.5 to 2.7 percent. Ten percent or

5,494 homes in St. Paul have property value decreases. These property owners may see property tax increases of 2.6 percent or less. A 7.6 percent tax decrease is even possible for some.

In past years, declining commercial-industrial property taxes have resulted in a shift of the tax burden to residential properties. That shift won't be felt as strongly in 1995, according to Chris Samuel, Ramsey County Revenue Division manager.

Samuel explained that the plummeting decreases in market value of St. Paul's commercial and industrial properties appear to have slowed. In 1994, that shift accounted for about half of the increased property tax burden. In 1995, the shift will account for .6 percent of the tax hike.

Jane McClure is the reporter for the Neighborhood and Community Press Association's St. Paul Neighborhood News Service.



CALL BEFORE YOU DIG! 454-0002. NSP



The Transformed Tree

Remodelers and Cabinetmakers

Custom Kitchens Creative Bathrooms Home Additions

Experienced, Dedicated Craftsmen in our 21st year of business

Certified Remodelers on staff
licensed/bonded/insured
State License #1856

646-3996

2239 Carter Ave. in St. Anthony Park

NARI
MEMBER

THE CROMWELL

Full Menu

Mon - Sat. 11a.m. - 9p.m.

The Buffet is Back!

10 oz Steak Dinner \$6.⁹⁵

Th-F-Sat. 5p.m.

2511 University Ave

646-1243 Take Out

"If I must have people working in my house, I'd like them to be courteous and friendly."

I wonder who I should call."



We Enjoy Making Homes Better.

646-6436

MN LIC 3700

Bugle Check the classifieds!

How to get the most support from your pension.

If you choose a single life annuity for your pension payout, you could leave a surviving spouse with nothing. But, if you choose a joint annuity that does provide for a surviving spouse, you'll have to settle for a lot less money now.

At Lutheran Brotherhood, we have an alternative: our Pension Maximization Service. This service will design a cost-effective plan that helps you get the most out of your pension now, and in the future.

Call your Lutheran Brotherhood representative today. When it comes to your retirement, we never stop working.



Leif M. Hagen, FIC
DISTRICT REPRESENTATIVE
2780 Snelling Ave. N. Suite 201
Roseville, MN 55113
612-635-0500

LUTHERAN BROTHERHOOD
A Family of Financial Services for Lutherans

INNOVATORS

Basement Remodel

Home Offices

Ceramic Tile

Bathrooms

Kitchens

Repairs

Additions

Renovations

Exit Windows

Local References

Licensed. Bonded. Insured.

645-9369

New # New Address in your neighborhood
to serve you better.

Arts Calendar

Literature

The **St. Anthony Park Writers' Workshop** will meet on Tues., Oct. 4 at 7:30 p.m. at 2116 Skillman Ave. W. in Roseville. For further information, call 639-9465.

Two events sponsored by **The Loft** will take place in St. Anthony Park in October.

"Wide Open," monthly open readings at Susan's Coffeehouse and Deli, 2399 University Ave., will be held on Mon., Oct. 3 at 7:30 p.m. Writers are invited to bring new work, old work or works-in-progress.

A workshop entitled "Reading the Landscape" is an unorthodox approach to nature reading that explores the garden and landscape as source material. Led by Kate Hallet Dayton, it will be held on Sat., Oct. 29, from 1 to 3 p.m. at the St. Anthony Park Library, 2245 Como Ave. The cost is \$18; \$15 for Loft members.

Call 379-8999 for more information.

Music

Tom Hunter will be in concert on Sat., Oct. 8, at Falcon Heights United Church of Christ, 1795 Holton St., at 7 p.m. He is a nationally-recognized singer/storyteller best known for his children's songs, "The Seed Song" and "Rock Me to Sleep." Hunter leads workshops across the country for local school district teacher in-service training in Whole Language Through Song.

The first half of the concert is for younger children, following which they will be engaged in a program of storytelling and cre-

ative play by the Falcon Heights Youth Ministry Team. The second half of the concert is designed for those "grown and still growing."

The **New Folk Collective** is sponsoring three concerts in October at the University of Minnesota St. Paul Student Center Theatre, 2017 Buford Ave.

On Sat., Oct. 8, **John McCutcheon** will perform at 7 and 9:30 p.m.

Singer/songwriter **Bob Franke** will be in concert on Sat., Oct. 22 at 7:30 p.m. Two of his songs have been listed among the top ten of all-time favorite folk songs: "The Great Storm is Over" and "Hard Love." Jon Svetkey will open for Franke.

On Sun., Oct. 30, at 2 p.m. **Bill Staines** will perform, along with **Aileen & Elkin Thomas**. The Thomases have performed with artists such as Bob Dylan and Pete Seeger.

Tickets for all concerts are \$9 in advance; \$10 at the door; \$5 for University of Minnesota students. Call the New Folk Collective, 379-3951.

The **Twin Cities Jazz Society's** critically-acclaimed concert series "Jazz from J to Z" returns this fall for a fourth season of seven concerts at the University of Minnesota St. Paul Campus Student Center Theatre, 2017 Buford Ave. All concerts will be held at 7:30 p.m.

"The West Coast Sound Revisited" will kick off the season on Sat., Oct. 15, with saxophonist **Jeff King** and his quintet's tribute in music and words to jazz's "Cool School" era.

A subscription series ticket to all events is \$40 for TCJS members, students and seniors or \$60 for all others. An individual concert ticket is \$5 for TCJS members, students and seniors for the Oct. 15 concert, or \$8 for the general public. The policy of one free admission with a new TCJS membership will continue to apply, except for the February and April concerts.

For ticket information, call Pete Cameron, 937-5216. For further information on the series, call Paul Winger, 644-6742.

St. Anthony Park resident **Georgette Pfannkuch**, regular host of the bilingual radio program "Bonjour Minnesota" on

KFAI, 90.3 FM, will be featured on that station's "Jazz Corps" program on Oct. 12, at 10 p.m. Pfannkuch will join KFAI jazz host Bob Jeager for a special edition of Wednesday Night Jazz.

On Pfannkuch's regular show on Oct. 26, she will explore the French influence on St. Petersburg, Russia, where she visited in June. "Bonjour Minnesota" airs each Wednesday at 8 p.m.

St. Matthew's Episcopal Church will begin its **Recital and Evensong Series** on Oct. 16. Evensong, a choral worship service modeled on the English cathedral tradition, will be sung on five Sunday afternoons at 5 p.m. and preceded by organ recitals at 4:30 p.m. Both are free.

J. Michael Compton, organist at St. Matthew's, will present an organ recital on Oct. 16. The choirs of St. Martin's Episcopal Church (Minnetonka) and Calvary Episcopal Church (Rochester) will then sing with the St. Matthew's choir, conducted by Monte Mason, organist and choirmaster at St. Martin's.

A freewill offering will be taken for the benefit of the American Diabetes Association to provide funds for Camp Needlepoint, a camp for diabetic children.

French classical guitarist **Philippe Loli** will perform on Sun., Oct. 30 at 8 p.m. at the University of St. Thomas in a concert organized by the Twin Cities Alliance Française, 821 Raymond Ave.

Tickets are \$8 for adults and \$5 for students. They may be ordered by calling the Alliance Française at 644-5769 by Oct. 15.

Visual Art

"**Under the Influence of Women**," an exhibit featuring work by four nationally-known women ceramic artists, runs through Nov. 4 at the **Northern Clay Center**. Linda Christianson, Karen Gunderman, Gail Kendall and Gail Kristensen are the featured artists.

The Northern Clay Center is located at 2375 University Ave. Gallery hours are Monday through Saturday, from 10 a.m. to 5 p.m.



NEW LIST - UNIVERSITY GROVE Gracious and Spacious 4 Bedroom plus Study Classic Colonial located at 2279 W. Hoyt! Main floor family room overlooking private rear yard plus Rec Room. Fpl. 1.5 baths. **\$239,900**

Peggy Sparr • 639-6383



Edina Realty

BUSINESS BANKING BONUS

A Special Offer

Now is the ideal time to review your business banking needs and take advantage of a great offer from First Bank.

Turn to us for great deals on:

- ✓ Checking Accounts
- ✓ Payroll Services
- ✓ WorldPerks® VISA® Business Card
- ✓ Merchant Bankcard Processing
- ✓ Overdraft Protection
- ✓ Loans
- ✓ Savings Accounts
- ✓ Automated Tax Payment Service

Hurry! Special offer good through September 30, 1994.



First Bank

Midway Office
2383 University Ave.
647-3500



OPEN YOUR DOOR TO YOUR NEIGHBORHOOD CHURCHES.

ON SATURDAY AND SUNDAY, OCTOBER 22 & 23, members of the neighborhood churches will be bringing Sunday School and worship information to your door. Please welcome them.

ST. ANTHONY PARK LUTHERAN CHURCH
2323 Como Ave. W., St. Paul 645-0371



Seniors

By Sheri Booms

Giving and receiving. Sometimes we're good at one and lousy at the other. Older adults are some of the best givers. They are tutors at school and committee members at church. They serve on civic boards and organize charity fundraisers. Together they are a volunteer work force to be reckoned with. Yet these same people can also be the worst receivers. Adept at lending a helping hand, they are reluctant to admit when they actually need one themselves. If you need a little work on your giving or your receiving, here are a few opportunities.

GIVING: The Retired and Senior Volunteer Program (RSVP) is a national program that helps people 55 years and older explore meaningful volunteer opportunities. This fall, the local RSVP is looking for seniors for Across Generations, a new project designed to meet the needs of at-risk children. This two-year project pairs seniors with teens to deliver safety and cultural diversity programs in St. Paul and Burnsville schools and St. Paul area churches. If you are interested in applying for this program, contact Jeri Lou Maus at 221-2820.

RSVP also has an urgent need for sturdy leftover fabric (1/2 yard minimum) and polyfill to make 300 bears for Safe Kids, a safety awareness program for children ages 5 to 10. RSVP is a co-sponsor of the program. If you can donate either of these items, contact Lois Boylan at 488-1645.

RECEIVING: Senior citizens on a fixed income know how difficult it can be to make ends

meet, especially when faced with costly prescriptions and medical bills. Sometimes the money barely stretches to buy groceries. The Nutrition Assistance Program for Seniors (NAPS) is a monthly supplemental food program for those 60 years and older who are on a tight budget. Run locally by Second Harvest St. Paul Food Bank, NAPS ensures that low-income seniors are able to obtain the foods they need to maintain a healthy diet.

Each month qualified seniors

go to their local NAPS site to receive a free package of non-perishable food, such as: evaporated or dry milk; canned fruits, vegetables and juice; canned meat; egg mix; beans; peanut butter; cereal; a choice of macaroni, rice or instant potatoes; butter and cornmeal. Seal Hi-Rise in South St. Anthony Park serves as the local distribution site.

For more information about the NAPS program or to see if you may qualify, call 484-8241.

Catch the Halloween Spirit!!

The Great Minnesota Pumpkin Patch

- Affordable handmade costumes for all ages
- Accessories & Make-up
- Pumpkins Galore
- Decorations
- Call for details on our Special Activity Weekends. An Amazing Maze for kids October 1-2 & October 20-23



An Amazing Maze

September 17 - October 31

Weekdays:

10 am - 7 pm

Weekends:

10 am - 6 pm

In the Leben's Florist Building
1021 Larpenteur Ave. West
St. Paul, MN • 488-5970



COMO RAYMOND AMOCO

2102 Como Avenue at Raymond • 646-2466

JAL AMOCO

2421 Larpenteur at Eustis • 645-5971



Gas open 24 hours
Mechanics on duty 7 a.m.-11 p.m.



Charter rates are available for sunny winter destinations. Plan now for your winter escape.

Ft. MEYERS, GRAND CAYMAN, CANCUN

OMEGA TRAVEL

2300 Como Ave. at Doswell

646-8855

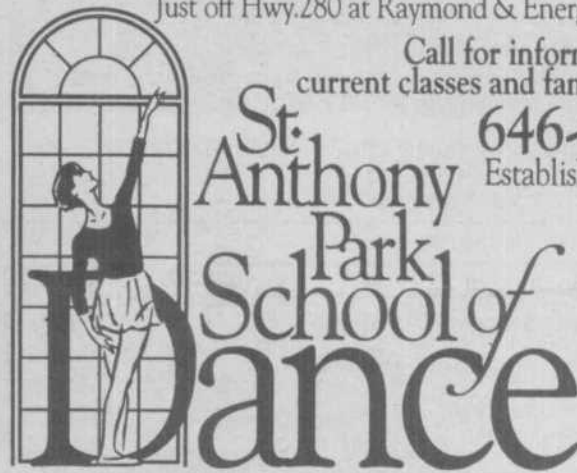


Quality Education In A Wholesome Environment For Ages 2 through Adult.

Conveniently located between Mpls. & St. Paul
Just off Hwy. 280 at Raymond & Energy Park Dr.

Call for information on current classes and family rates.

646-0502
Established 1982.



642-1838 BARGAIN UPHOLSTERY

Call for free estimate
797 Raymond at University

ST. ANTHONY PARK HEALTH CARE PROFESSIONALS

Bjorndahl & Dodds, Family Dentistry
2282 Como Avenue, 646-1123

St. Anthony Park Block Nurse Program, 642-9052
Helping Older Neighbors Live at Home

Todd Grossmann, 644-3685 and Paul Kirkegaard, 644-9216
Family Dentistry, 2278 Como Ave.

River City Mental Health Clinic
2265 Como Ave., 646-8985

Como Chiropractic Health Center
1884 Como Ave., 645-8393

Raymond Gerst DDS
2301 Como, 644-2757

St. Anthony Park Home, 2237 Commonwealth, 646-7486
A Minnesota Nursing Facility



NOW OPEN • NOW OPEN • NOW OPEN • NOW OPEN • NOW OPEN



SPORTS GRILL & NIGHTCLUB

2554 Como Avenue • St. Paul, MN 55108

HAPPY HOUR DAILY • FREE HUNGRY HOUR BUFFET 4-6

WEEKLY SPECIALS 4-11

MEXICAN MONDAY
Trio Enchilada \$4.99

WEDNESDAY BEER
BUST PARTY
\$3.99 all the pizza and tappers you care to eat or drink

FRIDAY ALL YOU CAN
EAT WALLEYE \$4.99

SUNDAY TAILGATE PARTY 12-3
1lb. HOT WINGS 99¢ • BALL PARK FRANKS
• BLOODY MARY BAR \$3.99

SUNDAY SPAGHETTI FEED
ALL YOU CAN EAT
\$3.99

2 FOR 1 TUESDAY
Buy one get one FREE entrees of equal or lesser value

THURSDAY GREAT
16 oz. SIRLOIN STEAK
mashed potatoes, gravy, corn on the cob \$6.95

SATURDAY
PRIME RIB DINNER
\$6.95

BANQUET ROOM
AVAILABLE
Private Parties, Weddings
Fraternal/Sororities

NOW OPEN • NOW OPEN • NOW OPEN • NOW OPEN • NOW OPEN

Ann McCormick's Hair Styling Salon



Tuesday-Saturday
by appointment **644-3926**
1540 Fulham, St. Paul (in St. Anthony Park)



LUTHER SEMINARY

2481 Como Ave., St. Paul

Maakestad Art on Exhibit

An exhibition of landscape paintings by Minnesota artist Tom Maakestad. *Olson Campus Center*

Oct. 5 Convocation

Wendell Frerichs, professor of Old Testament, "Another Thing the Bible Is Good For: Praying." 1:10 p.m., *Chapel of the Incarnation*

Oct. 24 Burgess Lecture Features Pelikan

Jaroslav Pelikan, Sterling Professor of History at Yale, speaks on "Russian Roots of the American Spirit: Reflections on the Bicentennial of Eastern Orthodoxy in North America." Co-sponsored by the Global Mission Institute at Luther Seminary as one of the Burgess Lectures. 10:00 a.m., *Chapel of the Incarnation*.

Oct. 28-29 Annual Song Fest

FRIDAY, 5:30 p.m. Danish Smorgasbord, *Olson Campus Center*, \$12.50. 7:30 p.m. Free concert, *Olson Campus Center*. SATURDAY, 8:30 a.m. Conference: "Memory and Renewal." (lecture followed by workshops). 1:30 p.m. Children's fest. 4:00 p.m. Family worship service. 7:30 p.m. Songfest HymnSing, *Central Lutheran Church, Minneapolis*, \$5.00 general admission.

Oct. 30 "Singing the Faith"

Reformation service focusing on Confession and the Lord's Supper, 7:00 p.m., *Chapel of the Incarnation*.

For more information: Public Relations Office 612 641-3520. Luther Seminary "Welcome Line" 612 641-3533.



Bugle Neighborhoods

ST. ANTHONY PARK

Octoberfest at Milton Square

On Sat., Oct. 1, the Milton Square merchants will host their annual Octoberfest from 10 a.m. to 5 p.m. at Como and Carter Avenues. This 7th annual event is scheduled "in appreciation and to thank you for your patronage."

Scheduled activities include an appearance by the historic Tartan Clan bagpipers, free carriage rides from noon to 5 p.m., Micawber's treasure book hunt, a pumpkin hunt, free face painting, food, and produce from Bob's Produce Ranch. There will be carts to lease if you have an idea or item/product to sell. Call Mary Ann Milton at 644-5113.

Wear your favorite costume and register for a prize.

Others to call for information: Dr. Paul Kirkegaard, 644-9216; Suzanne Fantle (Gustafson Jewelers), 645-6774; Norton Stillman or Mary Lowe (Micawber's), 646-5506.

Country Festival

A Country Festival will be held on Sat., Oct. 29, from 9:30 a.m. to 7:30 p.m., at St. Anthony Park United Methodist Church, Hillside and Como Avenues. Featured will be a gift and crafts boutique, a farmer's market, a country kitchen, an indoor garage sale, an international exhibit from 1 to 3 p.m.; and a new children's fun time from

1:30 to 3 p.m.

Lunch and dinner will be served. Call the church, 646-4859, for reservations.

Child care will be available from 10 a.m. to 7:30 p.m.

Clovio bazaar

Since 1962, the alumnae of the Clovia sorority have held their popular bazaar on the St. Paul Campus of the University of Minnesota. The every-other-year event displays contributions from alumnae from all parts of the country.

The event will fill the second floor Student Center Ballroom with handcrafted items on Fri., Oct. 21, from 10 a.m. to 7 p.m. and Sat., Oct. 22 from 10 a.m. to noon. Friday shoppers can ride a shuttle bus from the State Fair parking lot.

This fundraising event has items for sale in six booths: the Clovia Kitchen; the Holiday Shop; the Home Area, with hand-woven rugs, placemats and accessories; Etc., which sells greeting cards and gift novelties; Tot Shop for kids; Imports, featuring contributions from members living abroad; and Nature Crafts.

There is no admission charge.

Grief, loss workshops

St. Anthony Park United Church of Christ will offer two workshops on grief and loss this fall.

"Windows: Healing and Helping Through Loss," will help participants cope with life passages—such as death of a loved one, divorce, relocation, retirement or job loss—and learn to help others going through difficult times. The workshop will be held on Sat., Oct. 15, from 8:30 a.m. to 4:30 p.m. Sharon Creamer, a school counselor, will be the facilitator. For additional information, call Creamer at 645-9902.

"Loss of Dreams" will explore an often overlooked source of grief—loss of the imagined future for relationships, family, careers and other important facets of life. This workshop will be held at the church on Sat., Nov. 5, from 9:30 a.m. to 2 p.m. Ted Bowman, family educator and noted speaker on grief and loss, is the facilitator. For more information, call Bowman at 645-1836.

Langford Park Rec Center

Registration for youth hockey will be held from Oct. 3 to 21. Boys and girls ages 7-13 may register.

Registration for youth basketball will be held from Oct. 17 to Nov. 4. Boys and girls ages 5-14 may register.

Upcoming special activities sponsored by Langford Park include a trip to the Science Museum and Omni Theater on Oct. 21, and a trip to the "Hillside of Horrors" at Highland Park Pavilion on Oct. 27.

Children ages 12 and under are invited to make a stop at Langford while trick-or-treating on Halloween night, Oct. 31. Activities (about 20 minutes in length) will include a Halloween craft, a food prep activity, games and treats. Drop in between 6 and 8 p.m.

For more information about sports registration or activities, call Langford at 298-5765.

Youth theatre classes

SteppingStone Theatre for Youth Development is beginning its 8th year, with Saturday classes and workshops at Murray Junior High, 2200 Buford Ave. Acting, dance, comedy, playwriting and art classes are available for children ages 3 to 18, beginning Oct. 8 and running for six weeks. Call Matthew Vaky, Director of Education, 225-9265, for more information.

Fling into fall

St. Matthew's Episcopal Church will hold its annual Fall Fling at the church, 2136 Carter Ave., on Fri., Oct. 14, beginning at 6 p.m. There will be a dinner, followed by folk dancing for all ages. A drawing for door prizes contributed by neighborhood merchants also will be featured. Call 645-3058 for more information.

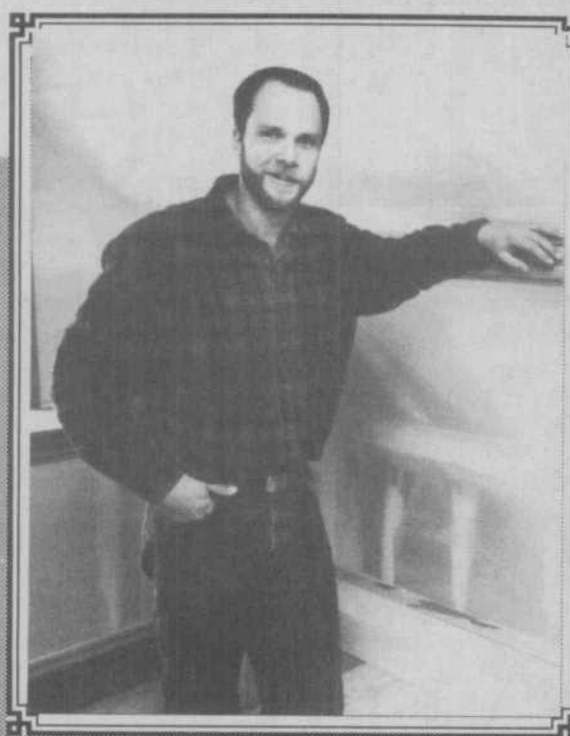
South St. Anthony Rec Center

Sign up now for fall classes and events at South St. Anthony Rec Center. New this year are elementary cooking/crafts on Wednesdays from 5-6 p.m. (5 sessions, \$3); and teen night every Tuesday from 6:30 to 8 p.m.

Other classes include gym games on Wednesdays from 4 to 5 p.m., and physical conditioning on Mondays, 4 to 5 p.m., for ages 13 and older.

On Halloween, Mon., Oct. 31, the recreation center will be open from 5 to 8 p.m. as a safe house. Stop by for a treat.

For more information call 298-5770, Mon.-Thurs., 4-8 p.m., or Fri., 9:30-noon.



The response to my ad in the Bugle has been very positive. It's a well-written and well-read publication, and the only place I advertise. The people who call from the ad are qualified customers. Please renew my contract for another year.

Ben Quie
Tectone Construction

Bugle Ads Work

For more information about advertising call one of our representatives:

Kathy Magnuson 645-2475
Serving St. Anthony Park, Lauderdale and Falcon Heights

Rachel Larson 644-5188
Serving Como Park and other areas.

BAG SOME BARGAINS

Now 3 titles to choose from each month

This month's specials:

Taltos	
by Anne Rice	
Retail \$25.00	Your price \$18.75
with Micawbers canvas bag	
Embraced by the Light	
by Betty J. Eadie	
Retail \$5.99	Your price \$4.49
with Micawbers canvas bag	
Town Mouse, Country Mouse	
by Jan Brett	
Retail \$15.95	Your price \$11.96
with Micawbers canvas bag	

That's an additional 15% off

Micawbers Bag Discount

MICAWBER'S BOOKSTORE

2238 Carter Ave. in Milton Square • 646-5506
Mon.-Fri. 10-8, Sat. 9:30-5:30, Sun. 11:30-5
We special order - no charge!

Community Calendar

OCTOBER

1 Sat.

Octoberfest, Milton Square, 10 a.m.-5 p.m.

2 Sun.

Harvest Festival, Gibbs Farm Museum, Cleveland at Larpenteur Avenues, noon-4 p.m.

3 Mon.

Library addition planning committee, St. Anthony Park Library, 3 p.m.

AA, St. Anthony Park Lutheran Church, 8 p.m. Call 647-9446 or 770-2646. Every Mon.

4 Tues.

Toastmasters, Hewlett Packard, 2025 W. Larpenteur, 7:30 a.m. Call Don Arndt, 641-9525. Every Tues.

Community meeting on proposed liquor license in Milton Square, St. Anthony Park Library, 7 p.m.

5 Wed.

Leisure Center, St. Anthony Park United Methodist Church, 10 a.m. Every Wednesday.

Parent-child play group, South St. Anthony Recreation Center, 890 Cromwell Ave., 10-11:30 a.m. Call 646-6986. Every Wed.

Bookmobile at Hamline & Hoyt, 12:30-5:30 p.m. Also Wed., Oct. 19.

6 Thurs.

St. Anthony Park Community Council Physical Planning Committee, South St. Anthony Rec Center, 890 Cromwell, 5 p.m.

Fall Rummage Sale, Lyngblomsten Care Center Community Room, 1415 Almond Ave., 9 a.m.-2 p.m. Also Fri., Oct. 7.

7 Fri.

Falcon Heights/Lauderdale recycling day.

Bookmobile at Seal Hi-Rise, 11 a.m.-noon. Also Fri., Oct. 21.

Youth Activity Night begins for grades 6-12, St. Anthony Park United Methodist Church, 2200 Hillside at Como, 7-11 p.m. Every Friday.

9 Sun.

Cooking Day, Gibbs Farm Museum, Cleveland at Larpenteur Avenues, noon-4 p.m.

10 Mon.

Como Park recycling day.

Falconeers Senior Club, Falcon Heights City Hall, 1-3:30 p.m. Call 488-3361 or 644-0055.

11 Tues.

St. Anthony Park Association, St. Anthony Park United Methodist Church, Como at Hillside. Social hour: 5:45 p.m.; dinner: 6:15 p.m.; program 7 p.m.

Lauderdale City Council, City Hall, 1891 Walnut, 7:30 p.m.

Falcon Heights Human Rights Commission, Falcon Heights City Hall, 7 p.m.

12 Wed.

St. Anthony Park recycling day and food shelf pickup.

Falcon Heights City Council, City Hall, 7 p.m.

St. Anthony Park Community Council, St. Anthony Park Library, 2245 Como Ave., 7 p.m.

14 Fri.

Bazaar, bake sale and meat loaf dinner, Como Park Lutheran Church, 1376 Hoyt Ave., 2-8:30 p.m.

Fall Fling, St. Matthew's Episcopal Church, 2136 Carter Ave., 6 p.m.

15 Sat.

Lauderdale 500 Club, Lauderdale City Hall, 1891 Walnut St., 1 p.m.

Falcon Heights Fire Department Open House, 10 a.m.-2 p.m.

Contradancing, Oddfellows Hall, 2380 Hampden, 8 p.m. Call 642-9118.

16 Sun.

Corn Husk Doll Day, Gibbs Farm Museum, Cleveland at Larpenteur Avenues, noon-4 p.m.

Park Press Inc. annual meeting, St. Anthony Park Library, 3-5 p.m.

18 Tues.

District 10 Community Council, Como Park Lutheran Church, 7 p.m.

19 Wed.

Block Nurse Program, Inc. board of directors, Park Bank, 2265 Como, 4-6 p.m. Call 339-7774.

Langford Booster Club, Langford Park, 7:30 p.m.

20 Thurs.

No classes for students, St. Paul Public & Roseville Area Schools. State Teachers' Meetings. Also Oct. 21

Midway-Highland Chapter 930, American Association of Retired Persons, Lyngblomsten Senior Center, 1415 Almond Ave., 1 p.m.

21 Fri.

Falcon Heights/Lauderdale recycling day.

Beta of Clovia Bazaar, North Star Ballroom, 2nd floor, St. Paul Campus Student Center, 10 a.m.-7 p.m. Also Sat., Oct. 22, 10 a.m.-1 p.m.

All Hallows Eve tours, Gibbs Farm Museum, Cleveland at Larpenteur Avenues, 6:30 p.m. Also Oct. 22, 28 & 29.

22 Sat.

Fare SHARE distribution and registration for November, Holy Childhood Church, 10 a.m.-noon. Call 644-7495.

Como Zoo Boo, 5:30-8:30 p.m. Also Oct. 23, 24, 29 & 30.

23 Sun.

"Halloween Traditions," Gibbs Farm Museum, Cleveland at Larpenteur Avenues, noon-4 p.m.

24 Mon.

Como Park recycling day.

Falconeers Senior Club, Falcon Heights City Hall, 1-3:30 p.m. Call 488-3361 or 644-0055.

25 Tues.

Lauderdale City Council, City Hall, 1891 Walnut, 7:30 p.m.

26 Wed.

St. Anthony Park recycling day.

St. Anthony Park Community Council Housing & Human Services Committee, South St. Anthony Rec. Center, 890 Cromwell, 5 p.m.

St. Anthony Park Community Council Environment Committee, South St. Anthony Rec. Center, 890 Cromwell, 7 p.m.

Falcon Heights City Council, City Hall, 7 p.m.

27 Thurs.

Moms Club, Como Park Lutheran Church, 10 a.m.

Open House, The Heritage at Lyngblomsten, 1440 Midway Parkway, 3-7 p.m.

Turn Off the Violence programs, Langford Park, 6:30-8:30 p.m. Call 292-7884.

29 Sat.

Country Festival, St. Anthony Park United Methodist Church, 9:30 a.m.-7:30 p.m.

Beef Dinner, Peace Lutheran Church, Lauderdale, 5-7 p.m.

30 Sun.

Candlemaking Day, Gibbs Farm Museum, Cleveland at Larpenteur Avenues, noon-4 p.m.

31 Mon.

Halloween activities for children, Langford Park, 6-8 p.m.; South St. Anthony Rec Center, 5-8 p.m.; Northwest Como Rec Center, 6-8 p.m.

Items for the November Community Calendar must be submitted to the Bugle office by 6 p.m. Mon., October 17.

The Community Calendar is sponsored monthly by

Wellington

MANAGEMENT, INC.

Serving the community's needs in

- Office and Retail Space Leasing
- Property Management
- Investment Real Estate

292-9844

Burton's Rain Gutter Service

- Patch • Repair • Install
- Rainleader Disconnects • Chimney Caps

Licensed • Bonded • Insured

Serving area since 1973

Burton R. Johnson 699-8900



CONCRETE SIDEWALKS, STEPS, ETC.

Chimney and Fireplace Work -
Also Chimney Cleaning
Plastering, Stucco and Sandblasting

CALL MARK A. LARSON 642-5090

30 Years in Business

15th Annual Hometown Bazaar

Sat., October 29
10 am - 3 pm

Bake sale, crafts, kids' clothes,
quilt raffle, books, household,
luncheon

St. Michael's Lutheran Church
1660 W. Cty Rd B, Roseville

Obituaries

Patrick Green

The Reverend Patrick G. Green, pastor of St. Anthony Park United Church of Christ, died suddenly on Aug. 21, 1994, at the age of 46. After dying in his sleep of an apparent heart attack, he was found by members of his congregation when he did not appear for Sunday morning service.

A native of Ohio, Green received his doctorate of divinity from the Andover Newton Theological School in Newton, Mass.

Green served churches in Birmingham, Alabama, where he was active in the civil rights movement, even having been jailed for his efforts. After serving churches in Concord and Milton, Mass., he came to St. Anthony Park seven years ago.

According to Marge Grahm Bowman, a parishioner, a "stunning number of people felt very 'pastored' by Patrick Green, particularly in times of crisis, illness or death in the family." He was noted for his thoughtfulness in expressing appreciation to members of the congrega-

tion, both verbally and through hand-written notes.

Green had initiated a "Faith and Fiction" book club that studied the spiritual aspects of fictional writings, both modern and classic. Members included other residents of the community, as well as those in the congregation, and they plan to continue the group. Green's interests also included jazz, Cajun food, fly fishing and baseball.

Survivors include his children, David, 9, and Ellen, 7; his father, Dr. Garland Green of Perrysburg, Ohio; stepmother, Gloria Green; and sister Kerry Zobor of Budapest, Hungary.

Carol Haff

Carol Rose Klein Haff died on Sept. 5, 1994, after five months of illness with a brain tumor. Haff had worked for Miller Pharmacy for over 30 years and lived in St. Anthony Park for many years. Prior to that, her home was in Lauderdale.

Haff is remembered for her helpful, friendly service at Miller Pharmacy. She trained many young people in the community in their first job there. Her husband Allan Haff is a carpenter in the community.

Besides her husband, Haff is survived by her daughters, Naomi Cone and Becky Westphal; her brothers, Richard and Norman Rose; her sisters, Mary Kiekhafer, Jan Rose and Shirley McKelvey; and six grandchildren.

Funeral services were held at the Colfax Lutheran Church in Colfax, Wis., on Sept. 8.

Florence Metzger

Florence L. Metzger died at the age of 96 on Aug. 21, 1994. A longtime Como Park area resident, she had lived recently at St. Anthony Park Home. She was a member of Warrendale Presbyterian Church.

Metzger was preceded in death by her husband, Robert Metzger, and her son, Donald Metzger. Survivors include her son, Robert Metzger, Jr., of Roseville; daughter-in-law, Dorothy Metzger; three grandchildren, Bill Metzger, Barb Prihoda and Jo Biebighauser; six great-grandchildren; a sister, Mabel Hansen; and a brother, Frank Taylor.

Maxine Narvaez

Maxine L. Narvaez died on Aug. 24, 1994, at the age of 72, after a long illness with cancer. She had lived in St. Anthony Park for over 40 years.

Born on a farm near Elgin, Minn., she was a journalism graduate of the University of Missouri. Narvaez became a

reporter for the Minneapolis Star, then a writer and editor of *The Torch*, a Lutheran Layman's League publication.

One of the original Minneapolis Community Research Volunteers, she served there for over 25 years. She was a congregational leader of Jehovah, King of Kings, Peace, and North Heights Lutheran Churches.

Narvaez was preceded in death by her husband, Richard, a professor of Spanish at the University of Minnesota. She is survived by two sons, Leon Narvaez of Northfield and Eric Narvaez of St. Paul; two daughters, Darcia Narvaez and Nona Narvaez, both of St. Paul; four grandchildren, Rick, Benjamin, Christina and David; a sister, Eileen Richardson and a brother, Glenn Zabel, both of Elgin.

Helen Reber

Helen L. Reber, a resident of Falcon Heights, died on Sept. 11, 1994. She was 90 years old.

Reber was a member of the Guild of Catholic Women and a former active participant of the Women's Council at Holy Childhood Catholic Church.

She was preceded in death by her husband, Joseph Reber, and her brothers, Herbert, Robert and Frank Linhoff. Survivors include sons William Reber of St. Paul, Robert Reber of Eden Prairie; a daughter, Jacqueline Winbiger of Northridge, Calif.;

eight grandchildren; and six great-grandchildren.

Robert Rudd

Robert L. Rudd, age 71, died on Sept. 9, 1994. He had lived in Falcon Heights for 38 years. Rudd was born in Yancyville, North Carolina. He served in World War II. He patented several inventions, among them Tectum, a ceiling tile that covers the gathering area in his church, Corpus Christi Catholic. He sold Tectum and other products for Structural Wood. His hobbies included teaching golf for Bullseye. He was a volunteer at Hampden Park Co-op.

Rudd is survived by his wife, Phyllis Rudd of Falcon Heights; a daughter, Cindy Hinman of Lino Lakes; two sons, Gregory Rudd of Seattle and Jeffrey Rudd of Anchorage; two granddaughters, Nicole and Allison Hinman; a brother, Melvin Rudd of Greensboro, North Carolina; and a brother-in-law, Blaise Stachowiak of St. Paul.

Michael Uram

Michael Uram died on Sept. 15, 1994, at the age of 81. He had been a resident of St. Anthony Park for over 40 years.

Uram was a longtime teacher at Breck School and taught many young people in St. Anthony Park how to drive. He was a member of First Baptist Church in Minneapolis.

He is survived by his wife of 55 years, Marian Uram; his daughters, Diane Olsen of Tallahassee, Fla., Nancy Geske of Glen Ellyn, Ill., and Barbara Abeler of Anoka; nine grandchildren, Darin Olsen; David, Dean and Kari Geske; Jamie, Jesse, Jordan, Josiah and Jude Abeler; two sisters, Anne Uram and Mary Ann Uram; and two brothers, Frank and George Uram.

Compiled by Ann Bulger

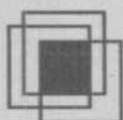
TAN LINE

NEW
BULBS!



**1 Free Session with
any package purchased
and ask about our early bird specials
1658 N. Snelling at Larpenteur
644-1137**

Not valid with any other offers. Expires 10/31/94



SENIORS - WANT HELP AT HOME?

With chores or errands...homemaking...
foot care...personal care...health care?

Call 642-9052 and tell us what you need

St. Anthony Park Block Nurse Program
A Living At Home/Block Nurse Program

Serving persons 65+ in St. Anthony Park,
1666 Coffman, University Grove & 1500 block of Fulham

Falcon Bowl

1550 West Larpenteur at Snelling

645-5595

SENIORS (55+)

Join us for discounted bowling:
Tuesday 9:30 am - 3:30 pm
50¢/line

otherwise, we offer a special rate for those 62 years of age and greater-just \$1.00 a line anytime there is open play.

**FREE GAME OF BOWLING
WITH THIS AD**

SCOOTERS

AFFORDABLE PRICES STARTING AT
\$1,995.00
(BATTERIES INCLUDED)

**ENHANCE YOUR LIFESTYLE
WITH AFFORDABLE SCOOTERS**

No prepay required
when we bill your
insurer:

Medical Assistance
Medicare
Blue Cross/Shield
Other private
insurance



We accept:

VISA
MasterCard
Discover
Personal Checks

HANDI MEDICAL SUPPLY, INC.



(Located on University at Hwy 280)
2505 University Avenue West
St. Paul, Minnesota 55114
(612) 644-9770

Bring in this ad for an additional \$25 off your SCOOTER



**BREAST
CANCER
SURVIVORS...
CHEER!!!**

**FINALLY, QUALITY
MASTECTOMY PRODUCTS,
SPECIALIZED SERVICES, AND
THE MOST COMPETITIVE
PRICES IN TOWN**

- Home Fittings (serving the Twin Cities Metro Area)
- Rental Program (try the new self-adhesive breast form)
- Insurance and Medicare Billing (no prepay required)
- Four Certified Fitters (appointments and walk-ins welcome)
- Custom Bra Fittings (Cameo and Figurette)
- Free UPS Delivery

HANDI MEDICAL SUPPLY, INC.

(Located on University at Hwy 280)
2505 University Avenue West
St. Paul, Minnesota 55114
(612) 644-9770

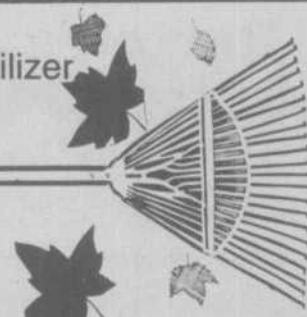
Bring in this ad for
20% off all in-stock bras

FALL MEANS

Rakes, Bags, Compost Bins, Bulb and Lawn Fertilizer
Shredder rental - reduce your leaves by 8 to 1!

PARK HANK

Your "First and Only Stop" Store
2290 Como Ave. • 644-1695
Monday-Friday 8:00-7:00; Saturday 8:00-5:00
Sunday 11:00-4:00



Classified deadline:
October 17, 6 p.m.
Next issue: October 27

- Type your ad.
- Count the words. A word is numbers or letters with a space on each side. A phone number is 1 word.
- Figure your cost: 35¢ x number of words (\$3.50 minimum).
- Send your ad & check to Bugle Classifieds P.O. Box 8126 St. Paul, MN 55108 or deliver to the drop box at the rear of the Bugle office at 2301 Como Ave. by 6 p.m. on deadline day.
- Classified ads are not taken over the phone.
- Call Wendy Hanson, 636-2867, or the Bugle office, 646-5369, with questions.

Employment

BRUEGGER'S FRESH BAGEL BAKERY is now accepting applications for full-time or part-time shift managers and counter people. We will work around your schedule. Students, retirees and homemakers are encouraged to apply. If you're friendly, reliable and want to be part of a winning team, please apply. Great environment: grease-free, alcohol-free & smoke-free workplace! Top dollar paid for performance. Great Opportunities! St Paul Campus: St Anthony Park 2233 Energy Park Drive.

ADMINISTRATIVE ASSISTANT: Experience in general office skills, including typing is needed. 40 flexible hours per week are available starting now. Contact: George K. Granse, 1810 Como Ave., St. Paul, MN 55108; 612-645-0591.

WORK WANTED: Certified Private Home Health Aide Team. Seeking hourly or live-in care. Honest, dependable with excellent references. 552-8535.

BANKING: Part-time teller, approximately 20-30 hours per week. Candidates will need excellent interpersonal skills, accurate cash handling skills plus ability to work a flexible schedule. Previous retail or customer service experience required. Excellent benefits and community bank work environment. Send resume to Personnel Dept., St. Anthony Park State Bank, 2265 Como Ave., St. Paul, MN 55108. 647-0131. E.O.E.

INVENTORY CONTROL CLERK. Midway employer has opportunity for dependable person with a minimum of 6 months data entry or CRT experience to work in a computerized purchasing/IC dept. Must be able to work under pressure and handle frequent interruptions. Requires accuracy and attention to detail. Apply in person, send resume or call 645-9301. Ernie Costello, Olson Graphic Products, 2446 University Ave., St. Paul, MN 55114. AA/EOE.

Freebies

The Bugle doesn't charge for your ad to give away an item.

FREE: 4' high packing barrels. 645-3869.

FREE: Hand tame cockatiel w/cage. 649-1906.

FREE: Wooden army barracks bed with mattress. 646-1769.

FREE: Rust colored recliner chair. Call 646-1769.

FREE: More than 400 black (dark gray) used patio blocks, 15 1/2" by 7 3/4" by 1 3/4". Take all, or as many as you can use. Call 645-2976.

Home Services

PAINTING PLUS. Interior, exterior painting and staining. Specializing in spray textured ceilings. Free estimates. 646-8230

LARRY'S PAINTING. Exterior, interior, spray ceilings, texture ceilings, drywall, paper hanging. Free estimates. 222-4227.

SASH CORDS replaced. 698-3156. Tom Oberg.

HANDYMAN will do all the little jobs that no one else wants. 642-9985.

REMODELING, ALL TYPES: carpentry and home repairs, kitchen and old house specialist. References. Licensed, bonded and insured. Call Mark for estimates. 488-6625.

HOUSECLEANING. Quality work at reasonable rates. 293-1105, Kathy.

SCHUFMAN BROS. QUALITY PAINTING, interior/exterior, textured ceilings and water damage repairs, professional service at affordable rates, local references, free estimates, insured; Jonathan, 698-6151; 645-5119 after 5.

CREATIVE DESIGN/CONTRACTING. Planning additions/renovations? Reasonable rates, Rand Claussen design, 647-1139.

LaVALLE PAINTING. Interior and exterior painting, patching, texturing, reasonable, prompt and professional. Insured, references. 483-9634.

HOME REPAIR. Expert carpentry, remodeling, additions, door and window replacement. Tom Oberg. 698-3156.

CALL SWISS GARDENS for attentive fall garden maintenance. 642-9985.

FURNITURE RESTORATION: Refinishing, stripping, repair, reglue, veneer repair, and hand/machine cane. Call Dale 644-9564.

WE SATISFY ALL YOUR PAINTING NEEDS. Professional painting, interior, exterior, paper-hanging, patching, taping, staining, ceiling spray, texturing. Water damage repair, and more. Family business in the Park—40 years. Jim Larson, 644-5188.

GENERAL CONTRACTOR with old house experience. Repairs, replacements, additions of windows, doors, decks, roofs, etc. Kitchens, baths, and family rooms. Local neighborhood references are available. Call Terry 771-1268.

HILLIARD E. SMITH general contractor. Carpentry work, block, stone, cement work. Interior, exterior remodeling, insulation, underpinning porches. 46 years in the Park. Small jobs are our specialty. Licensed, bonded, insured. 644-0715.

WE SPECIALIZE IN TRIM PAINTING. Bob Finn, 488-2761.

LAVENDER MAID. A quality, reliable housecleaning service with affordable rates. Free estimate, 724-0342.

CLEANING: Established business. Thorough, honest, reasonable and St.A.P. resident 6 years. Mary 646-1363.

WALLPAPER HANGING, painting and preparation. D.J. Bellandi, 483-0419.

ROTTEN WINDOW sills & trim replaced. Tom Oberg. 698-3156.

HOUSECLEANING. Also pet and house sitting. 642-9848.

PRUNING. Shrubs, hedges and small trees expertly pruned. 30 years' experience. Call Swiss Gardens at 642-9985.

PROFESSIONAL ORGANIZING: Home, office, basement, attic, garage, anything, anywhere. Call Meg Miller for brochure. (612) 222-2665.

EXTERIOR AND INTERIOR PAINTING! Specializing in textured ceilings, interior painting, ceiling and wall repair, paper hanging and removal, and water damage. Ron Wentz, 771-1765.

Instruction

PERFORMANCE ASSOCIATES UNLIMITED. Voice and piano lessons. Individual and group instruction to meet your needs. 487-0362.

GUITAR LESSONS by experienced instructor. Classical and jazz. Call 649-0114.

VOICE LESSONS. Improve your singing skills and learn how to care for your voice. Lone Boettcher Butler, M.M., M.Div. 644-6827.

MUSIC INSTRUCTION: Suzuki/traditional piano and flute lessons available through school year for ages 6 and up. Instructor experienced in music therapy, theory and all aspects of musicianship. Reasonable rates b/c of many long-term students. Call Sheila at 645-4607.

EXPERIENCED PIANO INSTRUCTION in St. Anthony Park: Beginners-intermediate. Call now for fall schedule. Joanna Krinke. 644-3449.

Notices

OFFICE AVAILABLE in suite with another office, playroom, waiting room, and kitchen/ workroom. Excellent support staff, computer, fax, copier, etc. Lovely building in area easily accessible by bus or car and free parking. Terms negotiable. Call Susan Phipps-Yonas, Ph.D. (612) 645-1923.

SHOW AND SALE: watercolor art by Margaret "Peg" Houck and fall/winter floral designs for home/office by Penny Chally of Unique Designs. Come Thursday, October 27, 3-8 and Sunday October 30, 3-8 at 2184 Carter Avenue, St. Anthony Park.

Housing

FOR SALE: Only \$41,900. This cute little cottage has one bedroom and a huge yard. Open Sun., Oct. 2, 1-3 p.m. 1821 Eustis St., Linda. 728-2203.

FOR SALE: 2385 Buford Ave. Newly furnished 2 bedroom home with remodeled kitchen and basement, all appliances, hardwood floors, garage. \$84,900. Sue Wruck/ Eagle Realty 593-9626 or 757-2762.

FOR SALE: Popular Brandy Chase Manor home, main level, no steps. One bedroom, fireplace, central air, appliances including washer and dryer. Great location next to University golf course and on campus bus line. \$48,900. Donna Anfinson, CRS, 633-0061 or 645-5581, Century 21 Jay Blank Realty.

FOR SALE: Spacious Midland Grove two bedroom, two bath condo. Convenient location on Cleveland and County Road B. Peaceful wooded view from two balconies. Brick fireplace and central air. Indoor pool, sauna, exercise and party room. Tennis and racquetball courts. Underground heated parking. Low \$60's. Donna Anfinson, CRS, 633-0061 or 645-5581, Century 21 Jay Blank Realty.

FOR SALE: 1469 Albany Ave., near Como and Snelling. Charming brick bungalow, great starter or retirement home. Convenient to Como Park, University and bus service. \$57,900. Donna Anfinson, CRS, Century 21 Jay Blank Realty, 633-0061 or 645-5581.

FOR SALE: Luther Place condo. One bedroom, den. 644-9810.

BUYING OR SELLING: Call a Certified Residential Specialist with 24 years' experience. Lauderdale resident. Donna Anfinson, CRS, Century 21 Jay Blank Realty, 633-0061 or 645-5581.

Professional Services

PASSPORT PHOTOS—\$7.50. International Institute, 1694 Como Ave. Hours Mon.-Fri. 9 a.m.-4:30 p.m.

SWISS GARDENS. an old-world approach to the art of distinctive landscape design and installation. Call Philippe at 642-9985 for a free consultation.

HARPIST. Cathy Salovich Vectorsen. Beautiful music for any occasion. 644-7016.

LICENSED MARRIAGE AND FAMILY THERAPIST specializing in marital and child problems. Experienced in brief therapy. Sliding scale fees. George Vognar. 642-9565.

PIANO TUNING AND REPAIR. MacPhail certified. Call Dorothy Tostengard, 631-2991.

COMPANION/AIDE. Flexible hours. Experienced, good references. 642-9848.

EXPERIENCED EDUCATOR AND PSYCHOTHERAPIST; specialty areas include eating disorders; licensed psychologist. For information or appt., call 646-6719.

Wanted

WANTED: BEFORE THE SNOW FLIES: Do you have a garage to rent in the Hillside/Knapp area? Call Judy, 644-2992.

TOP CASH PAID. Older Furniture (All Types)—Also Rugs—Pictures—Frames—Clocks—Toys—Lamps—Glassware—Bronzes—Indian Items—Crocks—Stained Glass Windows—Mirrors—Quilts—Dolls—Neon Signs—Duck Decoys—Fishing Items—"ANYTHING OLD." Call 227-2469 Anytime!!!!

HELP! We need someone to clean our house on a regular basis, the way Mom used to (she did do windows). We'll pay top dollar. Please call 645-0921—h; 232-2133—w.

Child Care

LICENSED FAMILY CHILD CARE—Falcon Heights area. Openings for ages 2 years and up. Amy Jo (Jensen) Kuhens, 644-0085.

PERSONAL DAYCARE for your newborn in my home (Snelling & Larpenteur). Reliable, experienced, with references. 646-1383.

PARK ANGELS DAYCARE: Licensed by Ramsey County; four immediate openings, 1 1/2 blocks west of Speedy Market. 644-5516.

CHILD CARE NEEDED. Part-time for two 4-year-olds. Ten to twenty hrs/wk in our SAP home. 825-3850 for info.

For Sale

FOR SALE: Woodburning range, Queen Cook make, white porcelain enamel, \$500. 644-4740.

FOR SALE: Dinner set for 8 plus luncheon set for 12, \$75 and \$25. Electric shampoo/waxing/buffing machine, \$25. Electric hedge trimmer and electric lawnmower, \$15 each. Electric snow blower \$25. 644-6153.

FOR SALE: Whirlpool washer, heavy duty, excellent condition: 2 speed, 3 cycle. Whirlpool dryer, excellent condition: 5 cycle, 3 temperature. Call 642-0057.

FOR SALE: FLUTE—ARTLEY (Student). Good condition w/case, new pads. \$130. 644-2374.

FOR SALE: Antique dresser; antique rocking chair; very comfortable, large blue swivel chair (\$350 or b.o.). Call 646-6719.

ANTIQUES FOR SALE: Maple single bed, steamer trunk, small wooden bookcase, Shaker-style rocker, wash stand. Call 644-1650.

PROGRAM DIRECTOR

St. Anthony Park Block Nurse Program

Certified Public Health Nurse with home-care, administrative and supervisory experience needed for community-based program which provides home care and support services for neighbors 65+; part-time (12-15 hours/week). St. Anthony Park resident preferred; 644-8607, evenings. Deadline October 20th.

Music in the Park Series opens 16th season with Native American piece: *Circle of Faith*

The first in a series of chamber music concerts presented by the Music in the Park Series unites the heritage of both classical and Native American music. This collaborative performance kicking off Music in the Park's 16th season features Twin Cities-based Ensemble Capriccio, double bassist James VanDemark, traditional Native American music provided by The Boys, and Minnesota Native American actor Joseph Brown Thunder, Jr., on Sun., Oct. 9, at 4 p.m. at St. Anthony Park United Church of Christ, 2129 Commonwealth Ave.

The centerpiece of the program will be *Circle of Faith—The Words of Seattle*. The work combines music by Alton Howe Clingan with the authentic 1854 speech of Chief Seattle and features a string quintet, a Native American drumming and singing group and Native narrator. Seattle's words, in response to a land deal cut for his people by the governor of Washington territory, is a reflection on the common destiny of the races.

The work was commissioned and developed by VanDemark in conjunction with prominent

Native artists and elders.

In addition to *Circle of Faith*, the program will feature the Dvorak *String Quintet* and *Around Columbia*, a string trio evoking rural Missouri by Minnesota composer Randall Davidson.

Hailed as one of the world's foremost double bassists, VanDemark gave his solo debut with the Minnesota Orchestra at the age of 15. He has performed with the New York Philharmonic, St. Paul Chamber Orchestra, the Mostly Mozart Festival Orchestra and has made numerous other concerto appearances. Ensemble Capriccio is comprised of Minnesota Orchestra members Chouhei Min, violin; Korey Konkol, viola;

and Mina Fisher, cello; with guest artist Taichi Chen, violin.

Joseph Brown Thunder, Jr., has served as president of UNITY, the United Indian Tribal Youth Organization, and is an enrolled member of the Wisconsin Winnebago tribe.

The Boys, a Twin Cities-based traditional Native American drumming and singing group, is in great demand on the pow-wow circuit.

Season tickets for the six-concert series are \$54. Single tickets are \$12 (\$10 advance purchase). They may be purchased at The Bibelot Shop (646-5651) and Micawber's Bookstore (646-5506), or by calling 644-4234.

Perfectly framed



Photo by Truman Olson

Tim Smith, owner of the Carter Avenue Frame Shop, celebrated the opening of his new shop at 2186 Como Ave. with a ribbon-cutting on August 29. Smith moved in after extensive remodeling that added a wheelchair ramp, a landing and two off-street parking places. A billboard on top of the building was removed as well.

Life in the Church: Come and Share

BETHANY BAPTIST CHURCH

Skillman and Cleveland. 631-0211
Sunday School: 9:30 am. Bethany Baptist Morning
Worship 10:45 am. Filipino-American Worship 11:30 am
Pastor Bruce Petersen

COMO PARK LUTHERAN CHURCH

1376 Hoyt Ave. 646-7127 Handicap accessible
CPLContac Dial-A-Devotion 644-1897
8:30 and 11 am: Sunday Worship
9:30: Education Hour
Nursery Provided 8:15 - 12:15
Church van available for second service
Call by noon Fri for a ride
Communion first and third Sundays

CORPUS CHRISTI CATHOLIC CHURCH

2131 No. Fairview at County Road B. 639-8888
Meaningful liturgies in a new worship space.
A welcoming community. Handicap accessible
Saturday Mass: 5:00 pm
Sunday Masses: 8:30 and 10:30 am

MOUNT OLIVE EV. LUTHERAN CHURCH (A WELS Congregation)

"THE CHURCH WITH A SMILE"
1460 Almond at Pascal. 645-2575
Sunday Worship: 9 am
Sunday Education Hour: 10:30 am



PEACE LUTHERAN + LAUDERDALE

Walnut at lone. 644-5440
Sunday Worship: 10:30 am. Eucharist 1st and 3rd Sundays.
Sunday Church School: 9:15
Bible Studies: Tuesdays 10 am and Wednesdays 7 pm

ROSE HILL ALLIANCE CHURCH

Roselawn at Cleveland. 631-0173
Sunday School: 9:30 am
Sunday Church School: 10:45 am
Sundays 6 pm Sr. Hi Group
Wednesday Int'l. Women's American Culture Class 12:30 pm (Sept. - May)
Wednesday 6:45 pm conversational English class
Wednesdays Jr. Hi Group & Awana 6:45 pm (Sept. - May)

ST. ANTHONY PARK LUTHERAN

Como and Luther Place. Handicapped Accessible. 645-0371
Sunday Worship: 8:45 and 11 am. Nursery at both services.
Communion first and third Sunday
Sunday School 9:50 am
Sunday Adult Education
Oct. 2: Open Forum on Confirmation
Oct. 9: "Generation X - What's All the Fuss?" by Jerie Smith, Campus Minister at Luther Campus Ministry
Oct. 16 "The Changing Demographic Profile of the Twin Cities" by Ronal Krietemeyer, Office for Social Justice, Archdiocese of St. Paul and Minneapolis
Oct. 23 "Living with Alzheimer's Disease" by Julie Nygren, Director of Family Services, Alzheimer's Association and Rev. Bob and Lois Pearson
Tuesday Bible Study 10 am and 7 pm on Amos and Hosea

continued next column

Thursday 9 am Quilters

1st and 3rd Fridays Men's Prayer Group at noon.
Oct. 4 Lutheran Instruction Class begins. Call the church office.
Our van is available. If you need a ride call the church office.
New members welcome. We invite you to call Pastor Ofstedal

ST. A.P. UNITED CHURCH OF CHRIST

2129 Commonwealth at Chelmsford. 646-7173
(636-7174 after hours to leave a message)

Sunday Schedule

Church School: 9 am
Adult Education: 9 am
Worship 10 am.

Oct 2 William Kaseman, MN Conference of the UCC will be worship leader. Worship will be led by clergy members of the congregation all other October Sundays.

A warm welcome to visitors. Call church for details.

ST. A.P. UNITED METHODIST CHURCH

THE CHURCH WHERE EVERYONE IS ALWAYS WELCOME
Como and Hillside. 646-4859

Sunday Schedule

Adult Classes, Fellowship Time, Children's Choir 9:30 am
Church School 10 am
Choir Warm up 10:15 am
Worship 10:45 am
Coffee Hour 11:45

Wednesdays 9 am - 1 pm Leisure Center with noon lunch
Fridays 7 - 10:45 pm Youth Activity Night
Oct. 2, 6 pm Family Night Activity and Potluck
Oct. 29 Country Festival

ST. CECILIA'S CATHOLIC CHURCH

Cromwell and Bayless Place. 644-4502

Saturday Mass: 5 pm

Sunday Mass: 10 am at church (nursery provided) and 8:30 am at Seal Hi-Rise, 825 Seal St. (handicapped accessibility)

Sunday School during 10 am Mass for 3-5 year olds
Daily Mass: 7 am at the Parish Center
Holy Days Mass 7 am, 12:05 noon, 5:30 pm at the Hi-Rise
CCD and Confirmation begins Oct. 5, 6:30 - 7:30

ST. MATTHEW'S EPISCOPAL CHURCH

2136 Carter at Chelmsford. 645-3058

Sunday Schedule:

8 am Holy Eucharist Rite I
10:15 am Eucharist Rite II
Nursery and child care at both services
Activities during the sermon at second service
9:15 - 10 am Education Hour for All Ages
Oct. 16, 4:30 pm Recital and Evensong
Oct. 23 Mission Sunday: 1 service at 9:15 am
The Rev. Grant Abbott, Rector
The Rev. Lynn Lawyer, Deacon

WARRENDALE PRESBYTERIAN CHURCH

1040 Como Ave. at Oxford. 489-6054
Sunday Worship: 10:15 am (nursery provided)
Sunday Church School: 9 am
Dr. Robert Bailey, Minister

1st

For all
your
word
processing
and
editing
needs

**BLUE
RIBBON
WORD
SERVICE**

IBM & Macintosh

Linda K. Brunell
612 644-0299

**BE A
GOOD NEIGHBOR
BE A
DESIGNATED DRIVER**

Let's all join
together and make
the designated
driver concept
work in our
community. There are
too many lives
at stake for us not
to succeed.

**James R.
Roehrenbach
Agent**

2190 Como Ave.
St. Paul, MN
55108

Bus: 644-3740
Home: 770-3299

Like a good neighbor,
State Farm is there.®

State Farm Mutual
Automobile Insurance Company
Home Office:
Bloomington, Illinois