

New St. Paul ordinance restricts railroad yard noise

By Winton Pitcoff

On October 6 the St. Paul City Council unanimously adopted an ordinance to protect neighborhood residents from the environmental impacts of railroad yards.

The bill, authored by Councilmember Paula Maccabee, was directed specifically at Burlington Northern Railroad, its existing intermodal hub in the Midway neighborhood, and its proposed new hub, most of which will be in Minneapolis but part of which will be in St. Anthony Park.

An intermodal hub is a railroad yard where truck trailers are brought in on flatbed train cars, lifted off by crane and driven away by tractor trailer trucks.

The new ordinance allows such hubs to be built only in industrial districts zoned I-2. The current site is zoned I-1. The existing hub will be grandfathered in to the ordinance, but will not be allowed to expand or complete any major renovations.

Along with the location restrictions, the new ordinance lists other requirements for the hubs. Operations at the hub must be at least 1000 feet from the nearest homes, landscaping must be provided and maintained to mitigate noise and provide visual barriers, and access to the hub must be limited to roads designed for use by heavy trucks.

Residents in the Newell Park neighborhood near the hub's current location on Pierce Butler Route have long complained about the noise of the trucks driving to and from the facility and the cranes lifting the trailers on and off of the trains. Maccabee said the distance requirements specified in the new ordinance will reduce these noise problems.

Maccabee also said the proposed site is better located for noise mitigation, because it is not on a hill like the current site. She said that the new site is also larger than the current one and can accommodate newer, quieter cranes.

Chuck McGuire, a planner in the department of Planning and Economic Development for the City of St. Paul, said the

noise from the hub itself won't be excessive, and added that most of the noise won't be able to be heard over the sound of traffic on highway 280.

McGuire added that traffic noise from the trucks will increase, though, particularly for homes near the intersection of highway 280 and Energy Park Drive.

Byron Olsen, a local attorney for Burlington Northern, calls the new ordinance "overkill."

"There's no objective evidence that there's sound dissemination even at 500 feet," said Olsen. He said even though the requirements are excessive, Burlington Northern will meet them. "Burlington Northern wants to make the new hub a state of the art facility," he said.

The proposed site is on land already owned by Burlington Northern, and has been a railroad yard for over 100 years. Olsen said the hub will likely make less noise than the facility's present use.

Olsen said the hub will utilize quieter cranes, and because of its size will require less switching of trains from track to track, reducing noise significantly. He also said the new facility will be paved, adding that the railroad would like to repave the current site in order to reduce truck noise, but is prevented from doing so by the ordinance which forbids any new development at the site.

Olsen said the new site won't be in use until 1995, mainly because of an ongoing process in Minneapolis involving reevaluating zoning ordinances. Some Minneapolis residents have expressed concerns about noise from the proposed hub, and Olsen said Burlington Northern is working with the city and the residents to come up with a plan.

Minneapolis Councilmember Joan Cambell's office said the city is looking at St. Paul's new ordinance, and will take it into consideration when drawing up its new plans.

"I live in St. Anthony Park," said Olsen, "and I wouldn't want this in my backyard if I didn't think it was an efficient and unobtrusive use of the space."



Photo by Truman Olson
Ian Maitland (IR) (l) and Bruce Vento (DFL) (r), candidates for U.S. House of Representatives from Minnesota's 4th district, met in a debate sponsored by the St. Anthony Park Association at St. Anthony Park United Church of Christ on October 13. Maitland, a St. Anthony Park resident, is challenging the eight term incumbent for the third time.

VOTE ON NOVEMBER 3

These are the candidates for Ramsey County Board of Commissioners, U.S. House and Minnesota Legislature. See article on St. Paul school referendum on p. 3.

Lauderdale

RAMSEY COUNTY BOARD OF COMMISSIONERS

Don Salverda
Brenda Thomas

Falcon Heights and Lauderdale

SENATE DISTRICT 54
Pat Igo - IR
John Marty - DFL

HOUSE DISTRICT 54A
Sheldon Christenson - IR
Mary Jo McGuire - DFL

St. Anthony Park and Como Park

SENATE DISTRICT 66
Ellen Anderson - DFL
Gary Carlson - Independent

HOUSE DISTRICT 66B
Alice Hauseman - DFL
John Krenik - IR

All Bugle neighborhoods

U.S. HOUSE DISTRICT 4

Lynn Johnson - Natural Law Party
Ian Maitland - IR
Jo Rothenberg - Socialist Workers Party

Dan Vacek - Grass Roots Party
Bruce Vento - DFL
James Willess - Independent

Polls are open from 7:00 a.m. to 8:00 p.m. on Tuesday, November 3. Call 266-2171 weekdays 8 a.m.-4:30 p.m. to verify polling place.

Voting by mail is also available in Ramsey County. For a ballot call 266-2188, 24 hours/day. Or you can go to the Ramsey County Office of Elections/Voter Registration at 50 Kellogg Blvd. W., Suite 722, or city halls and public libraries throughout the county to pick up a ballot.

Solutions outlined for coal-related problems near St. Paul Campus

By Corinna Nelson

Commonwealth Terrace residents may soon have fewer coal trucks roaring past their homes, and may not experience as much coal dust as in the past.

Foster-Wheeler, the company which now manages the University of Minnesota steam plant adjacent to the housing units just east of the St. Paul Campus, will change coal truck routes, store less coal outdoors and regularly spray the coal to keep the dust down, said University spokeswoman

Sue Markham at a St. Anthony Park Community Council meeting on October 7. George Delarche, general manager of the plant, outlined the new truck route and coal storage procedures in the meeting and in a subsequent interview.

Coal trucks will be tarped, and Foster-Wheeler will screen out smaller coal which produces more ash, Delarche said.

The trucks transporting coal from the Minneapolis storage site will take highway 94 to highway 280, go east on Larpenteur, and then south on Gortner, entering the plant gate from Gortner and

avoiding Commonwealth, Delarche said.

The plant will store up to 2,000 tons of coal outdoors, Delarche said. In January, 1992, there were 9,000 tons stored outdoors. Foster-Wheeler will spray the pile with water to keep down the dust. Over the next 25 years, the plant plans to burn 10% coal and 90% natural gas overall.

The problem for residents is that those percentages are averaged. The plant will burn more than 10% coal during the

Coal to 14

INSIDE.....

Agreement on revised expansion for Lyngblomsten	pg. 8
More 280 expansion ahead	pg. 5
School board referendum debated	pg. 3
Retirees return to grade school	pg. 2

Orchard Fresh
apples,
honey &
maple syrup

Appreciate the Best!

OPEN 9-6
EVERY DAY
STATE FAIR
GROUNDS

inTown
APPLE STORE

643-6309
(WEST OF GRANDSTAND)

Former University professors return to grade school

By Vickie Gilmer

Budget cuts, growing classroom sizes, and an ever-diminishing pool of resources makes a group of volunteers ready and willing to help teachers implement enrichment programs for students seem like a godsend.

Twelve to 15 senior citizen retirees from the University of Minnesota, many of them former professors, have organized themselves and are starting the ElderMentor program, which provides students with the opportunity to work one-on-one in areas where they may need remedial help. The program has made its Twin Cities debut at St. Anthony Park Elementary School, the only school in the metro area to offer such a program.

"There's always been an untapped portion of volunteers in the city. These are people with time on their hands and many times anxious to do service," principal Tom Foster said. "For one thing, we lost the Chapter One program last year. It [Chapter One] encompassed getting help for remedial children, children that have remedial needs, and we knew that we were going to have to depend more on volunteer help."

The ElderMentor program is part of a statewide program being sponsored by the Minnesota Department of Education and the Minnesota Board on Aging, and involves the University of Minnesota Retirees Association.

The University's group includes 155 retirees who work in a variety of volunteer areas.

Teacher Charlotte Kelly has been involved with implementing the ElderMentor program, and is enthusiastic for the opportunity it offers her students. "We decided that actually what we wanted was some enrichment and these people are from the University and have just vast amounts of expertise," Kelly said that "especially with some of the younger children it's really nice to kind of have someone supporting them as they're learning the process." Kelly said she experimented with the program last year, enlisting two Japanese women to come to the school to talk with the students about Japan and demonstrate paper-folding.

However, there is one roadblock that has nothing to do with education and may prevent the participation of some retirees in the program: access to parking. Due to the lack of parking within an easy proximity to the school, and the difficulty some retirees may have with mobility, both Foster and Kelly are concerned that they cannot offer enough courtesy services to attract the volunteers.

"It's awfully difficult for us to ask them to school and not provide a service of at least being able to drive up to the school and walk in the door instead of walking quite a distance in the snow where there's no sidewalk," Foster said. He added that other volunteers and parents have

complained about coming to the school because of a lack of parking. The school is dependent in many areas for volunteer help—the library alone has 25 volunteers.

Kelly and Foster both agree that the main concern is to keep the ElderMentor program. "Last year, in my room, another woman came from the program and we were reading a story in the room and two children got a chance to read it out loud and talk about it as they were reading. It really increased their comprehension skills because in a class they would have had one out of 28 chances to respond. With her, they had one out of two chances." Kelly said all school work that is completed with someone from the ElderMentor program is graded along the same guidelines as the rest of the class.

"They're there to supplement and to give extra help—it might be during that class that's operating. And once the assignment is given, they can work with the aide to get that one-to-one help which will help them to catch the concepts," Foster said. "I don't know of any other senior group that is organized as this one, and it may spur on other groups in other schools to look for those kind of opportunities. I mean, there's many elderly out there that have that potential of doing something for children."

Anyone interested in learning more about the ElderMentor program can call the University of Minnesota Retirees Association at 625-4700.



Music in the Park Series: 1992-93

Special Concert

Friday, Nov. 6, 8 PM • Jack Glatzer, violin virtuoso
at United Church of Christ

NOV. 22 ROSALYRA STRING QUARTET,
4 pm with BURT HARA, clarinet
Sara Kwak & Celine Leathead, violins, Sabina Thatcher, viola & Beth Rapiet, cello.

JAN. 24 DUOLOGUE; Susan DeJong & Jeffrey Van
4 pm BOLAND - DOWDALL DUO; Jan Boland & John Dowdall in an afternoon of music for flute and guitar

FEB. 21 BYRON STRIPLING, trumpet virtuoso in
4 pm "JAZZ - A LOVE AFFAIR"
With Jimmy Hamilton, piano; Gary Raynor, bass; Phil Hey, drums

MAR. 7 JANET PACKER, violin &
4 pm HOWARD KARP, piano

APR. 4 THE EROICA TRIO;
4 pm Adela Peña, violin, Sara Sant' Ambrogio, cello & Erika Nickrenz, piano.

ALL CONCERTS AT

ST. ANTHONY PARK UNITED CHURCH OF CHRIST

2129 Commonwealth Ave. at Chelmsford St. in St. Paul

SEASON TICKETS: 6-CONCERT SERIES \$45
(Save \$15 over single tickets)

SINGLE TICKETS: \$10 at door, \$9 advance
(Student rush: \$5)

AT THE BIBELOT SHOP (646-5651) & MICAWBER'S BOOKSTORE
(646-5506) in St. Anthony Park, or write to: MUSIC IN THE PARK
SERIES, 1333 Chelmsford St., St. Paul, MN 55108

Information / Brochure: 644-4234.

280 redesign from 5

without traffic lights usually has a rating of half that amount.

VanBerkom's figures show that most accidents occur at interchanges or intersections and, of all the intersections, the lighted intersection at Broadway had 85, the most accidents in the last three years. The Kasota Avenue intersection had 68 accidents; Como Avenue 68; Larpentur Avenue 48; and County Road B had 34.

VanBerkom said the 1997

project will include the replacement of the interchanges—on and off ramps—to make them longer like those on a freeway. The roadbed may also be lowered and moved slightly west.

VanBerkom is looking forward to the upcoming meeting to show the community what MNDOT has planned so far. He said community involvement is important because, "the people who live there know more about it [the problems that exist] probably, than we do."

He said that \$12 million has been appropriated for the project so far, and that, in addition to making the road safer by updating it, a full noise study will be done. He reported that the future redesign plans incorporate the construction being done at present to widen the bridges over Kasota and the railway tracks.

About the need to solve the problem, both sides agree. "Something should be done because it's a very old road and the traffic's going to be there whether we do it or not," VanBerkom said. Larson put it another way, "280 is here to stay; it's just that we as a community need to be made aware of future plans earlier so we can act on them."

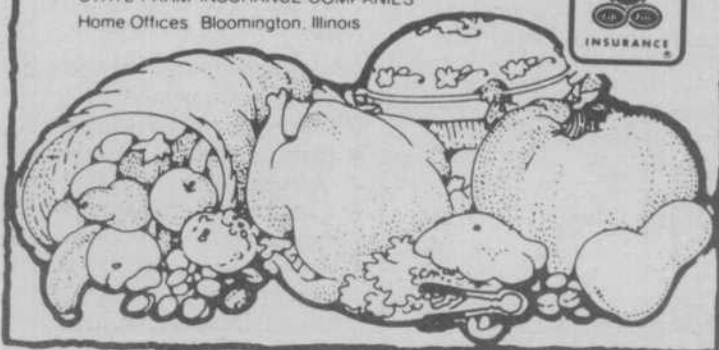
A time for giving thanks

For the privilege of living and working in this community. For wonderful friends and neighbors. For serving your insurance needs. May you all enjoy a safe and happy Holiday.

James R. Roehrenbach, Agent
2190 Como Ave., St. Paul, MN 55108
Bus: 644-3740 Home: 770-3299

Like a good neighbor, State Farm is there.

STATE FARM INSURANCE COMPANIES
Home Offices: Bloomington, Illinois



St. Cecilia's Catholic Church

New Holy Day Mass Schedule:

7 a.m. at the church
5:30 p.m. at the Seal Hi-Rise
(12:05 noon
mass discontinued)

Cromwell and Bayless Place
644-4502

School funding referendum on November 3 ballot

By Jane McClure

Effectiveness of St. Paul's public schools versus accountability for educational spending are at the heart of a debate to be resolved Nov. 3.

Months of effort by both sides will end that day, as the St. Paul School District's second excess levy try in two years goes before the voters. If approved, the referendum will raise an additional \$60 million, or \$12 million every year, over a five-year period.

Many of those on either side of the excess levy issue agree on one thing: A \$12 million per year proposal may be easier for voters to accept than the \$19.5 million effort narrowly rejected two years ago.

"I'm optimistic," said School Board Chairperson Becky Montgomery. "But that doesn't mean we can let up on our efforts."

Montgomery and other referendum proponents contend that without the added funds, St. Paul Public Schools will be hard-pressed to meet student needs. But opponents say the proposed referendum will raise property taxes too much for too little in return.

"I think it will probably pass," said William Rosenbloom, a Highland Park area resident and leader of Concerned Taxpayers for Quality Education. "I think the strategy is to be as low-key as possible. The last thing the school district wants is controversy."

If the excess levy referendum is approved, funds are to be used to:

- Limit K-6 class size to no more than 30 students. Reductions are also proposed in the size of junior high/middle school "core" classes such as math, science and English.

- Offer more high school students the chance to take a sixth hour course. Currently, about 20 percent of St. Paul public high school students can take a sixth course. The increased spending would allow about 50 percent to add a sixth course. Total costs of these options, which primarily involve hiring more teachers, are at \$7 million.

- Increase learning readiness by expanding Early Childhood Family Education programs, the Family Resource Center program and the four-year-old school readiness program. (\$2.5 million)

- Offer more teacher training, with training support programs for new teachers who don't have tenure status, and specialized subject content area training to all teachers (\$1 million)

- Hire more instructional staff at all levels, including librarians, counselors, English as a Second Language (ESL) teachers and para-professionals in such areas as math and science. (\$1.5 million)

Library and counseling staff have borne the brunt of some budget cuts in recent years. Demand is also increasing for ESL classes, as the city's population of non-English speaking children rises.

On a per-pupil spending basis, the referendum will add about \$300 to the amount allocated for each student. Per-pupil spending in the St. Paul Public Schools is currently at about \$4,050, with \$3,050 coming from the state and \$1,000 from tax levy dollars.

Getting the referendum on the ballot has taken months of effort, as well as compromising. Some potential opposition to the proposed excess levy request was vanquished in September, after the St. Paul School Board voted to cut the levy from \$16.5 to \$12 million. The reduction was made at the behest of the St. Paul Area Chamber of Commerce. Chamber members, who remained neutral on the failed 1990 levy, indicated they would support the lower amount. School district officials also agreed to work with Chamber members in measuring whether district goals are met, selecting an outside consultant to review budgets and fiscal policies, and doing strategic planning for St. Paul Public Schools. In turn, Chamber members have offered to develop more partnerships with the school district, and assist in training teachers and other staff members. A fundraising effort is also proposed, to help cover costs of evaluating the proposed program. That effort will eliminate the need to use excess levy funds to study the results the excess levy is to produce.

Rosenbloom is among those who argue that the School Board "sold out" to the Chamber of Commerce. "I don't know if I want the Chamber of Commerce running this school district," Rosenbloom said. "The Chamber's made up of downtown, big business types, many of whom don't even live in the city. I don't want them deciding how much property tax I pay."

Reducing the excess levy to \$12 million means trimming a proposal that had been previously winnowed from \$26 million in school district needs. The push to make further cuts prompted mixed reactions from school board members, ranging from bitterness at business leaders' sentiment to optimism that chamber support would be an important boost.

In discussions earlier this year, Superintendent Curman Gaines and some school board members pointed out that the referendum's goals, and the students themselves, will in turn be better prepared to meet the business community's future employment needs.

But making the cut from \$16.5 to \$12 million meant cutting the teacher training budget from \$2.1 to \$1 million, and spending \$1.5 million instead of \$2.5 million for library, counseling and education support staff.

Another effort trimmed is that of school readiness for four-year-olds, from \$4 million to \$2.5 million. This was cut earlier this fall, with the expectation that either state or federal funds may be drawn on to supplement that budget. However, recent word of a \$700-plus million state funding shortfall makes the prospect of more state dollars a question mark.

Spared the brunt of the cuts were plans to limit elementary school class size, reduce the size of junior high/middle school core classes, and offer more courses for high school students. About \$800,000 was cut from those plans. Montgomery stressed that the referendum efforts will be carefully monitored, if they are approved Nov. 3. Should changes need to be made in certain programs, that will be done.

Efforts to promote and protest the referendum have been quiet thus far. Proponents and opponents have addressed many of the city's district planning councils, and have also appeared at a smattering of community forums.

As of mid-October, city residents had received two mailings, an informational piece from the St. Paul Public School and pro-referendum literature from Vote Yes for Kids. Evening and weekend phone calling by Vote Yes for Kids began in late September.

Information also may be essential to the excess levy referendum's passage this time around. Last spring, a school district-commissioned survey indicated that an excess levy referendum stood a good chance of passage, if it can be proven that schools need more funding. Survey results indicated a narrow margin of 5 percent support over opposition for an excess levy referendum. However, 61 percent of those questioned said they needed more specific information before taking a stance on the issue.

No citywide mailings had been sent by anti-referendum groups, nor had any phone campaigns been announced.

Jane McClure is a reporter for the Neighborhood and Community Press Association's St. Paul Neighborhood News Service.



AFSHAN
Oriental Rugs

Specializing in RESTORATION
and CLEANING of Handmade
Oriental Rugs, Kelims,
Navajos and Needlepoints

**Anniversary
Special**

20% OFF
on
rug cleaning

Expires: 12/31/92

659-9113

We Buy Old Rugs

1543 COMO Ave. St. PAUL

Dr. Todd Grossmann
Dr. Paul Kirkegaard
2278 Como Ave. • 644-3685

Your neighbors in St. Anthony Park



**A Scandinavian Touch
For Our Annual Bazaar**

We'll have GIFTS, TOYS, BAKED GOODS,
with a SCANDINAVIAN Flavor.
We'll have ATTIC TREASURES, PECANS,
PEANUT BRITTLE, "COLLECTIBLES,"
HARDANGER and more!

Where: St. Anthony Park
United Church of Christ
2129 Commonwealth Avenue

When: **Thursday, November 12**
Time: 10:00 A.M. - 2:30 P.M.
Lunch: 11:30 A.M. - 1:30 P.M.
Cost: \$4.00 Adults - \$1.75 Children



The Transformed Tree

Remodelers and Cabinetmakers

Custom
Kitchens
Creative
Bathrooms
Home
Additions

**Experienced, Dedicated Craftsmen
in our 19th year of business**

Certified Remodelers on staff
licensed/bonded/insured
State License #1856

646-3996

2339 Carter Ave. in St. Anthony Park

M. Mariano & Co.
for Hair

INTRODUCES
• Lori Kueppers •



A talented stylist with
7 years experience in
haircutting, perming,
and coloring, we are
proud to welcome Lori
as the newest member
of our professional
team.

Open Tuesday thru Saturday
including Tues., Wed., and Thurs. evenings

645-7655

23101 Como Ave., St. Paul

Editorial

Back up your ballots

Though much has changed in our education system, elementary school students today are still being taught some of the same things I remember learning, among them the principle that our system of government is designed in such a way that if the people don't like it they can change it. Students are still taught that every four years the public is given a chance to decide what they want their government to do for them. On the whole, it's a good concept and works for a lot of people.

Some people in South Central Los Angeles last spring didn't think it was working all that well, though. Neither did someone on the corner of 17th Ave. and Lake St. in Minneapolis on September 25. Though these are extreme examples of people's dissatisfaction with "the system," they are indications that the process may have some flaws.

There are other avenues of change as well, though. Residents flooding the city planning department with letters supporting restrictions on a railroad yard, restrictions that were ultimately codified. Neighbors convincing a local institution to limit its expansion so as not to disrupt the scenery. People organizing block clubs to help fight crime. People who decide not to rely solely upon their elected representatives or hired public employees, but rather take it upon themselves to bring about the changes they want.

But too many people still think that casting their ballot is the only role they need to play in the system. The rest of the year they spend grumbling about how their representatives don't represent them, the government is one big chain of insider deals, the media is nothing more than a one-sided big business, and the judicial system is not only blindfolded, but bound and gagged as well. And the more people sit and think these thoughts, the more true they become.

The *Bugle* has long supported citizen involvement. Our connection to the community is visible in that we are often the only regular source of information about neighborhood activism, but we can be even more. The *Bugle* belongs to the community, and strives to include as many voices from that community as possible. Letters to the editor and commentary pieces are always welcome, as are ideas about issues to cover.

By all means, vote on November 3. Cast an educated ballot for the candidates you think will best represent you. But don't stop there. Connect with your neighbors about what you would like to see changed, get involved with a community organization, write a letter to the *Bugle*, claim the neighborhood, the city, the state, and the planet as your own and get involved in making sure they become or remain the kind of place in which you want to live.

Next issue November 27
Display ad deadline November 12
News & classifieds deadline November 16

Park Bugle 2301 Como Ave., Box 8126
St. Paul, MN 55108 646-5369

The *Park Bugle* is published by Park Press, Inc., a nonprofit organization guided by an elected board of directors. Currently serving on the board are Cindy Anderson, Kent Eklund, Audrey Estebo, Jeri Glick-Anderson, Catherine Holtzclaw, Paul Kirkegaard, Nathan Morris, Mary Nelsestuen, Jeanne Schacht, Joel Schurke, Marietta Spencer, Paul Stegmeir, Dale Tension, Willard Thompson and Steve Wellington.

The *Bugle* is a community newspaper serving St. Anthony Park, Lauderdale, Falcon Heights and Northwest Como Park. The *Bugle* reports and analyzes community news and promotes the exchange of ideas and opinions in these communities. In carrying out its work, the *Bugle* strives to promote freedom of expression, enhance the quality of life in the readership communities and encourage community participation in these endeavors.

The *Bugle* is published the last Thursday of each month. It is mailed free to residents of St. Paul's District 12, part of St. Paul's District 10, Falcon Heights and Lauderdale and distributed through local businesses. Subscription rates are \$8 per year, \$4 for senior citizens.

Editor: Winton Pitcoff, 724-6819
Business manager & advertising representative (St. Anthony Park, Falcon Heights & Lauderdale): Kathy Magnuson, 645-2475
Advertising rep. (all other areas): Rachel Larson, 644-5188
Production coordinator: Kathy Malchow, 646-1288

Opinions expressed in the *Bugle* by the editors, columnists and contributors do not necessarily represent the opinions of the Board of Directors, Park Press, Inc.



Copyright©1992 Park Press, Inc., St. Paul, Minnesota.
All rights reserved.

Letters

More on the Job Corps

Dear editor:

In response to Mr. Lawrence's letter to the editor in the October issue relative to Job Corps:

First of all the Job Corps Center not only

provides training for youth in the Twin Cities area, but also nationwide. True, the teaching staff at the center is excellent, and we do commend them.

The negative energy that "us" people have been putting into the center stems from taking responsibility and a

stand for what we believe in. The majority of the neighbors in the surrounding area are not against the principle, nor the intent of Job Corps. It is becoming even more of a necessity in our nation. But, we believe that we have a right to keep our neighborhood, friends, families, and children safe. Everyone has that right. Many of us have young children and are trying very hard to set a positive stage for

them to become successful and responsible adults. Acceptance of violent behavior by any youth is unacceptable. To look the other way would be irresponsible of all of us. Everyone deserves a chance to succeed, but not at the expense of others.

Disciplinary rules, and high behavioral expectations need to be clear, fair, and consistent. This is not unfair because that is what is expected in the

Thanks to more Bugle fund drive contributors

As of Oct. 18, the 1992 Bugle fund drive had received more than \$10,000, thanks to those listed below and last month.

There's still time to send in your contribution. Use the form below.

- | | | | |
|---|--|--|--|
| Lucy & Ernst Abbe
Lucille Abler
Marie Adams
Jack & Jane Allison
Elmer Andersen
Astrid Anderson
Charles & Catherine Anderson
Joel & Teresa Anderson
Ellen Anderson
John & Nina Archabal
Robert Arnold
Frederick Army
Mike & Sue Baizerman
Harold & Lucille Baker
Catherine Holtzclaw,
Bane, Holtzclaw & Palm
Virginia Barrick
Donald & Mildred Bates
Edwin Bauer
Gary, Ase & Susan Bauman
Cheryl Becker
Frank & Patricia Benson
Merlin & Olga Berg
John & Frieda Boeke
Dick & Doris Bonde
Jane Bose
Mel & Beth Boynton
Murray & Geraldine Braden
Brasel family
Paul & Carletta Braun
Don & Nancy Breneman
Robert Brooks
Mr. & Mrs. Gerhart Buehrer
Barbara & Francis
Bulbulien
Bill & Ann Bulger
Marjorie Carlson
Clarke & Florence Chambers
Chau H. Nguyen,
Chinatown Restaurant
Art & Gwen Christiansen
David & Michelle
Christianson
Lillian Cook
Bryce & Ruth Crawford
I. b. & Jean Curtiss
Laurence Cutkomp
Alice Danielson
Dave & Karen Davis
Jose A. Del Carmen
Ellen Deutsch
Richard Dimond
Chris & Jean Donaldson
Hal & Pam Dragseth | David & Alice Duggan
Tom & Joan Duke
Edward & Helen Dyrda
Robert & Marian Ed
Diane Emerson &
Bradley Nelson
Frances E. Erickson
Gertrude Esteros
Sheldon Fardig
Vera Franke
Alice Fredrikson
John Frost &
Nanci Yermakoff
Mike & Sue Furry &
John Seltz
Donna Gallagher
Joel & Florence Gerber
Dr. R. H. Gerst
Robert Gille
Geri & Charles
Glick-Anderson
Rose Gregoire &
Bob Delmas
Mary Griffin &
Ray Dietman
Group Health Inc.
Ethelm Gruner
Raymond Halley
Lucille Halserson
Arndt & Emily Halvorson
Trygg Hansen
Elsie Hanson
Theodore Hawkinson
James & Laurie Hayes
Dorothy Healy
Beulah Hebbel
Florence & Jean Hoska
James & Margaret Houck
Laura Houge
Sally Jannette
June Bakke Joseph
Joanne & David Karvonen
Ione Kaufert
John & Anne Kersey
Monica Kline
Dorothy Belugum Knight
Knudsen Realty Co.
Helen Koelsch
Catherine Kohn
Edward Kraft &
Mary Pat Roberts
Matthew Kramer
Doug & Bea Krinke
Mike & Sue Krivit
Joanne & David Laird Jr. | Virgil & Verena Larson
Daniel & Gaye Larson
James & Sarah Larson
Dean Larson
Steve Lasco
Arlo & Mary Leinback
Nowell & Julia Leitzke
Betty Lockhart
Wallace Loucks
Lydon-Bricher Mfg. Co.
Ron & Nancy Maeker
Alice Magnuson
Peter Mann & Mary Elefson
Stewart & Jeanne Marshall
Paul & Ida Martinson
Richard & Virginia Mather
J. Medbery & R. LaBree
Mike & Bunny Mennie
Jack & Joanne Meyer
Philip & Henrietta Miller
Camille & Steve Miller
Steve & Pat Mitton
Betty & Fred Morlock
David Mueller & Lori Reinert
Gordon & Barbara Murdock
Richard Nagler
Alyce Neetzel
Nelsestuen
Steven Nelson
Karl Nitschs
Vern & Marge Novak
Truman & Elizabeth Olson
Ken & Lucy Olson
Robert & Alice Ott
Alfred & Edna Pankonin
John & Beverly Pearson
Carol Pearson
Joseph & Marie Pekarek
Vivian Peterson
Kit & Jim Pfau
Betty Lou Anderson
Picard
Eileen & Patrick Pinto
Steve & Nancy Plagens
Benjamin Pomeroy
Gene & Judith Probst
Joseph Rehtiene
Elizabeth Reed
Garnet Rice
Janis & Don Ruddick
Matt & Helen Ruohoniemi
Karl & Chris Ruser
Vernon & Marilyn Ruttan
Louis Safer
Steven & Coral Saxe | John & Joyce Schafer
Dick & Carol Schoen
William Schultz
Jon Schumacher &
Mary Briggs
Hal & Kay Seppala
Barbara Shiels &
FrankPreese
Phil & Barbara Shively
Robert & Gladys Shoffner
Lloyd & Marjorie Siewert
Wayne & Ann Sisel
Joe & Elvera Skovholt
Hilliard Smith
George Smits
Arlene & Gordon Spiegel
& Alexander
Alan & Trish Stefanson
Hazel Stoeckeler
Olaf & Lila Storaasli
Beverly Stroschein
June Swanson
Leigh Sweet
Denise Tennen
Dale & Barb Tension
Robert Thayer &
Nancy Meade-Thayer
The Ofstedals
Curt & Glennys
Thormodsgaard
Lois Thorstenson
Robert & Miriam Titzler
Transformed Tree
Douglas & Susan Tuve
Lloyd Ulylot
James & Carol Unger
Margaret VanZanden
Mr. & Mrs. P.C. Verbrugghen
Timothy & Gretchen Walker
Marion Watson
Ralph & Verna Wayne
Alvin & Eleanor Weber
Wayne & Gail Weig
Delane & Kay Welsch
Jean White
Walter Wickstrom
Duane Wiest
Ruth Wirt
H E Wright
Ann & Gary Wynia
Richard & Carol Zapfel
Carole Zellie |
|---|--|--|--|

GIVE WHAT YOU CAN

Contribution amount: \$100. ☐ \$50. ☐ \$35. ☐ \$25. ☐ \$15. ☐ other ☐

NAME _____

ADDRESS _____

CITY _____ STATE _____ ZIP _____

A list of all donors will be printed in the Bugle. If you wish to remain anonymous, please check here ☐

Your contribution is tax-deductible to the fullest extent of the law. Please make checks payable to Park Press Inc. and mail to:
Park Press Inc., Box 8126 Como Station, St. Paul, MN 55108.

THANK YOU FOR YOUR SUPPORT!

real world. We want these students to not only succeed in their educational experience but also in the work force after training. If these things are not achieved then who loses? Not just the student, but each and every one of us. The criticism has not been the Job Corps Program, but how the Job Corps Program is carried out and administered.

The Neighborhood Advisory Committee has been working very

closely with the Department of Labor, the current contract holder, and St. Paul City officials to provide assurances that both the neighborhood and the Job Corps Center can be good neighbors to each other. Once this has been achieved, only then, can we begin to build the bridge of friendships.

Jane Kramer
Como Park resident of 12 years

insurance company. Can you imagine me calling him up on a Saturday afternoon and saying, "Say, Dave, might you have the time to come over and help me figure out the probability of my living long enough to maximize my post-career investment potential? I'll provide the mineral water!" Not a chance.

Or do you think there is any possibility that I would call up one of my lawyer acquaintances and say, "Y'know, Tom, I was thinking of maybe overhauling my estate plan this weekend, and I was wondering if you could bring some of your tools over and give me a hand." I don't think so.

Men don't want friends who think. Men want friends they can get dirty with! Friends they can holler with. That they can sweat with. When men are with their friends, they want to be able to take off their shirts, beat their chests, use the bathroom without closing the door. Drinking and cussing and rubbing motor oil in your hair — that's what friends are all about.

My friends just don't do those things.

My friends go to foreign films at the University Film Society instead of staying home and watching ESPN until they fall asleep in their chairs. Rather than rebuilding their carburetors, my friends build harpsichords. Just last week one of my so-called friends brought over a loaf of bread he had baked — himself!

Of course, I have to admit that, as a friend, I'm probably no prize myself. After all, what do I do for a living? I'm an artist. An artist, for pete's sake! How useless can you get?

I'd love it if some guy would call me up and ask, "Can you come over and help me fix up the sunset in this watercolor I've been working on? I'll provide the Heineken!" But does it ever happen? No!

Does anyone ever ask my advice on whether the Mondrian or the Modigliani looks better over the divan? Heck no!

Maybe if I want to attract men friends who have useful skills, I'll have to develop some useful skills of my own. Maybe if I applied my artistic adroitness to painting murals of pheasants in flight on the sides of neighbors' garages, I would start to attract the kind of buddies who could help me install a garage door opener. Or maybe I could get invited over to watch The Game if I did sketches of the action, like those courtroom artists.

Or wouldn't it be a coup if one of the guys in the neighborhood offered me a can of his favorite brew and I was able to say, "Y'know, I designed that label." I'll bet I'd have friends galore then, boy.

In the meantime, I guess I'll have to be satisfied with friends who are Lutheran ministers, whose talents for baptizing and reading Greek come in so handy. And until I develop more friendship skills of my own, I guess I will have to be satisfied to be a suspicious loner, stealthily stalking my way through life, avoiding close alliances for fear that today's harpsichord-building, bread-baking actuary may become tomorrow's consultant.



Illustration by Warren Hanson

Resident input sought for 280 redesign plans

By Kristin Copa

Community concern over the construction and future design plans for Highway 280 will be the topic of discussion at a meeting Thurs., November 12 at 7 p.m. at the St. Anthony Park United Methodist Church.

Several neighborhood members, including State Representative Alice Hausman, have joined to form a group called "Citizens Concerned For Habitable Neighborhoods." The group drafted a letter of concern and an invitation to the meeting to the Minnesota Department of Transportation, the St. Paul Mayor's office, Burlington Northern representatives, District 12 officials, the St. Paul City Council and the City of Lauderdale.

Refurbishing the highway and especially the Kasota bridge is being completed in two stages, the first of which took place last spring on the southbound side, and the second stage to begin this spring for the other side. This construction is being done now in spite of major redesign work scheduled for 1997, since increased traffic on the highway had made the bridge and the roadway unsafe.

Redesign of the highway will mainly affect the stretch north of Larpentur Avenue, possibly even including Como Avenue. The community is looking for more involvement with the construction next spring and the 1997 redesign, because the residents felt underinformed about the 1992 construction.

Gaye Larson, a St. Anthony Park resident for whom the steady hum of the highway is a part of life, said the members of Citizens for Habitable Neighborhoods main concerns are for safety and noise control. She said the group is also very concerned about the possibility that the Burlington Northern railway hub may be relocated to the area west of 280.

"The community has long been concerned with noise and risk," Larson said, "and it's made worse by the construction and relocation of the BN hub."

The group would like to see noise barriers and guard rails put up along the stretch of the highway that runs along the west side of St. Anthony Park from the Kasota Bridge to Lauderdale, she said.

In the group's letter, this area is particularly targeted because the highway is elevated and there is no barrier. The draft of the letter reads: "An automobile or truck that would leave the road, perhaps because of an intoxicated driver, a blown tire resulting in loss of control, or a driver falling asleep at the wheel, would have nothing to stop it from running into a home or pedestrian in the adjoining residential area."

The letter also states that children often play on the incline between the highway and Eustis Street, and there is no barrier to keep them from playing too close to the highway or to prevent debris from the highway flying off and hitting them.

Highway 280 currently serves 58,000 drivers each day, according to MNDOT engineer and 280 Project Manager Earl VanBerkom. He said that the figure increases all the time, up 1-2% each year. Some safety features have been added through the years, such as wider shoulders and guard rails. However, because the road is old—it was one of the first freeways in the area and was not designed for the amount of traffic on it—it has had several accidents.

MNDOT calculates a figure of accident rate per million vehicle miles to measure a highway's safety. Hwy. 280's rate is 2.6 accidents; VanBerkom said a good freeway

280 redesign to 2

HomeWords

Friends Wanted

(Some Skills Required)

By Warren Hanson

I don't have any friends.

(Well, maybe that's overstating the case. But it's dramatic, and it's a good way of getting your sympathy. Did it work?)

There's a lot written these days about how men don't have the kinds of close friendships that women enjoy. Men are portrayed as suspicious loners, stealthily stalking their way through life, avoiding close alliances for fear that today's friend may become tomorrow's foe.

Yuck! That can't be right! It makes men sound like a bunch of wild animals. (Keep your comments to yourselves, please.)

So let me start over and clarify. I can't really say that I don't have any friends. It's just that the friends that I do have are, well, sort of useless.

You see, the kind of friend that a man wants is the kind that you can call up and say, "Hey, Frank, how 'bout if you come over and help me wire the rec room this weekend? I'll provide the beer!"

A man wants a friend who has a whole garage full of power tools and knows how to use them.

A man wants a friend who is completely comfortable at the top of one of those tall aluminum extension ladders.

A man wants a friend who will happily come over and rebuild your lawn mower engine for you if he can do it in your living room so he doesn't miss The Game.

In short, a man wants friends who are handier than he is — friends who understand alternating current and washer-less faucets and internal combustion. I don't have friends like that. My friends aren't plumbers or electricians, carpenters or mechanics. My friends don't have the kinds of skills that will do me any good when I get into trouble on a weekend handyman project. I live in St. Anthony Park! The guys I know are all college professors or lawyers or Lutheran ministers. Some of them are even consultants! Who wants friends like that? What good are they?

There's one guy in the neighborhood who could probably be my friend, but he's an actuary for an

Road Map

Have you lost your direction with your business or your personal finances? We can map out a plan for you—to get where you want to go. Let us put you on the road map to success...

Give us a call—today.

612 / 644-5093



Norris Waalen, CHTD.
CERTIFIED PUBLIC ACCOUNTANT

SUITE 120 ▲ 1360 ENERGY PARK DRIVE ▲ ST. PAUL, MINNESOTA 55108

SAL'S PARK DELI

New York Style

2232 Carter in Milton Square

646-DELI

Happy Thanksgiving!

HOURS: 10-6 M-F, 10-4 SAT

Get your turkey sandwich early.



PICK-UP & DELIVERY
We're Fast...And We're Good!

**WE MAKE YOU
LOOK GOOD ON PAPER**
from

Announcements to Z-fold brochures
Full Color Copies • Full Color Printing
(4 color process)

11 CONVENIENT LOCATIONS

call 633-4600 for the location nearest you

Fax Numbers Available Upon Request.

Northern Clay Center

Family Workshops:
Create Your Own Platter
for Thanksgiving
Nov. 8, 1:30-4 pm
&
Holiday Ornaments
Dec. 6, 1:30-4 pm

Vintage Collections
on exhibit thru Nov. 13

Holiday Market
Nov. 20 - Dec. 31
Opening Reception
November 20, 5 - 9 pm

2375 University Ave.
St. Paul, MN 55114
phone: 642-1735

Flowers by Jane

Now Open 7 Days a Week

Specializing in fresh cut flowers and dried arrangements.

MILTON SQUARE
2262 Como Avenue at Carter, St. Paul

644-7535

Mon-Fri 10-6 • Sat 10-5 • Sun 10-3



ST. ANTHONY PARK

Steinhauser honored

Brigadier General Fredric R. Steinhauser was recently honored by the State of Minnesota at a memorialization ceremony at Camp Ripley. He was selected as one who distinguished himself in the service of the Minnesota National Guard. Of his 37 years of military service, 12 were on active duty during World War II and the Korean conflict. A permanent brass plaque will be placed in the court of honor at Camp Ripley. Steinhauser and his wife, Joan, have lived in St. Anthony Park for 35 years. He is a retired University of Minnesota professor.



Fredric Steinhauser

Leisure Center offers activities for seniors

Do you know where you can spend a few enjoyable hours on Wednesdays each week? At the community senior citizens' group at St. Anthony Park Leisure Center that meets at the Methodist Church. Some who attend just enjoy visiting, a large group play cards, others attend an art class, while others sew on crafts and projects for Ramsey County Social Services. A dinner is served at noon for \$3, followed by a program. New members are always welcome. Call Eldora Rasey, 644-8188, for more information.

"Holiday Lights" Day Nov. 21

Mayor Jim Scheibel will be on hand at noon, Sat., Nov. 21, on the St. Anthony Park Library lawn to light the ceremonial holiday tree, marking the beginning of the holiday season for St. Anthony Park Merchants and Professionals.

Other events that day include special sales, the MTC Art Bus (sponsored by St. Anthony Park Bank), which will shuttle shoppers throughout the Park, and a silent auction and dinner at 6:30 p.m. at Mama D's restaurant in Baker Court.

Call Bridget Faricy, executive director of the St. Anthony Park Merchants and Professionals Association, 645-2366, with questions.

United Church of Christ annual bazaar

This year's bazaar on Thurs., Nov. 12 at St. Anthony Park United Church of Christ, 2129 Commonwealth Ave., will have a Scandinavian touch. There will be toys, baked goods, Hardanger, Christmas ornaments, pecans,

peanut brittle, old fashioned stuffed monkeys, quillows (combined quilt and pillow), collectibles, attic treasures, and more for sale from 10 a.m.-2:30 p.m.

Lunch will be served from 11:30 a.m.-1:30 p.m. at a cost of \$4 for adults; \$1.75 for children.

LNTS sponsors two speakers from South Africa

Two experts on South Africa will speak at Luther Northwestern Theological Seminary on Fri., Nov. 13, 7-9 p.m.

Dr. Wolfram Kistner and Regina Farisani will speak on the topic, "Suffering and Hope in South Africa: A Challenge to the Churches."

Kistner is co-director of the Ecumenical Advice Bureau in Johannesburg and the retired director of the Department of Justice and Reconciliation of the South African Council of Churches. He played a key role in the formation of the Kairos Document in 1985, which declared apartheid contrary to the Christian faith. The South African government, however, characterized Kistner as "ceaselessly planning strategies of resistance to the government."

Regina Farisani has long been an active participant in the movement to resist apartheid. She and her husband and three children fled South Africa in 1987 to escape further persecution because of their work. Currently she is a graduate student at San Francisco State University.

A goal of their speaking tour is to examine issues of racism in the United States, as well as South Africa.

The free event will be in Northwestern Hall, 2481 Como Ave. Call 641-3451 or 641-3487.

Hampden Park Foods

928 Raymond Ave.

646-6686

November Specials

🍂 Organic Pumpkins and Squash—\$.69/lb.

🍂 Organic Russet Potatoes—\$.59/lb.

🍂 Whole Wheat Pie Crust—\$2.99/2 pak

🍂 Fresh Morris Turkeys—\$1.69/lb.
(ORDER BY NOV. 20)

Holiday Gifts Items
Arriving Daily!



When people are treated right you can see it in their faces.



If the women and their children who visit University Park Physicians leave smiling, it is probably because we treat them differently. For one thing, our board-certified family doctors specialize in treating the "whole" person, in caring for a patient's mind, heart and spirit, as well as her body. That's why our prescriptions are as likely to include stress management, counseling, nutritional evaluations, exercise, even acupuncture as traditional cures. Visit the women physicians at University Park Physicians at the University Park Medical Building in St. Paul (next to HealthEast Midway Hospital). Call 641-1202. A different approach to medicine could be just right for you.

**University
Park
Physicians**

A Wellness Center For Women & Children

Thanksgiving lunch for seniors

A turkey luncheon with all the trimmings will be served to senior citizens on Thurs., Nov. 19, at noon, in the cafeteria at Murray Junior High School, 2200 Buford Ave. Entertainment will follow the luncheon. Cost is \$2.20. Call 293-8738 to make a reservation.

Community Ed news

Community Education has arranged a trip to the Fanny Hill Dinner Theatre on Tues., Dec. 8, to see *Lend Me a Tenor*. Reservations must be made by calling 293-8738. Call for more information and a schedule of pickup times.

A holiday shopping tour to the Mall of America has been arranged by St. Anthony Park/Merriam Park Community Education for Tues., Nov. 10.

The Community Education office is looking for a high school student, at least 16 years of age, interested in part-time employment. Call Dan Berchem at 293-8738.

The next meeting of the St. Anthony Park Community Education Advisory Council will be held on Mon., Nov. 16 at 7 p.m. at St. Anthony Park Elementary School, 2180 Knapp St. All those interested or concerned about the programs/classes being offered by Area 1 Community Education are welcome.

South St. Anthony Rec Center

The South St. Anthony Booster Club will meet at the recreation center on Mon., Nov. 2, at 7 p.m. Discussed will be upcoming grant proposals and events. New members and new ideas are always welcome.

Steve will continue to host gym activities after school for ages 6-11, from 4:30-5:30 p.m. New games will be explored and old favorites played.

Students in grades 8-10 may register at South St. Anthony to participate in the citywide Junior Royalty program. Candidates from recreation centers throughout the city will compete for the titles of King Frost, Queen of the Snowflakes, Prime Minister, Lady-In-Waiting, and Wind Prince and Princesses, to reign during the St. Paul Winter Carnival. The first step is to pick up and return the candidate applications. This is a way for teens to represent the center and meet other teens citywide.

Parent-Child Playgroup continues to meet at South St. Anthony on Wednesday mornings, 10 a.m.-noon. Parents and their toddlers are invited to attend.

For more information, call South St. Anthony, 890 Cromwell, 298-5770, Monday through Thursday, 4-8 p.m.

Midtown parking lot opens

Join developer Chuck McCann and Councilmember Paula Maccabee for hot cider, cookies and a deli-lunch (courtesy of the Update Co.) to celebrate the completion of the first parking lot development at the Specialty Building on the SE corner of Raymond and University. The event is planned for Thurs., Nov. 5, 11 a.m.-1 p.m.

Barber shop has new owner

St. Anthony Park Barber Stylists will reopen on Tuesday, November 3rd, under new management. The shop has been purchased by Sandy Daust, a hairstylist who has been working at Campus Barbers in Dinkytown.

Daust, who has been barbering for 14 years, says she is starting out alone as the owner, manager and stylist. She says she hopes business will allow her to expand.

The shop, at 2311 Como Ave., is Daust's first venture into business ownership. The store's hours will be Tuesday - Friday 8:30-5:30, and Saturday 8:00-3:00.

New food service business opens

A new store which "serves people who serve food" opened on September 14th at 931 Vandalia. Jack MacKimm, owner of Food Service Cash and Carry, says that his store caters to restaurants, caterers, bulk food groups, church groups, and is also open to the public.

The store sells bulk food in more manageable amounts than wholesalers. They carry canned foods, as well as frozen and refrigerated items, cleaning supplies, and paper goods.

Food Service Cash and Carry is open 9 a.m.-5 p.m. Monday through Friday, and 9 a.m.-2 p.m. on Saturday.

Foslien wins award for tapestry

St. Anthony Park resident Joanna Foslien won an award from the Handweaver's Guild of America at the statewide conference of the Minnesota Federation of the Handweaver's Guild and Fiber Artists in September.

The tapestry, titled "Midnight Sun II" was the first she's shown, Foslien said. The piece took her two years to complete.

Foslien, who has been weaving for 15 years, describes the piece as similar to a time lapse photo of the sun's motion across the sky, with the landforms below reflecting the motion of the sun. She said she got the idea from a photo in a geography textbook when she was in college.

QUALITY CARING CRAFTSMANSHIP

With your special desires in mind



Specializing in remodeling and renovation of older homes

Tectone Construction

Call Ben Quie in the Park at 645-9967

Tectone is Biblical Greek for Carpentry

LICENSED • BONDED • INSURED

Your business deserves the professional and personal attention of an experienced Bank and Banker. Let Park Bank provide you with a selection of products and services to cover all your business needs.

Contact: Rick Beeson or Galen Cadle
(612) 647-0131

ParkBank

St. Anthony Park State Bank

2265 Como Avenue • St. Paul, MN 55108
Member FDIC

When its time
for a
"For Sale"
sign in the yard,
make sure it says
"Knudsen Realty".
That way you will know
the sign will soon say
"Sold"

STEVE TOWNLEY
KNUDSEN REALTY • 644-3557

WEEK NIGHTS ARE SPECIAL

Week nights are a special time in Muffuletta's kitchen as our chef's prepare their favorite dishes. Come try them all . . .

MONDAY - RAVIOLI "DEL GIORNO"	\$8.95
Homemade ravioli of the day stuffed with delicacies from our pantry - varies from time to time - but always a treat	
TUESDAY - POLLO RIPIENO	\$10.95
Rolled boneless chicken stuffed with tasty surprises - such as - fresh spinach - ricotta cheese - chopped pistachios - fresh herbs - maybe a "whim" of the chef.	
WEDNESDAY - LASAGNA "BOLOGNESE"	\$8.95
As prepared in the traditional style of Bologna, Italy - and now Muffuletta's kitchen	
THURSDAY - "PESTO NIGHT"	\$8.95
Homemade pestos of every description tossed with the chef's choice of pasta.	
FRIDAY - FRESH FISH "EN PAPILOTTE"	Varies
Fresh catch of the day baked in parchment - always a seafood surprise.	

Every "Week Night Special" is served with a Muffuletta salad and freshly baked bread with herb butter.



2260 Como Ave. on Milton Square 644-9116
(Take I-94 to 280, exit on Como and head East . . . 6 blocks)

CRIME-PROOFING YOUR LIFE

With frightening crimes becoming an increasingly ugly feature on Twin Cities' nightly news, the St. Anthony Park Association will endeavor to keep you and our neighborhood as secure as possible. On November 10, St. Paul City Councilmember Paula Maccabee and neighborhood crime prevention and outreach organizer Ceese Stickles will help you decrease the odds of becoming a statistic. Crimewatch programs, anti-violence forums, neighborhood crime counts as well as information on Maccabee's city-wide initiative to change the way St. Paul builds and designs its public spaces to prevent crime will be discussed.

LIGHT UP THE PARK

The St. Anthony Park merchants will flip the switch on their white holiday lights on November 21. Park residents are encouraged to string lights around their own homes (remember more is not necessarily better!) to foster a beautiful neighborhood holiday spirit.

Tuesday, Nov. 3: SAPA Board meeting 7 p.m., Langford Park Rec Center
Tuesday, Nov. 10: Social hour, 5:45 p.m.; Dinner 6:30; program 7:30 p.m.
St. Anthony Park United Church of Christ
2129 Commonwealth Ave.

Dinner cost \$5 for SAPA members, \$6 for non-members and \$4 for children. Call Linda at 770-8097 to confirm or cancel reservations. Free babysitting is available.

Keep December 8 open for the Park's Annual Holiday Dinner!



St. Anthony Park Association

President: Christy Myers
647-0183

Publicity: Emily Blodgett
647-9684

District 10 approves revised Lyngblomsten expansion



VIEW FROM MIDWAY PARKWAY

\$100 OFF

Any movie or game rental with this coupon Monday-Thursday through November 31.

FREE MOVIE RENTAL

for first rental on a new membership with this coupon through November 31.

VIDEO AND VCR RENTALS • OPEN 7 DAYS A WEEK

2233 Energy Park Drive at Raymond
in Park Crossing, St. Paul

646-8745

By Lee Ann Owens

A revised, reduced-size expansion proposal for the Lyngblomsten Health Care Facility received a warm reception from the District 10 Council and a group of 25 residents.

During its October 20 meeting, the council unanimously voted to recommend approval of the plan with the contingency that every reasonable effort be made to construct a berm next to the existing north parking lot of the campus.

District 10 council member, Dennis O'Rourke, referred to the May, 1988, meeting minutes in which Lyngblomsten's president,

Wallace Hauge, had stated a berm and bushes would be added to the north parking lot.

According to Hauge, drainage had been a problem for planting the area. "I don't see that as a big issue."

Lyngblomsten's three story, 60-unit, 60-resident plan is slated to occupy the site currently housed by the unoccupied senior center. Suggestions heard from concerned neighboring residents were considered in designing the downscaled new building, according to Hauge.

During a presentation to the District 10 Land Use Committee on October 13, Hauge said. "We virtually have gone back to the drawing board. We feel we have a

building that fits very well into the residential neighborhood."

The proposed plan which requires no variances would consist of an L-shaped building on the corner of Midway Parkway and Pascal Street. A total of 36 parking spaces would be provided with 29 below grade and the remaining seven in a lot to be downscaled from its current number of spaces next to the senior center.

The facade has a varied projection of living areas with extensive glasswork and same color brick as used on Lyngblomsten's other buildings. "It's going to relate well to the rest of the campus [and] to the residential neighborhood," said architect Steve Patrick.

The revised plan stems from a previous proposal for a five-

Lyngblomsten to 11

To Your Credit

Financial news from your neighborhood Norwest banker

Strengthen your savings plan

Used to be some folks thought the best savings plan was to bury a few bucks in the backyard. Unfortunately, even the most fertile soil failed to make that money grow.

Today, investors have many sound options to help them make the most of their money. According to Mary Ann Bown, Personal Banking Officer, University-Midway Office, "Everybody needs a savings plan. Whether you have a little or a lot to set aside, there are savings alternatives that are right for you."

Understanding your financial goals

- Identify what you are saving for. Retirement? Your children's college education? Or a major purchase, like a home, car or boat?
- Know your timetable. When do you want this money available?
- Determine how much you want to save. Do you plan to add to it in the future?
- Consider your need for liquidity. Do you want access to the money you invest at all times?
- Set your priorities. Do you prefer the safety of FDIC insurance or the potential for long-term growth?

"CDs are popular with those who want guaranteed rates of return, FDIC insurance and flexible terms," says Bown. "Of course, a substantial interest penalty is required for early withdrawal."

Another option is money market savings accounts, which provide convenience, liquidity and safety. "They're ideal for those seeking competitive money market interest now, plus some access to funds through automatic teller machines, by check or with telephone transfers," Bown adds.

"No matter what your goals are, it's important



Mary Ann Bown, Personal Banking Officer, University-Midway Office, one of your neighborhood Norwest bankers

to work with someone who is familiar with a wide range of savings options," says Bown. "What may be appropriate for one person may not necessarily be the best plan for another."

To find out how Norwest can help you strengthen your savings plan, see your neighborhood Norwest banker today.



University-Midway Office
3430 University Avenue Southeast
Minneapolis, MN 55414
627-3400

TDD for hearing impaired 291-4718

SOUTHEAST PAINTERS

379-0483

INTERIOR EXTERIOR

HONEST
FAST
CLEAN

EXPERT
WORK

QUALITY
WORK
AT THE
BEST
PRICE IN
TOWN

LICENSED • BONDED • INSURED



BOOMERANGS

Consignment Clothing for Children & Maternity

We specialize in namebrand clothing, toys, & accessories infant - size 14.

We also accept your children's gently worn, out-grown garments (maternity, too) in return for 50% of the selling price.

2230 Carter Ave • Milton Square
Second Level • 644-6046
Open Tues-Sat.

School News

Holy Childhood

To commemorate the feast of St. Francis of Assisi, Holy Childhood School held a special service on Mon., Oct. 5. We assembled on the lawn with parents and pets. What a menagerie! Dogs, cats, birds—even snakes and gerbils—all received a blessing from Father Gordon Doffing.

On Oct. 7 Holy Childhood School had its annual marathon to raise money for extra activities such as field trips, classroom equipment, and special assembly speakers. The lower grades walked to Como Park and the junior high walked around Como Lake. The day was rainy but Holy Childhood students marched on. After the rain, the rainbow, right? We're hoping for the pot-o-gold at the rainbow's end. Our school goal is \$6,000. At noon the Home & School provided a luncheon for all in the school cafeteria.

The eighth grade students and their parents attended high school orientation in the school cafeteria on Wed., Oct. 14. Representatives were present from St. Agnes, St. Bernard, Cretin-Derham, Hill Murray, St. Thomas and Visitation high schools. The schools will also feature an evening open house for prospective students and their parents.

Oct. 19 was the date for our first Young People's Concert. Harpist, Andrea Stern, was the guest artist. The program was both informational and entertaining. Some famous historical figures like King David, Marie Antoinette, Benjamin Franklin and Harpo Marx were harpists too.

Megan Brady & Matt Davini

Falcon Heights Elementary

Many people have acted in a play, whether it was a small school one or a big Broadway production. However, not very many people have tried to imitate shapes and try to form themselves into a triangle or a square.

That is exactly what students at Falcon Heights Elementary School are doing with their "artist in residence," actress Jessica Zuehlke. She has been teaching the students about changing feelings into shapes and changing shapes into

feelings. Jessica has students make themselves into shapes and try to pose as a certain feeling. She also has students do exercises to tone their muscles.

Instead of focusing on just plain acting, Jessica has the students work more on feelings. She also has them try to remember dreams and then silently act them out.

All the students in Falcon Heights School have class with Jessica once a week for six weeks. Students enjoy their time with Jessica and look forward to class.

Catherine Mackiewicz

St. Anthony Park Elementary

St. Anthony Park elementary had its annual student council elections. You must be in sixth grade to run for office. All the students vote on the candidates. The officers are: Dan Plagens (president), Scott Barrick (vice-president), Dan Moua (secretary), and Trygve Hansen (treasurer). The executive board is: Marie Lister (runner-up for president), John Kroska (runner-up for vice-president), Allana McNerney (runner-up for secretary), and Niki Stewart (runner-up for treasurer). The student council also includes representatives from each classroom. They meet once a month to discuss projects and learn about running a meeting. The projects this year include selling school sweatshirts and putting together a yearbook.

The first and second graders went to see a performance of the Shanghai Acrobats and Shanghai Dance Theater at the Ordway Theater on Oct. 14. On that same afternoon we had an all-school assembly with a musical group called The Maroons, a trio that sings Caribbean music. Students learned about the variety of music from the Caribbean as well as the variety of instruments. Everyone learned something about geography and history as well.

Second grade teachers set up the glass case by the school office. The authentic Norwegian costumes and the books were lent by the Jon Leiknes family, who are studying in the United States for several years and who live in our neighborhood.

This year we again have school guides for visitors. Fifth and sixth graders are trained to take visitors around and show them classrooms, the library and other facilities and programs.

The band and orchestra are starting their instruction. There are 55 members in the orchestra and 55 members in the band. They take weekly lessons and begin to practice, after the first of the year, for the annual spring concert.

St. Anthony Park School was the only school in the district to

receive a perfect score on our fire drill. All the children were out in a minute and half!

Our principal, Mr. Tom Foster, would like to say to the many parents who came to our open house, THANK YOU!

Berit Griffin

Murray Junior High

The first few weeks at Murray Junior High have gone very smoothly.

Thanks to everyone who helped with the garage sale, by giving donations or doing other services. Murray was able to raise over \$800 from it.

American Education Week is November 15-20. Parents and others are welcome to come and visit the school that week.

Parent and teacher conferences are Nov. 5 & 11 from 5:30-8:30 p.m. If you would like to come on the 5th, please call for an appointment. If you would like to come on the 11th, no appointment is necessary.

The SteppingStone Theater club is doing well. The members meet three times a week. Their performance is on Mon., Nov. 16 and they will also hold a senior citizens' luncheon with a performance afterward on Nov. 19.

Every Wednesday after school a number of students meet to be trained in peer mediation. It is going very well.

Emily Foster

Chelsea Heights Elementary

This month at Chelsea Heights Elementary, lots of things have been going on. The kindergarten classes went on a hunt for a gingerbread man, and on the way they met all the people who work in our school. Then they each got a bite of the gingerbread man.

The second and third grade went to the Ordway to see the Shanghai Acrobats.

Officer Heider of the D.A.R.E. Program came and talked to the sixth graders to see how much we remembered about the Drug Abuse Resistance Education Program.

Just this year our science teacher, Ms. Tauer, has received some new learning materials, F.O.S.S. kits. F.O.S.S. stands for Full Option Science Systems. With the F.O.S.S. kits, it's more experiments, and more hands-on; and the kids are motivated to learn more.

The 20 students in the Cheetah Band are getting ready for a winter concert. There are lots of kids in beginning band this year since we are including the 4th graders. Ms. Paige is the band director.

Karolyn Stoerzinger

More School News on p. 16

COMO RAYMOND AMOCO



Convenience store and gas open 24 hours
Mechanics on duty 7 a.m. - 11 p.m.

2102 Como Avenue at Raymond • 646-2466

642-1838

BARGAIN UPHOLSTERY

Call for free estimate
797 Raymond at University

**Evenstar
Bookstore**

644-3727
2401 Univ. Ave. W.

**Books & Supplies
for the
Journey Within**

10% OFF all non-consignment items with this ad through 10-29-92.

New and used books for a broad range of mystical and spiritual paths, including tarot, shamanism, Wicca, Buddhism, and yoga. We carry tarot decks, crystals, jewelry and temple supplies. Let us help you with special orders. Park free after 4:30 pm.

Give Thanks With Us.

Thanksgiving Day Worship Service

Thursday, November 26 at 10:00 a.m.

90th Anniversary Celebration Service

Sunday, November 22, 11:00 a.m.
2323 Como Ave. W. 645-0371

ST. ANTHONY PARK LUTHERAN CHURCH

REJOICING IN OUR 90TH YEAR!



One owner, well-maintained home in North St. Anthony Park. 3 bedrooms, 2 baths. Large main floor family room has ceiling to floor windows and built-in storage space. Living room fireplace, central air, two-car attached garage.

Nancy Meeden

227-9144

Joyce McCutcheon

636-9000



Clarification: In most circumstances employment at the University of Minnesota is still a requirement for purchase of Grove homes.

Ellen

ANDERSON

For State Senate
DFL-Labor Endorsed



**THANKS, ST. ANTHONY PARK, FOR YOUR SUPPORT IN THE PRIMARY!
VOTE ON NOVEMBER 3!**

FOR VOTER INFORMATION CALL: 266-2171 (weekdays)

Prepared and paid for by Volunteers for Ellen Anderson; 921 Cromwell Ave., St. Paul, MN 55114; Mariko Tanaka, Treasurer; Co-Chairs Dr. Jane Hodgson, Scott Adams, Barb Kucera and Lee Ann Tallbear.

When you're gone, everything will go to the loving children who survive you. Or will they?

Unfortunately, we cannot assume that our children will outlive us. We need to consider all possibilities during estate planning. So it helps to have the guidance of someone who has made estate planning a specialty.

Ahlgren & Ahlgren

Attorneys at Law, 2239 Carter Avenue, St. Paul, Minnesota 55108. (612) 646-3325



COMO PARK

Job Corps needs neighborhood advisors

The Hubert H. Humphrey Job Corps Center Neighborhood Advisory committee has eleven

openings. The committee, under the aegis of the City of St. Paul, fosters communication between the Job Corps and adjacent community. Members review the operation of the Job Corps and address concerns raised by the neighborhood. The committee meets on the second Thursday of each month at 7 p.m. at the Job Corps Center, 1480 N. Snelling. For more information, call Greg Redmon, Job Corps director, 642-1133.

experience and PSIA Certification. If selected, all instructors must attend an orientation on Nov. 2 and Winter Rescue/CPR training, taught by Parks & Rec staff, prior to the start of the season.

Como Golf Course also has 7K of groomed trails for cross country skiing and a 2K lighted trail for night skiing open until 11 p.m..

LAUDERDALE

La Leche League meets

Join the Como-Midway La Leche League on Tues., Nov. 24, 7 p.m., to discuss "The Art of Breastfeeding and Avoiding Difficulties." For meeting location and more information call Jeanne at 644-0302 or Kathy at 645-4953.

Ski lessons at Como Park; instructors needed

The St. Paul Division of Parks and Recreation will offer cross country and downhill ski lessons this winter.

Group cross country lessons are given for beginning or advanced skiers on Saturdays or week nights at Como Ski Center. Cost is \$15 for two 1 1/2 hour lessons. Equipment rental is \$6. Lessons begin Dec. 5 and run in two-week cycles through Feb. 8. Lessons for groups can also be arranged.

Downhill group lessons are given on Saturdays or Monday, Tuesday, or Wednesday evenings. The one-hour downhill lessons begin Jan. 9 and continue for six weeks. Cost is \$35 through Dec. 24; \$40 after that date. Rental rate for lessons is \$20.

For more information or a registration brochure, call 292-7445.

Those interested in being a ski instructor are urged to call Howard Bell at the same number. Instructors earn from \$5 to \$9.50 per hour based on

"Diggers Delight" store to open at Goodwill

Savvy shoppers willing to rummage for bargains will have a field day at "Diggers Delight," the new bulk merchandise store opening Nov. 4 at Goodwill/Easter Seal headquarters, 2543 Como Ave. (west of Hwy. 280).

Clothing and housewares not suitable for sale at Goodwill's eight Twin Cities retail stores will be displayed in bulk and sold either by the piece, or, in some cases, by the box or barrel. Typical prices will include clothing and other textiles, shoes, books and electrical components at 25 cents per item; and furniture at 50 cents per item. Bulk prices include five dollars per box or ten dollars per barrel of items.

Donations of good condition men's, women's and children's clothing are needed at the Goodwill drive-through donation center.

Contributed clothing and donated usable household items are sold at Goodwill stores to support nonprofit job training, placement and related services for people with disabilities or disadvantages.

The drive-through center is open 9 a.m.-5 p.m., seven days a week. For more information call 646-2591.

Representative

Alice Hausman

For the House
DFL/Labor Endorsed • District 66B

"This generation has a responsibility to future generations to care for the environment."



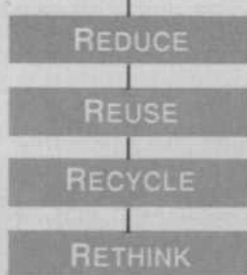
Prepared and Paid for by the Hausman Volunteer Committee, Wanda Lorentzen, Treas., 1447 Chelmsford, St. Paul, MN.

Household Hazardous Wastes!

are products commonly found in the home, such

as paints, insecticides and weed killers, that can cause injury or pollution if used or disposed of improperly.

To lessen this risk:



- Buy only what you need
- Consider buying environmentally safe products
- Store products in original containers away from children and pets

Collection Facility for Ramsey County Residents

Wastes that cannot be managed at home may be brought to the Household Hazardous Waste collection facility - **open year-round** - located at DYNEX Industries, 4751 Mustang Drive, Mounds View, 1/2 mi. north of Hwy 96, off Old Hwy 8.

Hours - November - March	
Friday	12 noon - 7 p.m.
Saturday	10 a.m. - 5 p.m.
Sunday - Thursday	Closed
Closed: Christmas Day and New Year's Day	

Call 633-EASY for information on safely managing Household Hazardous Waste.

Protect the Earth

Call 292-7608 for a recorded message of hours/dates open, wastes accepted & directions.

The public is invited to participate in the life of

Luther Northwestern Theological Seminary

2481 Como Ave., St. Paul

Oct. 28 - Nov 20

"At A Close Range: Minnesota Portraits, 1984-1990"
An art exhibit featuring the work of photographers James Crnkovich and Peter Latner.
Faculty/Staff Board Room, Campus Center

Nov. 1 "Festival Celebration"

A celebration of partnership programs between All Saints Lutheran Church, Minnetonka, and St. Peter's A.M.E. Church, Minneapolis. Choirs from both congregations. 4:00-5:15 p.m., Chapel of the Incarnation

Nov. 13 Global Forum

"The Nicaraguan Church and the Revolution," Fr. Joseph Mulligan. 12:30-1:10 p.m. Campus Center

Nov. 13 Focus on Africa

"Suffering and Hope in South Africa: a Challenge to the Churches." A program with people from Africa telling about Africa featuring Dr. Wolfram Kistner and Regina Farisani. Free. 7:00 p.m. Northwestern Hall Auditorium

Nov. 16 Global Forum

"The Seminaries of East Asia," Luther Northwestern President David Tiede, 12:30-1:10 p.m. Campus Center

For more information, Public Relations (612) 641-3451 or the Luther Northwestern "Welcome Line" (612) 641-3533 To arrange for group tours, call (612) 641-3399.

Lyngblomsten from 8

story, 120 unit more institutional looking facility which met strong opposition from a number of surrounding residents concerned over the changes building would make in the neighborhood.

There will be less traffic around the new, smaller building. A combined staff of five to six workers will be required to run the addition. An additional ten people per day are projected to come to the new building as visitors.

"We tried to minimize an increase in traffic, need for parking, velocity of people coming and going. We also think it [the new building units] will be easier to market," Hauge said.

The building will house a total of five two-bedroom units, three efficiency units and 52 one-bedroom units. "The units are a little bit larger. That will assist us in the market," Hauge said.

The senior center portion of the building included in earlier building discussions was eliminated. A senior center outreach program will be conducted in other areas, Hauge said.

Supportive community involvement was a concern for Hauge. "We've had so many negative comments while we were doing this, any positive ones would be appreciated."

Feedback given to Hauge by viewers of the plan at both meetings was favorable. At the

land use meeting a neighboring resident, Paul Husby, said, "It [the plan] looks excellent, the pitched roof, what you've done to the facade and no additional driveways."

Once strongly opposed to Lyngblomsten's plans, Husby added the building looks "quieter, lower density. Architecturally it will fit in. Looks like it will be a pretty good change as long as the building has to change."

Another local resident, John Tiesse, said, "Looking at the site plan, I commend you. You built the building to fit in with the site."

Fundraising for the project has begun, and Hauge said he hopes to break ground on the project in late spring of 1993.



RE-ELECT

Mary Jo McGuire

A New Tradition Of Effective Leadership

State Representative 54A - DFL
Falcon Heights, Lauderdale,
Roseville and St. Anthony

Prepared and paid for by Volunteers for McGuire,
1529 W. Iowa, Falcon Heights 55108



Life in the Church: Come and Share

BETHANY BAPTIST CHURCH

Skillman and Cleveland. 631-0211
Sunday School: 30 am
Sunday Worship: 11 am
Pastor Bruce Petersen

COMO PARK LUTHERAN CHURCH

1547 Sheldon St. at Hoyt Ave. 646-7127
CPLContac Dial-A-Devotion 644-1897
Sunday Worship: 8:30 and 10:45 am
Communion first and third Sundays
Education Hour for all ages: 9:30 am
Nursery provided 8:15 - noon
Thanksgiving Eve Service 7 pm Nov. 25

CORPUS CHRISTI CATHOLIC CHURCH

2131 No. Fairview at County Road B. 639-8888
Saturday Mass: 5:00 p.m.
Sunday Masses: 8:30 and 10:30 am

MOUNT OLIVE EV. LUTHERAN CHURCH (A WELS Congregation)

"THE CHURCH WITH A SMILE"
1460 Almond at Pascal. 645-2575
Sunday Worship: 9 am
Sunday School and Bible Study: 10:30 am

PEACE LUTHERAN + LAUDERDALE

Walnut at lone. 644-5440
Sunday Worship 10:30 am
Eucharist 1st and 3rd Sundays
Sunday School and Bible Class 9:15 am
Wednesday Worship: 7 pm
Thanksgiving Eve Holden Vespers 7 pm Nov. 25

ROSE HILL ALLIANCE CHURCH

Roselawn at Cleveland. 631-0173
Sunday Worship: 8:30 and 11 a.m.
Sunday School 9:45 am
Sundays 6 pm Sr. Hi Group
Wednesday Int'l. Women's American Culture Class 12:30 pm (Sept. - May)
Wednesday 6:45 pm conversational English class
Wednesday Jr. Hi Group & Awana 6:45 pm (Sept. - May)
Thursday noon University Graduate Student Lunch and Bible Study

ST. ANTHONY PARK LUTHERAN

Como and Luther Place. 645-0371
Sunday Worship: 8:45 and 11 am. Nursery at 8:45
Communion first and third Sundays
Adult Education and Sunday School 9:50
Thanksgiving Day Worship 10 am
Sunday, Nov. 22 90th Anniversary Celebration.
One worship service at 11 am

ST. A.P. UNITED CHURCH OF CHRIST

2129 Commonwealth at Chelmsford. 646-7173
Sunday Worship: 9:30 am
Sunday Education Hour for children, youth and adults: 10:45 am
Nursery Care provided all morning
Nov. 1, 9:30 am All Saints Day
Marilyn Beckstrom preaching on, "Celebrations"
Scripture - Hag. 2: 1-9, Ps. 65: 1-8, Thes. 1: 5-12,
Luke 19: 1-10
Celebration: Sharing our Christmas with Others!

Nov. 8, 9:30 am Mark Kennedy preaching
Scripture - Zach. 7: 1-10, Ps. 9: 11-20, 2nd Thes. 2:13 - 3:5,
Luke 20: 27-38

Celebration: Sharing our Christmas with Others!

Nov. 15, 9:30 am Guest preacher Ted Bowman
Scripture - Mal. 4: 1-6, Ps. 82, 2nd Thes. 3: 6-13,
Luke 21: 5-19

Nov. 22, 9:30 am Thanksgiving Sunday -

Mark Kennedy preaching

Scripture - 2nd Sam. 5: 1-5, Ps. 95, Col. 1: 11-20,
John 12: 9-19

Special Harvest Celebration

Nov. 25, 7:30 pm Community Thanksgiving Service

Nov. 29, 9:30 am 1st Sunday of Advent -

Rebecca Halbe preaching

Scripture - Isaiah 2: 1-5, Ps. 122, Romans 13: 11-14,
Mat. 24: 36-44

Intergenerational Advent Festival!

All visitors welcome. Call church for further schedule details

Rev. Dr. Patrick Green, minister

Rev. Mark Kennedy, associate minister

ST. A.P. UNITED METHODIST CHURCH

THE CHURCH WHERE EVERYONE IS ALWAYS WELCOME
Como and Hillside. 646-4859

Sunday Morning Schedule: 9:00 Morning Prayers, 9:15 Adult
Forum, 9:30 Church School and Bible Study, 10:45 Worship
Child Care provided all morning

Bible Studies: Sundays 9:30 am and 6:30 pm,

Mondays 7:30 pm, Tuesdays 1:30 pm at Presbyterian
Homes, Wednesdays 9:30 am

Call the church for further information

Fridays, 7-10:45 pm Youth Activity Night

All youth in grades 7-12 welcome

Wed., Nov. 25, 7:30 pm Thanksgiving Eve Service at
St. Anthony Park United Church of Christ

ST. CECILIA'S CATHOLIC CHURCH

Cromwell and Bayless Place. 644-4502

Saturday Mass: 5 p.m.

Sunday Mass: 10 a.m. at church (nursery provided) and
8:30 a.m. at Seal Hi-Rise, 825 Seal St. (handicapped
accessibility)

Daily Mass: 7 am at the Parish Center

Thanksgiving Day Mass 9 am at church Nov. 26

New Holy Day Mass Schedule: 7 am at church, 5:30 pm at the
Hi-Rise. (No 12:05 noon mass)

ST. MATTHEW'S EPISCOPAL CHURCH

2136 Carter at Chelmsford. 645-3058

Sunday Schedule:

8 am Holy Eucharist Rite I

10:15 am Holy Eucharist Rite II

Nursery and child care at both services

Activities during the sermon at second service

Education for all ages 9:15 am

Oct. 30, 6 pm "Fall Fling"

Nov. 1, 5 pm All Saints Evensong

The Rev. Grant H. Abbott, Rector

The Rev. Dr. Marilyn Salmon, Priest Associate

WARRENDALE PRESBYTERIAN CHURCH

1040 Como Ave. at Oxford. 489-6054

Sunday Worship: 10:15 am (nursery provided)

Sunday Church School: 9 a.m.

Dr. Robert Bailey, Minister

continued next column

Northern Clay Center
Weavers' Guild
of Minnesota



Holiday Market Fiber Fair

Finest selection of
ceramics and fiberwork in
the Upper Midwest

Fri, Nov 20: noon to 9 pm
opening reception 6 to 9
Sat, Nov 21: 10 am to 5 pm
Sun, Nov 22: noon to 5 pm

Sale continues through
December 23

NCC: 2375 University Ave.
St. Paul, MN 642-1735

WGM: 2402 University Ave.
St. Paul, MN 644-3594

Chinatown Restaurant

Fine Chinese Cuisine
Wine & Beer
Eat In -- Take Out

"Winner of Best Chinese"
2 Years in a Row!
Twin Cities Reader

New Management
15% Dinner Discount
Valid thru December '92
with this coupon

North East Corner of
Snelling & Larpenteur

Hours:

Mon. - Thurs. 11 - 9:30

Fri. 11 - 10, Sat. 12 - 10

Sundays 5 - 9

644-9194

PARK SERVICE

TIRES • BATTERIES • EXPERT REPAIR
CERTIFIED MECHANICS

The **76** Station in the Park
2277 Como Avenue 644-4775 • 644-1134

Ann McCormick's Hair Styling Salon



Tuesday-Saturday
by appointment

644-3926

1540 Fulham, St. Paul (in St. Anthony Park)

INNOVATORS

Additions Repairs Renovations

Bathrooms • Offices
Kitchens • Ceramic Tile

Local References

771-1268

Licensed, Bonded and Insured

Arts Calendar

Holiday Market

The Northern Clay Center and the Weaver's Guild will hold a Holiday Market sale from Nov. 20-Dec. 23. The two non-profit arts organizations are located kitty-corner from each other at Raymond and University.

Available at the Northern Clay Center, 2375 University Ave., will be contemporary functional pottery, including teapots, bowls, pitchers, cups and saucers, platters, etc. Contemporary handmade jewelry, sculpture, and gift certificates may also be purchased.

The Weaver's Guild of Minnesota, located in the Chittenden-Eastman Building at 2402 University Ave., will have handwoven rugs, tableware, scarves, clothing, baskets, hand-spun yarns and other work.

A free opening reception for the Holiday Market will be held at both sites on Fri., Nov. 20 from 6-9 p.m.

Music

St. Matthew's Episcopal Church's Evensong Series continues on Sun., Nov. 1, at 5 p.m. at the church, 2136 Carter Ave. The choir of St. Matthew's will perform music of Walmisley, Willan, Thompson and others. A free will offering will be donated to the Minnesota Multiple Sclerosis Society. For more information, call 645-3058.

The New Folk Collective presents two concerts in November at the University of Minnesota St. Paul Student Center, 2017 Buford:

Sun., Nov. 1, 7:30 p.m. **Steve Gillette & Cindy Mangsen and Bill Staines**, Northstar Ballroom. \$8 advance/\$9 at door.

Fri., Nov. 20, 8 p.m., **Fred Small**, Student Center Theater. \$8 advance; \$9 at door.

All concerts at co-sponsored by the Performing Arts Committee of the St. Paul Student Center. Call the New Folk Collective, 379-3962, between 3-6 p.m. Monday through Friday, to order advance tickets.

The Twin Cities Jazz Society presents **Frank Wharton's Reginald Buckner Memorial Ensemble**, Sat., Nov. 14, 7:30 p.m., at the St. Paul Campus Student Center Theatre, 2017 Buford Ave. This "Little Big Band" will perform original compositions of Reginald Buckner as well as jazz standards. \$7. \$5/members and students. For more information and ticket reservations, call Carol Simpson, 922-5487.

Music in the Park Series presents **The Rosalyra String Quartet**, with **Burt Hara**, clarinet, on Sun., Nov. 22, 4 p.m., at St. Anthony Park United Church of Christ, 2129 Commonwealth Ave.

A special concert featuring **Jack Glatzer**, violin virtuoso, will be held Fri., Nov. 6 at 8 p.m. at the same location.

Tickets for each concert are \$10 at the door; \$9 in advance; \$5 student rush.

Vida, a new trio of cello, harp and percussion will give two Saturday morning performances in Music in the Park's **Family Concert Series** on Nov. 21, 9:30 and 10:30 a.m. at St. Anthony Park Library. Tickets are \$5 for adults, \$3 for children at the door; or \$4 adults, \$2 children if purchased in advance. Tickets for all concerts are available at The Bibelot Shop and Micawber's Bookstore. Or call 644-4234.

Tapestry Folkdance Center of Minneapolis presents a **Scandinavian Dance** at St. Anthony Park United Church of Christ, 2129 Commonwealth Ave., on Sat., Nov. 21. This is the last event of a series of dance lessons that started earlier in November. Admission to the dance, featuring live music, is \$5; \$4 for Tapestry members. Call 825-3668 for more information.

Visual Art

Paul O'Connor of Falcon Heights has had a book on weaving published by Dos Tejedoras Fiber Arts Publications. *Loom-Controlled Double Weave, From the Notebook of a Double Weaver*, is an informal sharing of O'Connor's fifteen years of work with double weaving.

O'Connor is a former professor of chemistry who developed a second career in weaving. His multicolor and multilayer double-woven works have appeared in numerous exhibitions and publications. He has presented workshops and written articles for several weaving magazines. His

first book on weaving, *A Twill of Your Choice*, was published by Interweave Press.

For information on how to get his newest book, call Fiber Arts Publications at 646-7445.

The exhibit "**Korean Arts in Celebration of Life Events**," opens Sat., Nov. 7, at the University of Minnesota's **Goldstein Gallery**. An opening reception on Sun., Nov. 8, 2-4 p.m., will feature Taekwondo demonstrations and lectures on Korean topics. Featured in the exhibit are documentations of birthday celebrations and scenes from a wedding ceremony and a funeral, all showing how art forms reinforce cultural values and intensify the emotional impact of rituals. Videotapes of these celebrations will be included in the exhibit, which will run until Jan. 17.

Gallery hours at 241 McNeal Hall, St. Paul Campus, are 10 a.m.-4 p.m. Mon.-Fri.; 10 a.m.-8 p.m. Thurs.; and 1:30-4:30 p.m. Sat. & Sun. Admission is free. Call 624-7434 for more information.

The **Center for Arts Criticism** is sponsoring a day-long forum, "**Arts for Community Change**," on Thurs., Nov. 12 at the St. Paul Technical College auditorium, 235 Marshall Ave.

The event is billed as a forum for community organizers, neighborhood activists, planners, artists, journalists, educators and elected officials to learn about artists working with communities to address racism, homelessness, environmental destruction and AIDS.

Patrice Clark Koelsch, executive director of Center for Arts Criticism, explains that "this forum is quite frankly *not* about what special people artists are, or what magic they might do if your community brings them in and gives them a grant. Instead, 'Arts for Community Change' intends to take a close look at artists who are already working in their communities, to examine critically the usefulness of art and artists in supporting neighborhood action."

A portion of the program (9-11 a.m.) will be aired live on KFAI Fresh Air Radio, 90.3 FM, and phone-in participation will be welcomed. The event is cosponsored by KFAI and United Arts.

Call the Center for Arts Criticism, 644-5501, for further information and registration. A \$10 registration fee includes all materials, coffee and donuts.



MUSIC IN THE PARK FAMILY CONCERTS 1992-1993 Season

at St. Anthony Park Branch Library,
Como Ave. at Carter

Saturday, November 21, 1992 - 9:30 & 10:30 am

VIDA; Sunita Staneslow, harp, Laura Sewell, cello, Jay Johnson, percussion. A concert to celebrate the coming of winter.

Friday, January 22, 1993 - 6:15 & 7:30 pm

BOLAND-DOWDALL DUO; Jan Boland, flute and John Dowdall, guitar in "Toot and Pluck: Flute and Guitar March Through Time"

Friday, April 23, 1993 - 6:15 & 7:30 pm

THE FLYERS; Roger & Marnie Flyer in "Songs for the Whole Family"

Tickets: \$5 adult, \$3 student at door (\$4/\$2 advance purchase); 3 concert series - \$12 adult, \$6 students

TICKETS AVAILABLE AT THE BIBELOT SHOP (646-5651), MICAWBER'S BOOKSTORE (646-5506) IN ST. ANTHONY PARK. INFORMATION/BROCHURE: 644-4234

"If I must have people
working in my house,
I'd like them to be
courteous and friendly.

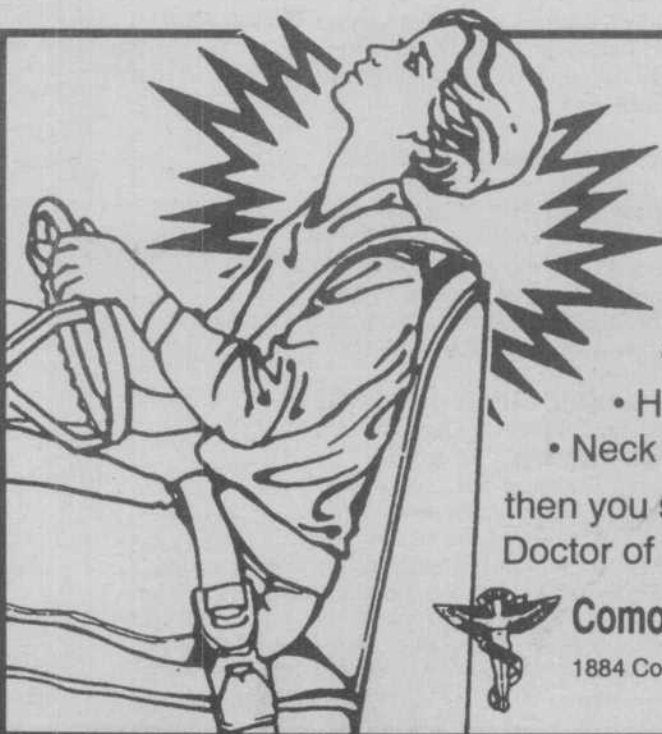
I wonder who
I should call."



We Enjoy Making Homes Better.

646-6436

MN LIC. 3700



AUTO ACCIDENTS

do occur to even the most careful drivers. If you have been in an auto accident and are experiencing:

- Headaches
- Numbness
- Neck or Back Pain
- Arm Pain

then you should be examined by a Doctor of Chiropractic.

Como Chiropractic Health Center

1884 Como Ave., St. Paul, MN 55108 • 645-8393
Across from State Fairgrounds.



Todd Hohaus, Matt Schneider and Joanna Garfinkel star in *Room Service*, being presented Nov. 6, 7, 13, 14, 19, 20 and 21 by Punchinello Players on the St. Paul Campus. Call 624-7458 for ticket information.

Lunch may be brought in or purchased in the Technical College's cafeteria for \$3.50.

The Center for Arts Criticism has received a \$74,000 grant from the McKnight Foundation. The money will be used to enable small and mid-sized Minnesota arts organizations to work with experienced writers to produce materials about the work of those organizations.

In 1993 and 1994 the Center will each year award grants of up to \$5,000 to six teams of arts organizations and writers. Groups eligible to apply for the program (called "Beyond P.R.") are those Minnesota nonprofit arts organizations with annual budgets less than \$1 million, which have operated professionally and regularly for at least two years.

Full guidelines for application will be ready later this year, but arts organizations and writers interested in being paired with an organization on a project are welcome to call the Center now at 644-5501 for more information.

John Benson, formerly of St. Anthony Park, has paintings on exhibit through Nov. 10 at Art Resources Gallery, 9th & Jackson, downtown St. Paul. Benson is a 1968 graduate of Murray High School. He now lives in Vermont.

"At A Close Range: Minnesota Portraits 1984-1990," will be on display through Nov. 20 at Luther Northwestern Theological Seminary's Campus Center, Hendon at Fulham. The exhibit, on tour from the Minnesota Historical Society, features 34 photos of people enjoying community life and culture taken by St. Paul artists Peter Latner and James Crnkovich.

Gallery hours are Sun.-Thurs., 8 a.m.-10 p.m.; Fri. & Sat., 8 a.m.-8 p.m., except when the room is in use for a meeting.

Literature

The St. Anthony Park Writers' Workshop will meet Tues., Nov. 10, 7:30 p.m., at 1486 Raymond Ave.

Drama

Georgette Lobbé-Pfannkuch's "Reader's Theater" class will present the French play *Ces Dames aux Chapeaux Verts* by Albert Acremant on Mon., Dec. 7, 7 p.m., at the Loring Playhouse, Hennepin and Harmon Avenues in Minneapolis. Free admission. The Loring Cafe will serve a French dinner that evening at 6 & 8 p.m. For information and reservations for the dinner, call Georgette (a St. Anthony Park resident) at 645-3784. Reservations for the dinner must be made by Nov. 24.

Punchinello Players open its 78th season with the classic comedy *Room Service* by John Murray and Allen Boretz. The play, one of the great comedy successes of the American Theatre, will premiere Fri., Nov. 6, at 8 p.m. Performances will also be held Nov. 7, 13, 14, 19, 20 and 21, all at 8 p.m.

Room Service deals with the attempts of a nimble-witted Broadway producer to keep himself and his cast well-fed and warm while he scrambles to find a financial backer for his latest production. The play is a frantic collage of mistaken identities, slamming doors, wistful romances, and impulsive dressing and undressing.

Performances will be at North Hall Theatre, located on the St. Paul Campus of the University of Minnesota. Tickets are \$5 for adults, \$4 for students and seniors. Group rates are also available. Tickets may be purchased at the door or by calling 624-7458.

Punchinello Players started in 1914, making it the oldest theatre in the state still running.

Sharrett's Liquors

645-8629

Call for **FAST DELIVERY**
Corner of Raymond and University



professional painters paper hangers



- Interior & Exterior Painting
- Staining & Varnishing
- Residential & Commercial
- Patching & Sheetrock Repair
- Taping & Ceiling Spray Texturing



Experienced in water damage repair
interior and exterior

Jim Larson 644-5188

Licensed • Insured • Bonded • 192237

larsen decorating



Real Estate

By Carol Weber



REALTOR

LEAD: A SECRET CULPRIT

Put lead on your list of household hazards.

Environmentalists, health care groups, and now FHA, are making this a health concern for the nineties. According to the National Lead Watch (NLW), a company that provides lead education and testing, lead is particularly harmful to pregnant women and children. Because the housing stock in the inner cities is older, the risk is higher to children who live there. Before 1977 most paint contained lead and plumbing supplies used lead solder and piping. Since 1977 the Federal Government has banned most lead-based

paint, but there are still many properties where lead may still be found in the paint, drinking water, soil and dust. As of December 1, 1992 FHA financed properties must have a lead-based paint notification signed by the buyer for homes built prior to 1978.

Homeowners can test for lead themselves or use a professional lab, which might be more accurate. Buyers and sellers can get more information by calling the lead test line at 800/531-6886. If we can be of any help in selling or buying a home, call Carol Weber at 636-2299.

body science

SPINAL MANIPULATION • NON-SURGICAL INTERVENTION • DRUGLESS
NUTRITIONAL THERAPEUTICS • AUTO, SPORT, WORK COMP INJURIES

Dr. Candace McKay Matthiae

Chiropractic Physician

2301 Como Avenue

Suite 202

St. Paul, MN 55108

644-1147

In the
Crisp Cool
of Autumn,
There's
a Glow at
The Bibelot.
Clothing, Gifts & Jewelry

**THE
BIBELOT
SHOPS**

2276 Como Avenue, St. Paul • 646-5651
1082 Grand Ave. at Lexington • 222-0321
9:30-8 Mon.-Fri., 9:30-5 Sat., 12-5 Sun.



ORDER YOUR HOLIDAY PHOTO CARDS TODAY!

And get up to 20 Cards Free

This holiday season, let yourself go with Snapshot Greetings. Send your newborn. Your family. Your pet. Or your home. Whatever makes your holiday greeting special.

Photo-Greeting Cards are 3 1/2" x 7" and come in horizontal or vertical styles to match the composition of your color negative. Mailing envelopes are included. So this year, do more than just tell your friends and relatives how you're doing. Show them.

ORDER 25 GET 5 FREE 50 GET 10 FREE
100 GET 20 FREE

- Circle the quantity, price and design on the schedule.
- Use your favorite color negative, size 110, 126, Disc or 35mm only.
- Prices based on quantity made from same negative, same design.
- Prices include matching envelopes.
- Orders received after December 7, 1992 are not guaranteed for Christmas delivery.
- Name imprinting not available.
- CAUTION—Do not cut negative strip. Indicate correct negative number. Negative strip will be returned to you.
- All cards will be GLOSSY finish only.

ALLOW 7 TO 10 DAYS FOR DELIVERY MONDAY THRU FRIDAY.



2309 COMO AVE. ST. PAUL, MN 55108 • 646-3274

ORDER FORM. PLEASE PRINT
(CIRCLE DESIRED QUANTITY & DESIGN).

SLIM-LINE COLOR GLOSSY PHOTO GREETING CARDS (3 1/2" x 7")				
Quantity	25	50	100	Add'l Cards Over 100
Price	\$15	\$25	\$45	40¢ EACH
DESIGN #	1	2	3	4

Negative # _____ Design # _____
Quantity _____ Price _____

PERSONALIZED CARDS ONLY \$5 EXTRA
YOUR PERSONAL 2 LINE MESSAGE (20 characters per line)

Name _____
Address _____
City & State _____ Zip _____

*IF DESIGN NOT INDICATED, #3 WILL BE USED.



Horizon Home Improvement
Serving the Park since 1978.

Roofing, Gutters and Siding
Replacement windows and doors
Custom kitchens
Basement remodeling

DAN ENGBRETSON-431-6222
Licensed • Bonded • Insured • C16521

Coal from 1

winter months due to gas curtailment, Delarche said, and will fire the boilers, using coal, through December 1992 to provide baseline figures for the Environmental Quality Board's review of the plant.

Delarche said that the plant will receive an average of five 25-net-ton capacity trucks of coal per day, generating one truckful of ash per each five coal loads.

Those numbers are averages as well. The plant may receive coal trucks only several days per week, Delarche said, receiving more than five truckloads of coal on some days.

If residents have complaints about trucks or coal dust, they can call the chief operating engineer at Foster-Wheeler at 625-3152, or call George Delarche at 379-1885.

The Environmental Quality Board will seek public comment on the plant during a review of its environmental impact. This "scoping" period will include advisory committee meetings and will culminate in a public hearing. The public may voice opinions at any time. Call the EQB Review Program at 296-8253 for further information. You may also request a copy of EQB Monitor, a biweekly notice of public comment periods, public meetings and governmental decisions.

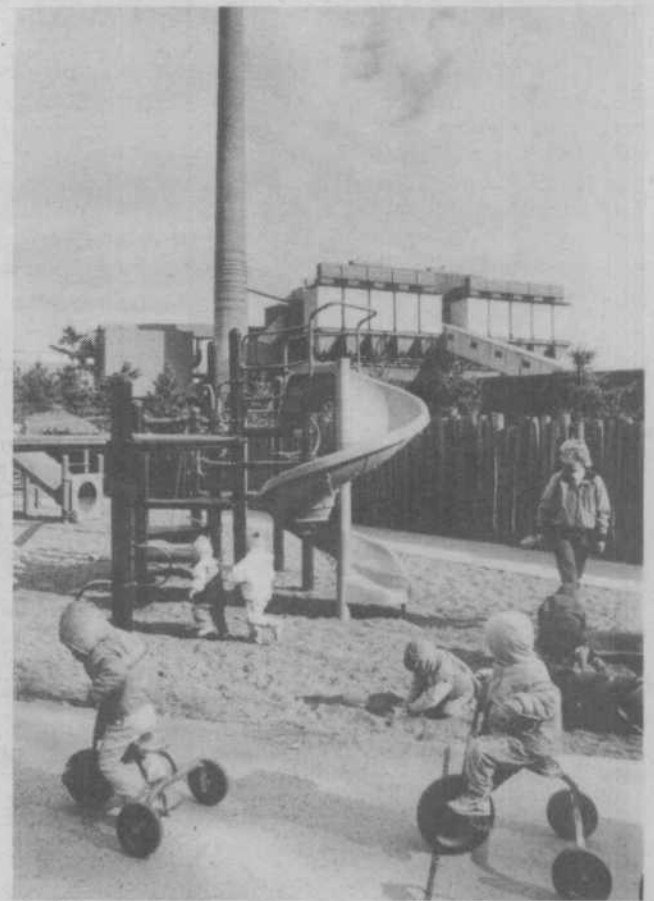


Photo by Truman Olson
Effects from the nearby coal pile and plant on children at Community Child Care Center will likely be mitigated by the proposed changes.

ST. ANTHONY PARK HOME



Thanksgiving would not be the same without a Turkey dinner with all the fixin's and most importantly the family and friends. Each resident at St. Anthony Park Home will be inviting a guest to the BIG Family


style Thanksgiving Turkey dinner on Wednesday the 25th. Also...we would like to invite everyone to stop by on the 21st to see the Heartbrob Cafe's "Rock-n-Rollers." They will be performing in conjunction with the "Holiday Lights" celebration.

2237 Commonwealth 646-7486

Speedy market

2310 COMO AT DOSWELL ST. PAUL OPEN EVERYDAY 7AM - 11PM

S P E C I A L S

BESTYET FROZEN VEGETABLES CORN, PEAS, MX, GREEN BEANS 2/\$1.00 10 OZ BOX	TOMBSTONE SPECIAL ORDER PIZZA  \$3.99 12"	PEPSI & 7-UP DT PEPSI, PEPSI FREE, SF PEPSI FREE, MT DEW, DT MT DEW, DT 7-UP, A&W, DR. PEPPER  \$3.59 12 PACK	BESTYET POTATO CHIPS 89¢ 8 OZ BOX	7-UP DT. 7-UP, A&W, DR. PEPPER  \$1.19 2 LITER
---	--	---	---	--

MANUFACTURERS COUPON EXPIRES 11-8-92
THIS COUPON GOOD AT SPEEDY MARKET

SAVE \$1.00 WHEN YOU BUY ANY WEB-FITS PRODUCT Containing 22 or More Diapers.


CONSUMER: Limit one coupon per purchase. DEALER: We will reimburse you face value plus 8 cents handling for coupons forwarded to VMG, 801 S.E. Assembly, Vancouver, WA 98661, provided you can comply with the terms of VMG's coupon policy. Void where prohibited or restricted. Cash value 1/20 cent. LIMIT ONE PER CUSTOMER 81742 305230

MEAT

LEAN GROUND BEEF

\$1.69 LB

SPECIAL

"WEE FITS" DIAPERS \$5.99 BOY/GIRL MED/LARGE SEE COUPON ABOVE *ULTRA TRIM BOY/GIRL *WIDER ELASTIC WAIST *FORM-FITTING LEG GATHERS *REFASTENABLE TAPE *NO PERFUMES *LOWER PRICE	INTRODUCING FARMER BROTHERS WHOLE BEAN COFFEE GROUND AND BREWED FRESH DAILY MED. COFFEE ANY FRESH DONUT OR ROLL 69¢ PLUS TAX	BLUE BONNET MARGARINE  59¢ 1 LB QTRS
---	--	---

MEAT AND DELI

USDA CHOICE BONELESS BEEF CHUCK ROASTS..... **\$1.99 LB**

JENNIE - O WHITE / COMB. TURKEY ROASTS..... **\$2.99 2 LB ROAST**

SMOKED TURKEY BREAST..... **\$2.99 LB**



PRODUCE

BANANAS..... **39¢ LB**

RED OR RUSSET POTATOES..... **89¢ 5 LB BAG**

YELLOW ONIONS..... **59¢ 2 LB BAG**

ORDER YOUR FRESH HOLIDAY TURKEY TODAY!

645-7360

Prices good through Sunday November 8, 1992

We reserve the right to limit quantities

Vida opens Music in Park Family Series

Vida, a new trio of cello, harp and percussion, will give two performances of folk music on Sat., Nov. 21 at 9:30 and 10:30 a.m. at St. Anthony Park Library, 2245 Como Ave. The first in a series of family concerts sponsored by Music in the Park, these two performances will help kick off St. Anthony Park's "Holiday Lights" day—a day-long festival to bring the community together to celebrate the coming of winter and decorate the area with holiday lights.

The centerpiece of the program will be a musical illustration and reading by actress Litten of Jan Brett's folk tale, *The Mitten*. All children are urged to bring some sort of small percussion or noise-making instrument they find around the house, since the audience will be invited to join the performers on several selections.

Vida's cellist, Laura Sewell, and percussionist, Jay Johnson, are St. Anthony Park residents. Both have a wealth of world-wide recording and performing experience.

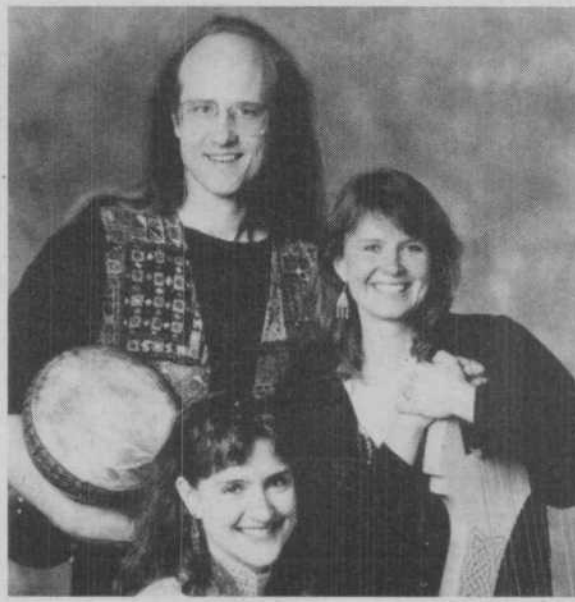
Sewell is a graduate of the Julliard School of Music and in 1988 was chosen as the *Self* magazine "Fresh Start" winner, a prize awarded nationally to women of outstanding initiative and spirit. Recently she was featured as solo cellist in the PBS movie, "A Marriage of Georgia O'Keeffe and Alfred Steiglitz."

Johnson is pursuing a masters degree in ethnomusicology at the University. He has performed

dozens of world premiers at new music festivals throughout the U.S. and Europe. A composer and conductor as well as a percussionist, Johnson has worked with the Children's Theatre Company, Guthrie Theatre, Chanhassen Dinner Theatre and others.

Vida's third member, harpist Sunita Staneslow of St. Paul, is one of the few harpists worldwide to perform professionally on both the concert pedal harp and traditional folk harp. She has performed with major orchestras such as the Israel Philharmonic and as principal harpist of the Jerusalem Symphony. Staneslow tours internationally and has appeared on radio and television in Spain, Israel and the U.S.

Tickets are \$5 for adults and \$3 for children or \$4 for adults and \$2 for children if purchased in advance. They may be purchased at The Bibelot Shop (646-5651) and Micawber's Bookstore (646-5506). For more information, call 644-4234.



Vida performers Laura Sewell, Jay Johnson and Sunita Staneslow will give two performances on Sat., Nov. 21, 9:30 and 10:30 a.m., at the St. Anthony Park Library. Sewell and Johnson are St. Anthony Park residents.

Music in the Park

Music in the Park Series presents violinist Jack Glatzer in his Twin Cities concert debut on Fri., Nov. 6, 8 p.m.

The Rosalyra String Quartet will perform Sun., Nov. 22, at 4 p.m. with Minnesota Orchestra principal clarinetist Burt Hara.

"Dinner in the Park" at St. Matthew's Episcopal Church will follow the Nov. 22 concert. All proceeds benefit community services. Reservations should be made by Nov. 17. Call 645-3058.

Tickets for both concerts, held at St. Anthony Park United Church of Christ, 2129 Commonwealth, are \$10 at the door, \$9 in advance at The Bibelot Shop and Micawber's Bookstore, and \$5 student rush. Call 644-4234.

Certified Public Accountants



Catherine Holtzclaw
CPA, MBT, CFP

Karen Palm
CPA, CMA, CFP

Dan Bane
CPA

INCOME TAX

Tax Planning and Preparation for:
Individuals
Corporations
Partnerships
Estates & Trusts

PERSONAL FINANCIAL PLANNING


BUSINESS SERVICES

Compilation of financial statements
Payroll Tax guidance
Planning for growth & contraction

Bane, Holtzclaw, Palm & Co.

Certified Public Accountants
Located at the corner of Como and Doswell
Call 644-1074

**We don't
teach
kids what
to think.
We teach
them how.**

Mounds Park kids don't just memorize facts; they learn to think for themselves. To find out more about a fully accredited college preparatory school (K-12) that cares about kids, call (612) 777-2555. **Mounds Park Academy** 
Open House: Thursday, December 3, 7-9 p.m.

UNICEF CARDS

WRAPPING PAPER

CALENDARS

**MICAWBER'S
BOOKSTORE
IN MILTON SQUARE**
2238 Carter Avenue
(612) 646-5506

Myth

French Food Is Expensive

REALITY

We offer a 3-course \$5 lunch daily, and our wines include French imports for less than \$10 a bottle! At the Quail, you can spend a lot or a little and still eat well.

Don't Myth Out!

Festival of Beaujolais Nouveau begins third week of November. Reserve your holiday party for up to 40 people.



291-1236 • 371 Selby Avenue
(across from WA Frost)

ST. ANTHONY PARK HEALTH CARE PROFESSIONALS

Bjorndahl & Dodds, Family Dentistry
2282 Como Avenue, 646-1123

St. Anthony Park Home, 2237 Commonwealth, 646-7486
A Minnesota Nursing Facility

Twin Cities Hearing Center, 1563 Como,
646-2519, "Call us for Sound Advice"

St. Anthony Park Clinic, 2315 Como, 646-2549
Dr. David Gilbertson

St. Anthony Park Block Nurse Program, 642-9052
Helping Older Neighbors Live at Home

Grossmann & Kirkegaard, Family Dentistry
2278 Como Ave., 644-3685

River City Mental Health Clinic
2265 Como Ave., 646-8985

**Como Chiropractic
Health Center**
1884 Como Ave., 645-8393

Raymond Gerst DDS
2301 Como, 644-2757

Miller Pharmacy
2309 Como Ave.,
646-3274, 646-8411



ALL SEASONS CLEANERS

**Full Service Professional Dry
Cleaners and Launderers**

**\$5.00 OFF EACH
ORDER of \$20.00**
(\$10 off \$40 order, etc.)

Includes Bedspreads, Comforters, Blankets, etc.
Dry cleaning orders only. 1 coupon/customer.
Present coupon with incoming order.
Not valid with other offers.
Expires November 31, 1992

20% OFF DRAPES

Present coupon with incoming order.
Not valid with other offers.
Expires November 31, 1992

**MILTON SQUARE
COMO AT CARTER**
644-8300

Mon.-Fri.: 7am - 6pm Sat. 9am - 5pm

School News

Central High School

On Wed., Oct. 14, Central beat Humboldt for Central's homecoming game. After the game

there was a dance. The game and dance finished off two weeks of homecoming activities. To start off those two weeks was spirit week, Oct. 5-9. During spirit week you could see hippies, pajamas, class colors, hats, ties, and people who looked like they walked off the beach in the halls and classes. The week following spirit week was homecoming week. During that week there was a breakfast at Embers, a coronation and a pep rally. Congratulations to Amanda Steven of St. Anthony

Park, who was Duchess for the sophomore class.

Student Council this year has a great turnout. People in Student Council from the neighborhood are Tim Kersey, Wendy Peterson, Todd Nakanishi, Nicole Nice-Peterson, Amy Tennison, Amanda Steven, Nunia Mafi, Brenna Barrett, Kerstin Beyer, Ben Westhoff, Cory Tennison and Vail Smerlinder. These students were voted on by their classmates to be on Student Council. These students will be divided into the following committees: coronation, homecoming dance and coronation balloting.

At Central we have some members of the Optimist Club. The Optimist Club consists of 15 young men and women. These representatives from Central are Jeffrey Rhodes and April Carter. Jeffrey and April will attend a youth appreciation on Nov. 15. A random drawing will take place with the winner receiving a \$1,000 scholarship.

Brenna Barrett

Como Park High School

On Oct. 19, several Como Park High School students participated in Youth Vote '92. The students had a chance to run for a citywide student chair position. Pauline Vo and Zoe Bloch were Como's nominees. While there, Como students, as well as those from other schools, had a chance to debate five resolutions and then vote on them. Resolutions were on a variety of topics such as education and health care. The students from all over the city ended up passing four of the five resolutions. After that was over, students had a chance to hear from representatives of each candidate running for president.

With October almost over and November coming up, Como students and staff are as busy as ever. On Nov. 4 and 12 from 5:30-8:30 p.m. parent/student/teacher conferences will be held. There is no need for an appointment and everyone is welcome and encouraged to come. Nov. 6 is an inservice day for secondary schools and students will only have a half day. Nov. 7 is the writing competency test for 11th and 12th graders.

On Nov. 9, a banquet/potluck will be held for all fall sports. It will be a time to congratulate the fine jobs the Como athletes have done this fall. Nov. 20 is the Sadie Hawkins dance where the girl asks the guy, but don't worry, a date isn't required! This will be held from 7:30-10:30 p.m.

Nov. 21 is the math competency test, again for 11th and 12th graders. Competency tests for 9th graders will be held later in the spring. On Nov. 24 there will be a parent/advisory council meeting at 7 p.m. in the library. The 25th is again a half day for students. On the 26th and 27th there will be no school because of the Thanksgiving holiday.

Como yearbooks are on sale now until the 25th. If you are looking for holiday gifts, yearbooks are perfect.

Congratulations to Como's debate team, which earned a first place trophy at the St. Croix Falls Wild River Debate Tournament. Varsity debaters for that meet were Zoe Bloch and Brian Zabel, whose record was 4-0. Watch for Jovan Petkovich and the JV team. We expect to hear more from him in the future.

Como Park's fall sports teams have been doing an excellent job. One team in particular, the boys' soccer team, has taken Como by surprise. They have finished as champions of the St. Paul conference, but their season is not yet over. It looks as though they may have a good chance at making it to State. Niles Deneen, Ben Dorer, Ban Jongewaard, Josh Jongewaard, Adam Seeley, Ahmed Thabet, Tuan Tran, Chad Trost, Jeremy Woodford, Kelly Wynn, and Khaau Suk Yang are team members from the Bugle area. They all helped in making the soccer team a success.

Beginning Thurs., Nov. 12, at 7 a.m., there will be coffee hour with the principal for parents and all who wish to come. This will continue to take place the second Thursday of each month.

Naomi Davis

PARK Bugle

Writers needed

The *Park Bugle* is looking for writers interested in covering neighborhood issues.

Call Winton at 646-5369.

Christy -

We're glad you want to write, but we lost your number! Please call again!

-ed.

**AVOID
BALLOON
PAYMENTS.**

Don't let your energy bills get blown out of proportion. Sign up for NSP's Budget Helper plan and make those monthly payments predictable.

Just follow the simple instructions that accompany your NSP bill, and those big payments won't pop up again.

NSP
Budget Helper

The St. Paul Port Authority

Congratulates

Marshall Partners

On its successful repositioning of

BANDANA



SQUARE

and the signing of five new tenants

Welcome

Aspen Medical Group
Bandana Banquet Centre
Chattanooga Music Café
Futons, Etc.
Heart N' Home



ST. PAUL PORT AUTHORITY

Community Calendar

OCTOBER

30 Fri.

Halloween party, Langford Park, 4 p.m.

Youth Activity Night for 7-12th graders, St. Anthony Park United Methodist Church, 2200 Hillside, 7-10:45 p.m. Every Fri.

NOVEMBER

1 Sun.

We Care, St. Anthony Park United Church of Christ, 2129 Commonwealth Ave., 8 p.m. Call 641-1664. Every Sun.

2 Mon.

Women for Sobriety, St. Anthony Park Library, 5:30 p.m. Call 224-0328. Every Mon.

Boy Scout Troop 17, St. Anthony Park United Church of Christ, 2129 Commonwealth Ave., 7 p.m. Every Mon.

Brimhall Elementary School PTA, 7 p.m.

Falcon Heights Elementary School PTA, 7 p.m.

South St. Anthony Booster Club, South St. Anthony Rec Center, 890 Cromwell, 7 p.m.

St. Anthony Park Elementary School Parking Lot Task Force, 890 Cromwell, 7 p.m.

AA, St. Anthony Park Lutheran Church, 8 p.m. Call 647-9446 or 770-2646. Every Mon.

3 Tues.

Election day, 7 a.m.-8 p.m.

Toastmasters, Hewlett Packard, 2025 W. Larpenteur, 7:30 a.m. Call Jon Hunstock, 641-9708. Every Tues.

Family gym night, South St. Anthony Rec Center, 890 Cromwell, 6:30-8 p.m. Every Tues.

St. Anthony Park Association Board, Langford Park Rec Center, 7 p.m.

4 Wed.

St. Anthony Park Merchants & Professionals Association general membership meeting, Muffuletta, 8 a.m.

Leisure Center, St. Anthony Park United Methodist Church, 10 a.m. Storytelling. Holland Floriade by Homer Rector.

Parent-child play group, So. St. Anthony Recreation Center, 890 Cromwell, 10 a.m.-noon. Every Wed. Call 646-6986.

Bookmobile at Hamline & Hoyt, 12:30-5:30 p.m. Also Wed., Nov. 18.

Vietnam Veterans of America, St. Paul Chapter 320, HHH Job Corps auditorium, Arlington & Snelling, 7:30 p.m.

5 Thurs.

St. Anthony Park Community Council Physical Planning Committee, 890 Cromwell, 5 p.m.

St. Anthony Park Community Council Human Services Committee, 890 Cromwell, 7 p.m.

6 Fri.

No school, Roseville Area Schools & St. Paul Public Elementary Schools. Secondary school students in St. Paul have one-half day.

Falcon Heights/Lauderdale recycling day.

Bookmobile at Seal Hi-Rise, 9:30-10:30 p.m. Also Fri., Oct. 20.

International Coffee House, Lutheran Campus Ministry, 1407 N. Cleveland, 7:30 p.m.

9 Mon.

Como Park recycling day.

Falconeers Senior Club, Falcon Heights City Hall, 1-3:30 p.m.

10 Tues.

Lauderdale Friends & Neighbors, City Hall, 1-4 p.m.

St. Anthony Park Association, St. Anthony Park United Church of Christ, 2129 Commonwealth Ave., 5:45 p.m. social hour; 6:30 p.m. dinner; 7:30 p.m. program.

Lauderdale City Council, City Hall, 1891 Walnut, 7:30 p.m.

11 Wed.

St. Anthony Park recycling day.

Leisure Center, St. Anthony Park United Methodist Church, 10 a.m. Birthdays; South Sea Islands by Hazel Stoeckeler.

Falcon Heights City Council, City Hall, 2077 W. Larpenteur, 7 p.m.

St. Anthony Park Community Council, 890 Cromwell, 7 p.m.

12 Thurs.

Bazaar, St. Anthony Park United Church of Christ, 2129 Commonwealth Ave., 10 a.m.-2:30 p.m. Lunch: 11:30 a.m.-1:30 p.m.

Meeting on plans for Hwy. 280, St. Anthony Park United Methodist Church, 2200 Hillside, 7 p.m.

14 Sat.

Minnesota Mineral Club, Falcon Heights City Hall, 7:30 p.m.

16 Mon.

St. Anthony Park Community Education Advisory Council, St. Anthony Park Elementary School, 7 p.m.

17 Tues.

District 10 Community Council, Lyngblomsten Senior Center, Midway Pkwy. & Pascal, 7 p.m.

18 Wed.

Leisure Center, St. Anthony Park United Methodist Church, 10 a.m. Thanksgiving celebration.

Block Nurse Program, Inc. board of directors, Park Bank, 2265 Como, 4-6 p.m. Call 339-7774.

St. Anthony Park Community Council Housing Committee, 890 Cromwell, 5 p.m.

St. Anthony Park Community Council Environment Committee, 890 Cromwell, 7 p.m.

Langford Booster Club, Langford Park, 7:30 p.m.

19 Thurs.

Thanksgiving luncheon for senior citizens, Murray Junior High, 2200 Buford, noon. Call 293-8738 for reservations.

20 Fri.

Falcon Heights/Lauderdale recycling day.

21 Sat.

Fare SHARE distribution and registration for Dec., St. Anthony Park Lutheran Church, 8-10:30 a.m., call 644-6804; Seal Hi Rise, 10 a.m.; Holy Childhood Church, 10 a.m.-noon.

"Holiday Lights" day and St. Anthony Park Merchants and Professionals Association dinner and silent auction at Mama D's, 6:30 p.m. Call 645-2366.

Contradancing, Oddfellows Hall, 2380 Hampden, 8 p.m. Call 642-9118.

23 Mon.

Como Park recycling day.

Falconeers Senior Club, Falcon Heights City Hall, 1-3:30 p.m.

St. Anthony Park Block Nurse Program Board of Directors, St. Anthony Park Library, 7:30-9:30 p.m.

25 Wed.

St. Anthony Park recycling day.

No school, St. Paul Public elementary schools. No afternoon classes, St. Paul Public secondary schools.

Falcon Heights City Council, City Hall, 7 p.m.

Thanksgiving Eve ecumenical service, St. Anthony Park United Church of Christ, 2129 Commonwealth Ave., 7:30 p.m.

26 Thurs.

No school, St. Paul Public & Roseville Area Schools. Teachers' convention. Also Fri., Nov. 27. Thanksgiving.

30 Mon.

Cub Scout Pack 22, St. Anthony Park United Methodist Church, Como at Hillside, 7 p.m.

St. Anthony Park Elementary School Parking Lot Task Force, 890 Cromwell, 7 p.m.

St. Paul City Council neighborhood budget meeting, Como golf clubhouse, 1431 Lexington Pkwy., 7-9 p.m.

Items for Community Calendar may be submitted to Kathy Malchow, 646-1288, or Bugle office by 6 p.m. Mon., November 16.

Burton's Rain Gutter Service



• Patch • Repair • Install

• Rainleader Disconnects • Chimney Caps

Licensed • Bonded • Insured

Serving area since 1973

Burton R. Johnson

699-8900

CATS LIMITED CLINIC

Dedicated to quality health care for cats—medicine, surgery, dentistry, preventive care; in a cats-only environment.

Science Diet Available

Dr. Sharon Kleckner

2042 St. Clair Ave. St. Paul 699-1413



GOPHER LANDSCAPE

• Snow Removal •

RESIDENTIAL SNOW BLOWING
COMMERCIAL SNOW PLOWING
RESIDENTIAL AND COMMERCIAL SANDING

Residential properties are cleared with walk-behind blowers to avoid damage to sidewalks, sod & shrubs often caused by plows or loaders.

Special Discounts Available including early sign up special

Call for a brochure or estimate

11345 Highway 7 • Minnetonka, Minnesota 55305 • Phone: (612) 642-1941

Obituaries

Kenneth Boss

Kenneth A. Boss, the last surviving son of a pioneering St. Anthony Park family, died on September 15, 1992. He was 88.

Boss was the former president of Mutual Dealer's Wholesale Company. His father, Andrew, was a professor in Animal Husbandry at the University. In 1902, he built a home on the northwest corner of Buford and Raymond, while his brother, William, of the Agricultural Engineering department, built across the street. The two homes were among the first in St. Anthony Park to get electricity.

Boss had lived in recent years at the Presbyterian Homes in Arden Hills.

Kenneth Boss is survived by his wife, Margaret; his daughter, Betty Krantz of Red Wing; his son, Andrew of Oklahoma City; three grandchildren; and five great-grandchildren. His nephew, Andrew Boss, is the president of St. Anthony Park Bank.

Lilith Grant

Lilith Kennedy Grant died on October 4, 1992, at the age of 63 years. She was a longtime resident of St. Anthony Park.

Grant is survived by her children, Margaret Evenson of Northfield, Alison Grant of Cleveland, Ohio, Elizabeth Grant and Nicholas Grant, both of St. Paul; her mother, Marian Poutsma of St. Petersburg, Florida; and her former husband, Richard Grant of Morris, Minn.

Arthur Helland

Arthur J. Helland, a South St. Anthony Park booster, died on Aug. 4, 1992, at age 83. He was a retired bank executive.

Helland was born and raised in a house on Territorial Road and lived there until 1935. He lived in St. Paul for the past few years, but spent his 45-year career in Minneapolis.

Helland maintained an interest in St. Anthony Park history and wrote several articles for the *Bugle* in the 1980s, including a feature on the origin of neighborhood street names.

Helland helped organize and was a member of the South St. Anthony Park Booster Club.

He is survived by his wife Louise and two sons, Stephen and Robert, all of St. Paul.

Norbert Hermes

Norbert Leo (Butch) Hermes, a lifelong resident of Falcon Heights, died at age 87 on Oct. 2, 1992. He was the proprietor of N. L. Hermes Flowers and Gifts and a member of the 4th Degree Knights of Columbus.

Hermes was born in Rose Township in what is now Falcon Heights. He and three of his brothers went into the greenhouse business, dealing in vegetable plants and, later, flowers.

In 1945 Hermes left the family business and purchased the shop on the northwest corner of Snelling and Larpenteur, where he opened N.L. Hermes Flowers and Gifts. He also developed a shopping center which included a post office. He served on the board of the Falcon Heights Businessmen's Association and the board of the St. Paul and Minneapolis Greater Floral Assn.

Survivors include his wife, Verna of Falcon Heights; his sons, Rev. Roger of Hampton and Ralph of Monticello; his daughter, Jean Klosterman of Minneapolis; eight grandchildren; twelve great-grandchildren; sisters, Alvina Neid, Bernadine Smith, Melita Rosenthal, Gertrude Aschman, Marie Edson, Mildred Moder; brothers Walter and Victor; and stepsister Sister Hubert Marie, C.S.J.

Shirley Holleran

Shirley Ann Holleran died suddenly on October 24, 1992, at age 60. She was a resident of the Como Park area.

Holleran was a member of Holy Childhood Catholic Church.

She is survived by her husband, Thomas; her daughters, Kathleen Schueller, Mary Pfundstein, Sheila Holleran, and Theresa Holleran, all of St. Paul; her sons, Thomas and Michael, both of Lino Lakes; 13 grandchildren; her mother, Edna Fink of St. Paul; and her sister, Pauline Witkowski of Minneapolis.

Elsie Johnson

Elsie I. Johnson, a longtime St. Anthony Park resident, died on September 20, 1992. She was 90.

Johnson worked for many years at Mrs. Strandy's Bakery on Como Avenue, located where The Bibelot Shop is now. She was a member of St. Anthony Park Lutheran Church.

Survivors include her daughter, Jean L. Larson; grandsons, David and Keith Larson; five great-grandchildren; a sister, Mayfie Chew; and a brother, Victor Madsen.

M. W. Knoblauch

M. W. Knoblauch, a longtime community leader in St. Anthony Park, died at 95 at October 7, 1992. He had lived in St. Anthony Park for over 50 years.

"Knobby" Knoblauch was born in Henderson, Minn., and grew up in Excelsior. In 1923, he joined a stationery firm in Minneapolis and started its school-supply department. The firm became known as Farnham Stationery and School Supply Company. In 1939, he was instrumental in founding Corpus Christi Catholic Church.

Knoblauch was a lifelong member of St. Anthony Park American Legion Post 34. He and his wife, Justine, who died in 1967, started Boys' and Girls' State. He was a past president of the St. Anthony Park Association.

In addition to his wife, he was also preceded in death by two grandsons, Daniel and Michael Knoblauch. He is survived by sons Harry of St. Anthony Park and

Joseph of Hopkins; a daughter, Kathryn Felton of Erie, Pa.; 24 grandchildren; 10 great-grandchildren; a sister, Marguerite Knoblauch of Excelsior; and a brother, Charles of International Falls.

Mary Tabery

Mary R. Tabery died on September 17, 1992, at age 83. She had been a resident of St. Anthony Park for over 40 yrs.

Tabery was an active member of Corpus Christi Catholic Church and in the St. Anthony Park Leisure Center.

She was preceded in death by her husband, Fred (Pete). She is survived by three brothers, Edward Larson of Worthington, Robert Larson of Cold Springs, and Andrew Larson of Wilmont; one sister, Clara Herrig; and many nieces and nephews.

Pauline Teeter

Pauline H. Teeter, a resident of St. Anthony Park on Commonwealth Avenue, died on September 24, 1992. She was 86.

Teeter was a retired schoolteacher and a member of St. Anthony Park United Methodist Church and the Order of Eastern Star.

Preceded in death by her husband, Thomas, she is survived by sons, Robert, Philip, and William; a daughter, Polly Forse; 13 grandchildren; 14 great-grandchildren; and a sister, Pearl McKeogh.

Marion Weeks

Marion M. Weeks died on October 8, 1992. She was 74. A resident of Como Park on California Drive, she had been employed by the Burlington Northern Railroad for 40 years.

Weeks was a member of Como Park Lutheran Church and a volunteer at St. Joseph Hospital.

She was preceded in death by her parents, George and Hazel. Survivors include four nephews in northern Illinois.

Helene Zerrien

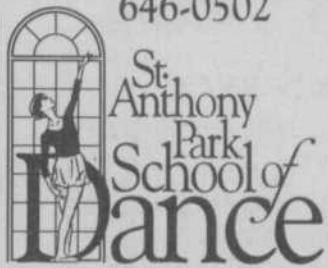
Helene A. Zerrien died at age 73 on October 13, 1992. She had lived in the Como Park neighborhood. She was a member of Como Park Lutheran Church.

Mrs. Zerrien is survived by her husband, Herb; her son, Donald of Waukegan, Ill.; four sisters and two brothers.

—Compiled by Ann Bulger

Quality Education In A Wholesome Environment Since 1982

Age 2 - Adult
Just off Hwy. 280 at
Raymond Avenue
& Energy Park Dr.
Call for information.
646-0502



Mon-Fri

OMEGA

646-8855

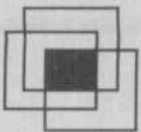
TRAVEL

Como at Doswell

New extended hours:

Mon, Tues, Wed, Thur 8:30 - 6:00

Friday 8:30 - 5:00



The St. Anthony Park Block Nurse Program
NEED A BLOCK NURSE?

Health care...Personal care...Homemaking
The help you need to remain at home...

Call 642-9052 and ASK FOR A BLOCK NURSE

For persons 65+ who reside in St. Anthony Park,
1666 Coffman, University Grove, and
1500 block of Fulham

Clean The Air You Breathe

With A 3M Filtrete™ Clean Air Filter

- 20 times more efficient than ordinary filters.
- Removes 92% of airborne dust, pollen and mold.
- 3 months of clean air performance (under normal conditions).

SIZES AVAILABLE	16 x 20 x 1	20 x 20 x 1
	16 x 25 x 1	20 x 25 x 1



12.99
PER FILTER

PARK HARDWARE HANK

Your "first and only stop" store
2290 Como Avenue 644-1695
Monday-Friday 8:30-7:30; Saturday 8:30-5
Sunday 11:30-4:30

7 DAYS 'TIL GOOD GOVERNMENT

Issue: Political Reform

Pat Igo: Term limits are necessary to "take our government back from career politicians." Pat Igo is a successful area businessman, and firmly believes in the principal that our politicians should be citizens first.

John Marty: Voted against allowing term limits from being debated in the Senate, and even voted against allowing term limits from appearing on the General Ballot.

Pat Igo for State Senate

Paid for by The Igo for Senate Committee, Michael L. Tracy, Treasurer, 1781 Skillman Ave. 55113

Classified deadline:
November 16, 6 p.m.
Next issue: November 27

- Type your ad.
- Count the words. A word is numbers or letters with a space on each side. A phone number is 1 word.
- Figure your cost: 30¢ x number of words.
- Send your ad & check to *Bugle Classifieds* P.O. Box 8126 St. Paul, MN 55108 or deliver to the drop box at the rear of the *Bugle* office at 2301 Como Ave. by 6 p.m. on deadline day.
- Call Kathy Magnuson, 645-2475 or the *Bugle* office, 646-5369, with questions.

Wanted

TOP CASH PAID. Older Furniture (All Types)—Also Rugs—Pictures—Frames—Clocks—Toys—Lamps—Glassware—Bronzes—Indian Items—Crocks—Stained Glass Windows—Mirrors—Quilts—Dolls—Neon Signs—Duck Decoys—Fishing Items—“ANYTHING OLD.” Call 227-2469 Anytime!!!!

WANTED: OLD TOYS—cast iron, die cast, tin. 644-1866.

GARAGE TO RENT. If you have a garage to rent, please call us. 646-8409.

Instruction

VIOLIN INSTRUCTION offered by Park resident. Experienced teacher and performer. Eager to work with young children, though all ages welcome. Bobbi Smith, 646-0877.

SINGING YOUR BEST? Performance Associates Unlimited offers training in vocal development, musicianship and performance poise. Lessons available for all ages, ability levels, musical styles. 487-0362.

PIANO, ORGAN, GUITAR LESSONS, 20 years' experience, music degree, St. Anthony UMC, 425-1210.

For Sale

MINNESOTA WOMEN'S PRESS BOOKSHOP: Call for information about book groups. Feminist books, shirts, cards. 771 Raymond near University. 646-3968.

OAK TABLE and matching buffet, 6 chairs in very good condition. \$750 or best offer. 645-1383 after 5 p.m.

SALE: SEAL HI RISE, 825 Seal St., Nov. 21, noon–5 p.m. Lunch, crafts, white elephant, rummage, bake sale.

ABSOLUTELY GORGEOUS 6' x 4' handwoven Kashmir silk carpets for sale. A must see. Call 642-1138.

FIREWOOD FOR SALE. 642-1340.

Freebies

NO CHARGE FOR AN AD TO GIVE AWAY AN ITEM.

Eight non-working spring-operated alarm clocks. 644-4740, Joane.

Housing

FOR RENT: EUSTIS APTS: One and two bedroom. From \$410–\$495. 1355–1365 Eustis. Donna, 486-9653.

FOR RENT: One bedroom apartment, garage, 1261 N. Cleveland. 646-8572.

ROOM FOR RENT: Across from the St. Paul Campus. \$210/mo. including utilities. 645-6896 after 5 p.m.

HOME FOR SALE. 2-bedroom, well-maintained, beautiful deck and yard, near golf course. 1964 Malvern St., Lauderdale, 633-9454. \$68,500.

FOR RENT: Beautiful, two-story, furnished, four bedroom St.A.P. home available for rent from March 1–Nov. 30, 1993. Garage. Finished family room. Perfect for family on sabbatical or relocating to this area. 649-1710.

FOR RENT: Very large sleeping room for female in historic St.A.P. home. Walk to U of M. No pets, no smoking. 645-2475.

FOR SALE: N. St. Anthony Park. Move-in condition! Updated interior with 4+ BRs. 2150 Knapp St. \$147,900. Call Peggy Sparr, 639-6383.

FOR SALE: N. St. Anthony Park. Immaculate home, fenced yard, large screened porch. One-level living. 1276 Eustis. \$81,900. Peggy Sparr, 639-6383.

FOR SALE: S. St. Anthony Park with breathtaking views of Mpls. skyline and near U of M. Contemporary decor and 3-BR townhome. 894 Hunt Place. \$82,900. Peggy Sparr, 639-6383.

FOR SALE: Newell Park near U of M, Como Park and Fairgrounds. Maintenance-free siding, front porch and 2-BR. 1895 Chelton, \$47,900. Peggy Sparr, 639-6383.

FOR SALE: Excellent investment potential for owner-occupant or wonderful single-family home near Lake Como and Hamline University. Updated decor with 2 BRs up and 2 BRs down. 993 Churchill. \$71,900. Peggy Sparr, 639-6383.

FOR RENT: Upper duplex. 2 bedrooms; clean, quiet, convenient location in St.A.P.; adults; \$550 + utilities; available; call 645-7359.

READY TO MOVE UP TO A LARGER HOME? Or down to something smaller and easier to maintain? Now is the time to put your home on the market! Interest rates are at record lows and November is a good time to sell. Check our lower rate plans by calling Bill Smith at Smith Realty, 379-2317.

FOR SALE: N. St. Anthony Park 4-plex by owner. Excellent condition. quality tenants. Returns 1% on investment. 647-9104 or 646-5390.

Home Services

HOME REPAIR. Expert carpentry, remodeling, additions, door and window replacement. Tom Oberg. 698-3156.

SASH CORDS replaced. 698-3156. Tom Oberg.

OVERWORKED HOUSEHOLDS... Consider a house-keeping service. References. 623-9985. Gloria.

JOE'S CONCRETE WORK, 644-2343.

ARTISTS AT WORK: a unique company in the service of housecleaning. Weekly, bi-weekly or occasional. 646-2611 M–F, 9–6.

LARRY'S PAINTING. Exterior, interior, spray ceilings, texture ceilings, drywall, paper hanging. Free estimates. 222-4227.

PAINTING PLUS. Interior, exterior painting and staining. Specializing in spray textured ceilings. Free estimates. 646-8230.

WE SATISFY ALL YOUR PAINTING NEEDS. Professional painting, interior, exterior, paperhanging, patching, taping, staining, ceiling spray texturing. Water damage repair, and more. Family business in the Park—40 years. Jim Larson, 644-5188.

BURTON'S RAIN GUTTER SERVICE. Clean, patch, repair, install, rainleader disconnects, chimney caps. Licensed, bonded, insured. 18 years' experience. 699-8900.

GENERAL CONTRACTOR with old house experience. Repairs, replacements, additions of windows, doors, decks, roofs, etc. Kitchens, baths and family rooms. Local neighborhood references are available. Call Terry 771-1268.

HANDYMAN will do all the little jobs that no one else wants. 642-9985.

REMODELING, ALL TYPES: carpentry and home repairs, kitchen and old house specialist. References. Call Mark for estimates. 488-6625.

HILLIARD E. SMITH general contractor. Carpentry work, block, stone, cement work. Interior, exterior remodeling, insulation. 46 years in the Park. “Small jobs are our specialty.” Licensed, bonded, insured. 644-0715.

WALLPAPER HANGING, painting and preparation. D.J. Bellandi. 483-0419.

PRUNING. Shrubs, hedges and small trees expertly pruned. 30 years' experience. Call Swiss Gardens at 642-9985.

GUTTERS CLEANED. Bob Finn. 488-2761.

MAID IN HEAVEN. Immaculate cleaning without sky-high rates. Owner/operated. Call Leslie 729-7552.

PARK Bugle

Writers needed

The *Park Bugle* is looking for writers interested in covering neighborhood issues.

Call Winton at 646-5369.

HOUSEHOLD HELP. A reliable cleaning service with excellent neighborhood references. 789-0089.

CLEANING HELP NEEDED? Housekeeping service for overworked households. References. 623-9985. Gloria.

DEPRESSED BY HOUSE MESS? Cure it with Ms. Clean. 7 years exp. 224-1726.

TREE AND HEDGE TRIMMING AND REMOVAL. Stump removal. Roger's Tree Service. Lic. & Ins. 699-7022.

HOUSECLEANING, Rita, 776-9534.

Notices

AA: St. Anthony Park group meets every Monday 8 p.m. StAP Lutheran Church. Call 770-2646 or 647-9446.

IMPROVE YOUR SPEAKING SKILLS. Midway Midday Toastmasters Club is offering a one-day workshop on speaking and speechmaking at Twin City Testing in St. Paul on Nov. 7. Cost is \$18. For information regarding the workshop or about Toastmasters call Sharon Ness at 645-6528.

WE BUY MORTGAGES AND CDs. 15% referral fee paid. Call J.D. Funding. (612) 647-0858.

Professional Services

INSTANT PASSPORT PHOTOS—\$7.50. International Institute, 1694 Como Ave. Hours Mon.–Fri., 9 a.m.–4:30 p.m.

MARK LABINE, ATTORNEY AT LAW, business, real estate, probate, family law, DWI, bankruptcy and personal injury. Please call for free consultation. 644-1739.

YOU HAVE A WILL, SO YOUR FAMILY'S FUTURE IS SECURE. OR IS IT? Taking care of the ones you love isn't as simple as it seems. To be sure your wishes are carried out, you need the help of someone who really knows estate planning. Ahlgren & Ahlgren. Attorneys at Law. 646-3325.

HARPIST. Cathy Salovich Victorsen. Beautiful music for any occasion. 644-7016.

Rain Gutters Cleaned & Repaired

Serving the Midway Area for 10 Years

LA Services
699-3373
References given



Chimney Sweep & Repair

LONDONAIRE SERVICES
No Fuss - No Mess Service
Member Nat'l Chimney Sweep Guild
Serving Midway Area for over 10 years.

SWISS GARDENS. An old-world approach to the art of distinctive landscape design. Call Philippe at 642-9985 for a free consultation.

PIANO TUNING AND REPAIR. MacPhail certified. Call Dorothy Tostengard, 631-2991.

CYNTHIA MEYER, Ph.D., LICENSED CONSULTING PSYCHOLOGIST. Areas of specialization include sexual abuse recovery, intimacy and relationship issues, grief/loss, sexuality, self-esteem, and early childhood parent loss. Individual, couple, and incest group therapy available. M.A. and insurance accepted. 645-9699.

WILL SERVE AS ADULT COMPANION for elderly St.A.P. resident. Retired medical technologist. Dolores, 644-4139.

Child Care

I NEED DAYCARE in my West Como home for infant. Full-time pay for probable part-time hours. Denise, 641-1621.

LICENSED CHILD CARE, food program, fenced yard, ages 2 to 5. Sandy, 659-9105.

EXPERIENCED CHILD CARE WANTED for infant in my home, part-time days. Falcon Heights location. 645-4054.

NEED DAYCARE for infant in Como area. Days. Call for details. 659-9324.

Help Wanted

PT, TEMP CLERICAL JOB. (2 months with potential for permanent PT) 20 hours/wk, flex schedule. Data entry and word processing skills required. Resume and/or letter of application by Nov. 5 to S. Landberg, Children's Home Society of Minnesota, 1605 Eustis St., St. Paul, MN 55108. EOE

WE SHIP GIFTS

IF YOU WISH - WE'LL PACKAGE THEM TOO!

- No long lines
- Full insurance
- Next day or second day service available
- Packaging supplies also available
- Anything from 1 to 1,000 pounds
- Nothing to awkward
- Pre-packed boxes

UPS Authorized SHIPPING OUTLET
We ship furniture too.



Packaging Store.
The shipper who does the packing too.

1658 Snelling Ave.
at Larpenteur • 644-2858
next to Pizza Hut
Holiday Hours Dec. 1-Dec. 23
9-8 M-F • 9-6 Sat • 12-5 Sun.



Bugle Neighborhoods

Smith to receive service award

Lois Ann Smith will receive a Northwest Youth & Family Services' 1992 Outstanding Service to Youth award on Nov. 5. She is one of eight recipients of this annual honor given by the social service agency.

Smith has acted as counselor, dean and assistant principal in the Roseville School District, serving as dean at Parkview Middle School and assistant principal at Fairview. She began her career as a guidance counselor at Macalester College and later at Capitol View Middle School. She has worked many

years with youth both in the college and middle school level, leading groups and personally counseling students and parents. Smith is currently a member of the Ambassador Club of Northwest Youth and Family Services, which promotes the agency and services to the public. She also acts as a mentor for a disaffected teenager by providing guidance and support.

The awards will be presented at the organization's annual Community Social at Shoreview Community Center, 4580 North Victoria, at 7 p.m. The evening (5:30-8:30 p.m.) will feature hors d'oeuvres, a raffle and door prizes. The public is invited to attend; tickets are \$13 and can be reserved by calling 636-5448. Proceeds support the work of Northwest Youth & Family Services.

Rock and Mineral Club meets

The Minnesota Mineral Club, the state's largest organization for rockhounds, meets monthly from October through May at Falcon Heights Community Center/City Hall, 2077 W. Larpenteur. Meetings are held the second Saturday of every month, starting with a business meeting at 7:30 p.m., followed by a program and refreshments.

Minnesota Mineral Club members, who include rock, gem and mineral buffs of all ages, also sponsor field trips during the summer months, as well as an annual show and rock swap.

For more information about attending a meeting or membership information, call Dennis Westman, 757-2066.

Speaking Briefly

Roseville school bond passes

Roseville voters passed a \$48 million school bond referendum at September's primary election—the largest school bond issue in the district's history.

The funds will be used to remodel and/or expand several schools. Tops on the list is Roseville Area High School, where construction will begin next summer to expand the facility to accommodate ninth graders.

Bonds will be sold and improvements to the high school and

other Roseville schools will be made over a five-year period, to minimize the effect on property taxes. Taxes will not increase until 1995, and the full increase—amounting to \$44 per year over current taxes for a home valued at \$104,000—will not take effect until 1996.

Holiday giving

Merriam Park Community Center has been preparing for the holiday season for several months. Foodshelf use dramatically increases during November and December. Cash, food and volunteer time are greatly in need and appreciated. Holiday foods such as turkey, ham, corn, potatoes, pies, rolls, stuffing, cookie mix or candies are useful contributions to those in need. The foodshelf has more than enough pumpkin and cranberries on hand.

Volunteer time is another valuable gift—call Jeanne at 645-0349. If you would like to make a foodshelf appointment, call Roberta at 645-0349. Hours are M-F 1-4 p.m., with some evening slots available with an appointment. Registration for Holiday Bureau toys and food will be done through a centralized phone number this year.

Call 484-6224 between Nov. 1 and Dec. 18 to register. All adults in a household will need to provide their social security numbers at the time of registration.

New bus route to link St. Anthony Park & Energy Park

Starting Nov. 7, the Metropolitan Transit commission (MTC) will move the 4U route to better serve businesses on Energy Park Drive. The route will serve Energy Park west of Snelling Ave.

This expanded bus service is the result of a public-private partnership between MTC and the St. Anthony Park Community Council, with support from the Midway Chamber of Commerce and Councilmember Paula Maccabee.

Energy Park will have 30-minute service from 6:30 a.m.-10 p.m. weekdays and 9 a.m.-6 p.m. Saturdays.

Customers who now catch the 4U on Como Ave can use Route 5 or walk a couple of blocks to catch the 4U. The 4U picks up on Snelling and Raymond Avenues.

25% Off Poster Framing

Get custom framing without getting hung up on the cost.

Our custom poster framing includes your choice from our complete selection of metal frames, plus mounting and glass.

This coupon and full payment are required at the time you order, and no other discounts apply. Offer good during November, 1992.

Hours: Tuesday-Friday, 10:00-5:30; Saturday 10:00-4:00. Closed Sunday and Monday. 2278 Como Avenue, next to The Bibelot. 645-7862



ST. ANTHONY PARK COMMUNITY COUNCIL

NEWS

Office: 890 Cromwell, St. Paul, MN 55114

292-7884

Community Organizer: Bobbi Megard

Members: Richard Almer, Connie Birk, Melissa Coffey, Phillip Duff, Dirk Duncker, John Grantham, Sandra Jacobs, Mark Labine, Dave McElroy, Alice Magnuson, Scott Magnuson, David Manning, Jan Meyer, Barbara Murdock, Richard Nelson, Howard Ostrem, Beth Richardson, Warner Shippee, Teddy Trejo, Ellen Watters and Gary Woodford.

Recycling efforts continue

Recycling in St. Anthony Park is highly successful. Approximately 70% of the households participate in our twice-monthly curbside pickups. The tonnage for July was 40.06 tons; August, 51.11 tons; and September, 42.82 tons. Plastics pickups at 928 Raymond Ave. is proving very popular and the tonnage is showing an increase since the program was begun this summer. September figures for all sites stood at 5.12 tons.

The neighborhood cleanup held September 19 collected 15.60 tons of refuse; 24 tons of demolition debris; 48 appliances; 23 TVs and air conditioners; 131 tires; 10 tons of clean fill; 9.86 tons of scrap metals. Our curbside recycling and sorting at the site diverted 62.68 tons of materials from landfills.

The Community Council will again sponsor a Christmas tree pickup in January to recycle tree waste. Watch the NETWORKER for more details.

Council-sponsored meetings are listed each month in the Bugle Community Calendar on page 17. Everyone is welcome!

Council votes to support excess levy referendum for St. Paul Schools

In October the council:

- Sent a letter to the Board of Education supporting the upcoming school levy referendum.
- Began planning and volunteer recruitment for two Neighborhood Anti-Violence Forums to be held in February and March next year.
- Approved the concept of a Dart Transit plan to provide some parking for their building at 1047 Raymond Ave., as long as Gateway Park is not negatively impacted.
- Accepted a site plan for a temporary 452-space parking lot on University Ave. to serve Court International with maximum landscaping along University and Eustis and access from Territorial Road rather than Eustis to be considered.
- Recommended that the Franklin/University Small Area Plan boundaries be amended to include the area south of Territorial Road in Westgate to address the parking problems of Court International and adjacent businesses.
- Voted to oppose future development of any drive-through fast food business on the front lots of the Midway Shopping Center.
- Approved a change in non-conforming use permit at 1441 N. Cleveland Ave. to allow use as a coffee shop.

SAP Elementary School Parking Lot Task Force update

At a recent meeting of the Elementary School Parking Lot Task Force, it was decided to have more meetings to review additional information regarding the proposed lots. The Town Meeting scheduled for November 11 to discuss recommendations was rescheduled for January 13 at the library.

Two additional meetings of the task force have been set for Mon., Nov. 2 and Mon., Nov. 30, at which time recommendations will be voted on and forwarded to the Community Council for consideration.

Representatives of the schools, parks, public works, teachers and residents have been at work since July addressing concerns about parking, bus loading safety, lighting, sidewalks, handicap access, and drop-off location at the elementary school.

Task Force meetings in November will be held at the South St. Anthony Park Rec. Center at 7 p.m. For more information call the Council office, 292-7884.

Other council meetings in November:

Thurs., Nov. 5: Physical Planning Committee, 5 p.m.; Human Services Committee, 7 p.m.

Wed., Nov. 11: Community Council, 7 p.m.

Wed., Nov. 18: Housing Committee, 5 p.m.; Environment Committee, 7 p.m.

All meetings will be held at South St. Anthony Park Recreation Center, 890 Cromwell Ave.