



Vol. I, No. 11

8,000 Published

May, 1975

The Park

BUGLE



Huck Finn points Tom in the right direction as St. Anthony Park Elementary students prepare a musical adaptation of Mark Twain's *Tom Sawyer*. Pictured from left to right are Huck Finn, played by Kirk Livingston; Tom Sawyer, played by Mark Kelsey, and Joe Harper, played by David Johnson.

Huck's Hannibal, Mo. Scene of School Play

The St. Anthony Park Elementary Chorus invites you to join them as they travel back to the town of Hannibal, Missouri to spend an evening with Tom Sawyer, Huck Finn, Aunt Polly, Becky Thatcher, and all the other folks in a musical adaptation of Mark Twain's adventures of *Tom Sawyer*.

The elementary chorus, consisting of select voices from grades 4, 5 and 6, has been working hard and is eager to share the operetta with you.

The first performance will be on Wednesday, May 28, at 7:00 p.m., beginning with a short concert by the elementary band under the direction of Mr. Bob Gruenfelder. The second performance will not include the band concert and will be given on Friday, May 30, at 7:30 p.m.

The main characters are played by the following:

Tom Sawyer - Mark Kelsey
Aunt Polly - Jan Bienhoff
Joe Harper - David Johnson
Huck Finn - Kirk Livingston
Becky Thatcher - Terri McLean
Mary Holz

Mary - Liz Dailey/Jean Bordsen
Injun Joe - Ward Litzenberg
Amy Lawrence - Nancy Holmsten

Other chorus members supply the additional characters as well as the choral background necessary in relating this version of such adventures as whitewashing a "mile-high" fence, curing warts in the graveyard, a trip to pirate island, and a picnic for all in Hannibal, Mo. The chorus is under the musical direction of Mrs. Judi Burson and the choreographic talents of Sue Hajlo.

AUDITIONS HELD

Auditions will be held May 26, 27, 28, & 29 for Equity acting positions in each of six productions to be staged during the 1975-76 season at The Cricket Theatre.

The auditions will be held from 10:00 a.m. to 6:00 p.m. each day at The Cricket Theatre (13th & University Avenues N.E.) in Minneapolis. Auditions will be by appointment only and must be limited to eight minutes; they should include two contrasting pieces from American theatre.

THE BUGLE Changes Hands

Approaching its first birthday, the Bugle got an early present — a permanent home in St. Anthony Park. Park Press Inc., a non-profit corporation formed the end of April to assume responsibility for production of the paper.

Andrew Boss, Gerald McKay and Joe Skovholt were the original incorporators of Park Press Inc. The non-profit company currently has a seven member board of directors: Andrew Boss, President; Gerald McKay, Vice-president; John Hunt, Secretary-Treasurer; Josephine Nelson, Joe Skovholt, Gail McClure and Kurt Steinhauer.

For nearly a year, the Bugle has been owned and operated by Crocus Hill Press, a Grand Avenue firm. The directors view the creation of Park Press Inc. as a development to assure the continuance of a neighborhood publica-

tion which exists solely as a community service.

The Bugle will continue to publish on the third Wednesday of each month. Advertising deadlines are ten days prior to publication, copy deadlines are seven days before.

The new mailing address for the Park Bugle is 2250 Como Avenue, St. Paul, Mn. 55108.

The new Artisans' World Shop and Gallery, 2274 Como Avenue (above the Bibelot Shop) will be the telephone service for the Bugle. Call 646-6707. In addition, messages and materials can be left with them. Their hours are 10 a.m. - 6 p.m., M - F, and 10 a.m. - 5 p.m. on Saturdays.

Community citizens who would like to participate in the publication of the paper are encouraged to call or write.

Committee Named

The Citizens Participation Task Force elected a seven person delegation to negotiate the recommendations of the Task Force with the City Council. Named to the committee from this area are John Rutford and Bill Urman. John was elected chairperson of the citizens participation committee on function. He currently works for the Metropolitan Council. He lives in St. Anthony Park and is a president of the St. Anthony Park Association. Bill, a U of M student, is a resident of South St. Anthony Park, and president of their PAC association.

Other elected members to the delegation are Terrie Johnson, Bill Young, Rosilyn Carroll and Tim Culver, all residents of the Summit-University area.

Book Stop

The Bookmobile stops at the Commonwealth Terrace Community Center every other Monday from 5:15 to 6 p.m. Applications for library cards are available on the Bookmobile. For further information, call 631-0494.

Fire Issue Still Hot

The Fire Department is advocating the consolidation of Stations 23 (Snelling and Midway Pkwy) and 13, to be located on Como across from the fairgrounds. Presently, number 23 houses one engine, one paramedic unit and one crew. Consequently, when the paramedic unit is out, there is no crew to man the engine. The budget doesn't make it possible to hire the 8 men (2 crews) necessary to provide manpower for the engine. If engine 13 (and crew) join 23, there will complete coverage from that location for both emergency vehicles. This consolidation would be timed to coincide with the construction of the Prior extension. After evaluating the time studies, the Fire Department feels the area would be adequately protected with this consolidation.

Station 20 (University and Vandalia) houses a pumper, a ladder truck and the Fire Chief's car. The PAC strongly supports the consolidation of 13 with 20, and feels the area would be better protected with this plan.

The question at this time is whether those affected would support the consolidation of 13 and 20, or 13 and 23. Un-

der the Fire Department's recommendation, there would be the existing two vehicles with crews located at number 20 (University and Vandalia), and three vehicles (one paramedic unit) with two crews (the addition of one vehicle/crew) located at number 23 (Como Avenue). The PAC is advocating three vehicles with crews (the addition of one vehicle/crew) at number 20, and the existing two vehicles (one paramedic unit) with crew at number 23. They suggest the Fire Department hire the necessary crews to supply number 23 with the manpower they need to cover the two vehicles.

We have scheduled a general meeting for all parties concerned, on May 27, 8 p.m. We feel a meeting to include South St. Anthony Park residents and industrialists, North St. Anthony Park residents, City Planning and the Fire Department is very necessary at this time, to allow all factions to offer their questions and opinions.

Editor's Note: The location of this meeting was not available by press time. For additional information, please call Helen at the PAC Office, 646-8884.

The Bugle 2

Blomberg's Super Fair

• QUALITY FOODS •

FRESH FRUITS & VEGETABLES
DAIRY PRODUCTS

Lou's Choice Meats

• FREEZER BEEF •

Special cuts beef, Home-made country
sausage, Fresh fryers & Frozen poultry.

2310 COMO

GROCERIES: 644-2214
MEATS: 644-5335

COMO-RAYMOND STANDARD ANNOUNCES

a Free Car Wash with a Fill!



A hot air dry and a hot
spray wax also available.

Remember — We are also
a full service station.

AMOCO MOTOR CLUB 2102 Como Ave. 646-9960

2276 Como Ave
646-5651

THE BIBELLOT SHOP

pottery, jewelry, toys, cards,
kitchen tools, plus cotton
tops and dresses from India.

Girls Get Gymnastics Program from Parents

A parents' association is organizing a new gymnastics program in St. Anthony Park to begin this summer and to continue as a year-round Amateur Athletic Union affiliated program.

The purpose of the club is to provide an opportunity for girls to receive qualified coaching in gymnastics, to promote sportsmanship, to develop skills, self-confidence and self-discipline.

Girls will learn to perform on the uneven parallel bars, vaulting horse, trampoline, balance beam and to do floor exercise and have the opportunity to enter AAU competition in these events.

Applications for membership should be sent to Connie Hagen, 1342 Raymond Ave., St. Paul, Minnesota 55108.



Report by Maxine Narvaez on the May 12 Open Forum at Washington.

No decision on which desegregation-consolidation plan to implement in St. Paul will be made by the School Board until the Secondary Education Citizens' Advisory Committee (SECAC) submits its recommendation, Supt. George Young said.

Young fielded audience questions and stated that SECAC must now have more time — up to mid-summer — in order to complete its study. In turn, Dr. Young has asked the State Commissioner of Education for an extension of time beyond the fall of 1976 to put into effect the plan the School Bd. ultimately selects for St. Paul schools.

Although the Board exercises final authority on which plan is adopted, Supt. Young assured the people in attendance that the actual choice will be a workable one capable of success and that as much community exposure as possible will be given it prior to its start. He also stated that "there will be no referendum, but every method short of that will be considered."

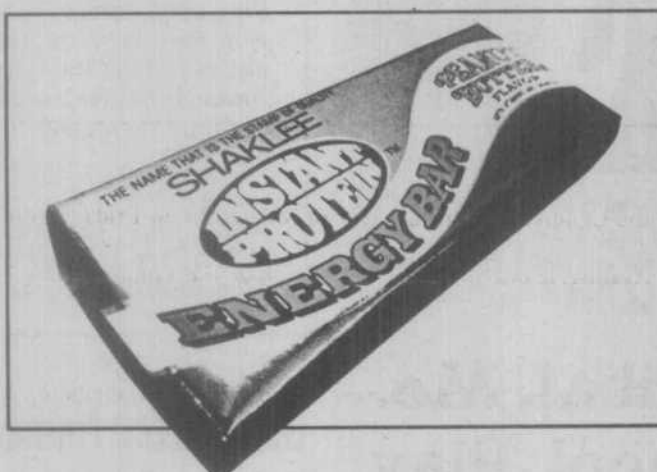
Dr. Young indicated that it "is not the intent of the Board to take away homes unless absolutely necessary." He did, however, point out that the Board is under considerable pressure from the State Board of Education and must get its approval on sites and acreages.

Adequate personnel to take care of actual needs would be provided under any plan at Murray and elsewhere, Dr. Young stated. He also agreed with parental concern on the need to improve the quality of bus riding and safety aboard school buses. He suggested that the state should consider using increased numbers of adults on buses as a legitimate expense factor. Currently, the state pays 80% and the district pays 20% of the busing costs.

The total estimated expenditures for the district top 80 million dollars, according to Deputy Supt. Kenneth Berg.

The projected decline in enrollment for the next academic school year is 2,000 pupils (600 of these at the secondary level and the remainder at the elementary level) with an expected staff reduction near 5%. Enrollment has been declining in the last few years and is expected to continue to do so in 1980.

Parent's Name	address	phone
Gymnast's name	birthdate	grade completed '75
Previous gymnastic experience if any		



The Break that's Good for You!

It's satisfying. It's nutritious.

It's more than a snack. Shaker's Instant Protein™ Energy Bar. This delicious peanut butter flavored energy-booster is made to go with you. Anytime. Anywhere. Shaker's laboratories, under the guidance of Forrest C. Shaker, Sr., have taken the goodness of Instant Protein and added even more nutrients to give you a unique energy bar. We married the flavor of peanut butter with the protein of soy, added vitamins, minerals and lecithin, and covered it all with a thick layer of tasty carob to preserve its freshness and to protect its ingredients. This yummy two-piece bar is a satisfying way to fight the hungries while nourishing your body. When you want something great to eat, whether at work or play, go with Shaker's Instant Protein Energy Bar!

JOHN AND ELEANOR HALL

5 LANGFORD PARK
646-8019

Come to the Green Side...

Green Grass Co-op Grocery
928 Raymond Ave. 646-9095
Hours: M-F 10-9
Sat 9-6
Sun 10-4

A Membership Owned and Operated Co-op

The Great Green Society
Inside Sun Shop
898 Raymond Ave. 646-3838

Distinctively Plants!



The St. Anthony Park Festival

Sponsors

St. Anthony Park Association
St. Anthony Park Library
Association
Micawber's Bookstore
Holmsten Ice Rinks
Threadbenders
H.B. Fuller
Milton Investment
Children's Home Society
O'Donnell's Cleaners
Bibelot Shop
Miller Pharmacy
St. Anthony Park Bank
St. Anthony Park Insurance
St. Anthony Park Realty
Park Hardware
Lamplighter Inne
Park Mobil
Agri-Business Services
JAL Standard



Sponsors

Group Health
American Dairy Association
Standard Station
Dumont's
Neihart-Peterson
Bailey Agency
Four Seasons
Peltier Meats
Blomberg Foods
Albrecht Landscape
Artisans' World
Country Peddler
The Transformed Tree
Key to Freedom
Commonwealth Terrace
Green Grass Co-op Grocery
American Legion Post No. 34
Ramsey County Historical Society
Bauman Insurance Agency
Knudsen Realty
Bridgeman's

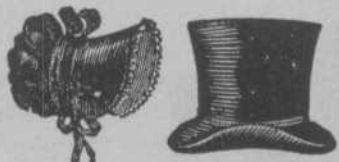


Murray Continues Baccalaureate

Traditions are an important part of life in St. Anthony Park. The graduating seniors at Murray High continue to have a baccalaureate service. It is sponsored by the community churches and the parents of the graduating seniors.

Murray High School is the only school in the Twin Cities to sustain this annual tradition. The churches in the area rotate in hosting the service. And since the service is for the students, they participate by planning most of the program.

This spring the baccalaureate service will be held Sunday, June 1 at 8:00 p.m. in the Como Park Lutheran Church at Hoyt and Sheldon. Jim Grubb of Luther Seminary will address the group.



People visiting and participating in the St. Anthony Park Festival are invited to add their own touch to the Victorian atmosphere with their wearing apparel.

Possibilities include bowlers, vests, long dresses and parasols. Wear one item or don an entire outfit and add to the festival fun.

Area residents will have a chance to view the facilities of the Children's Home Society of Minnesota on Friday, from 4:00 to 7:00 p.m. The Society, located at 2230 Como Avenue, is one of the state's top child and family service agencies.

The Children's Home Society was founded in 1889 by Rev. E.P. Savage. Joseph Elsinger donated the land, including the area where the present building now stands.

It now helps find families for children from Korea, Vietnam, the Philippines, South America, as well as the United States. During April the Society assisted in finding homes for 29 Vietnamese children. Each child that the Society places receives regular medical checkups by a pediatrician and a nurse employed by the Society.

In addition to adoption and foster care, the Society offers several other programs. These include parenting education, child development centers, pregnancy counseling, a group home and family counseling.

Counseling is held both at the center and around the state. These individual and group sessions are aimed at both parents and children. Parents learn about family relationships, communication, individual interaction and how to approach the subject of their adopted child's background. The staff is also on hand to instruct the children on their background.

In 1972, the Society began its first day care center. Now, it has five centers. Three are located in St. Paul, one in Minneapolis, and one in Rochester.

The Children's Home Society has availed itself to the unwed mother. It provided counseling, medical care, living accommodations and employment (as they were needed) to over 355 women in 1974.

In addition, through its Lincoln House in St. Paul, unwed mothers can complete their education or look for work without having the burden of self-support. At present there are eight women, the maximum possible, living at the home for from six to twelve months.

The Children's Home Society of Minnesota is partially funded state wide through the United Way.

BANK PLANS BIG BIRTHDAY PARTY

On June 6, the Drive In/Walk Up Center of the St. Anthony Park Bank (corner Como and Doswell) celebrates its first birthday. Bank parties can be lonely affairs, so as a preventive measure, the bank has planned a big party and everyone is invited.

Just get yourself to the parking

lot of the one-year old facility about 6 p.m. Friday, June 6, and help the bank have a happy birthday. Here's what's planned:

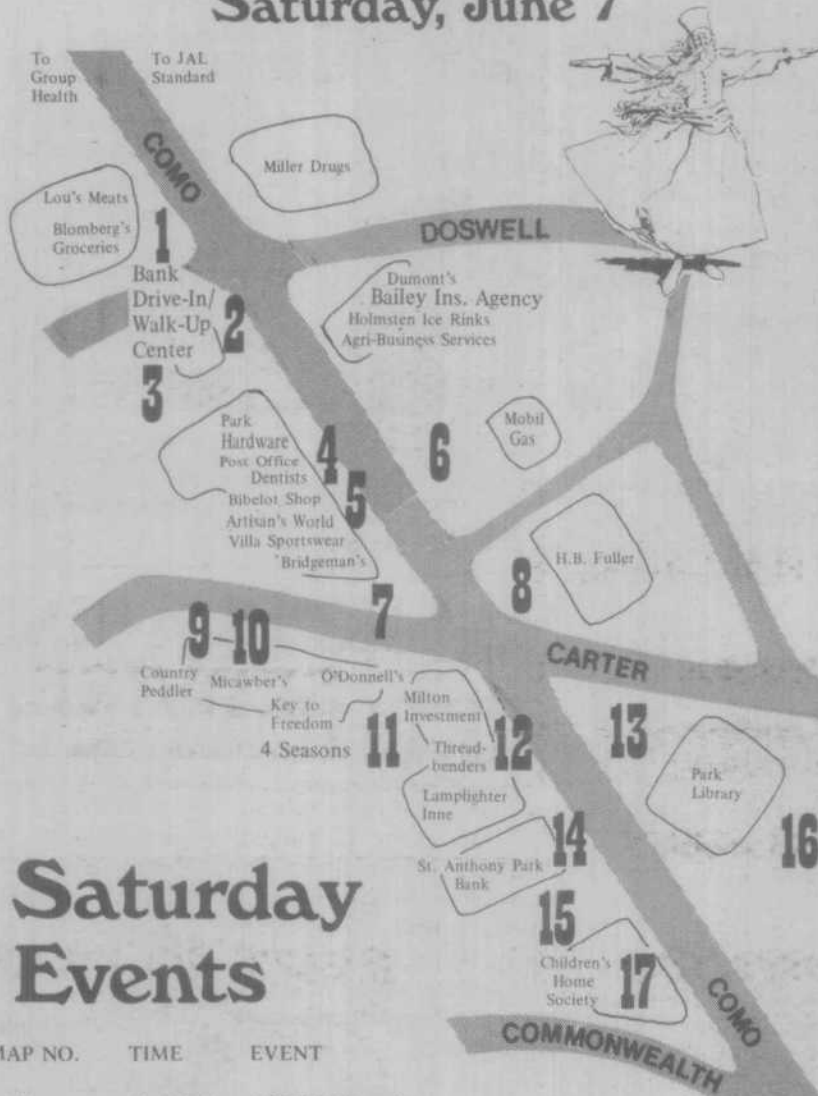
6:15-7:15	Joy folk singers
7:15-7:45	Italian dancers
7:45-8:00	Drawing
8:00-8:30	Italian dancers
8:30-11:00	Igor Razskazoff



Mrs. S.H. Rutford's home at 2107 Commonwealth was once the Northern Pacific Railway Depot, pictured above. It was moved and remodeled. The Women's Philharmonic Association held a House Tour on May 15, to raise money for the St. Paul Chamber Orchestra. Area locations included in the tour were the S.B. Cleland residence at 2090 Commonwealth Avenue, the S.H. Rutford home at 2107 Commonwealth, the Thomas Kusant house at 35 Langford Park, Gibbs Farm Museum at Cleveland and Larpentour Avenues and the old Muskego Church on the Luther Theological Seminary grounds.

The Second Annual St. Anthony Park Festival

Friday, June 6 &
Saturday, June 7



Saturday Events

MAP NO.	TIME	EVENT
13	9-4 P.M.	ART FAIR at St. Anthony Park library lawn and building.
16	9-4 P.M.	BOOK SALE at St. Anthony Park library lawn.
2	10-4	THE VICTORIAN PHOTOGRAPHER: Your portrait ready in 31 min. at St. Anthony Park Bank Drive-In/Walk-Up Center lawn.
1	11-2	COMO ZOO - small mammals, birds, reptiles, pelts in front of Blomberg's.
8	11 A.M.	LAUDERDALE SINGING MOTHERS - Fuller's lawn.
14	11:40-12	JUDY LARSON & BILL HINKLEY, folksingers on the St. Anthony Park Bank Main Building steps.
15	Noon	CZECHOSLOVAKIAN FOLK DANCERS at the Children's Home Society parking lot.
11	12:30	RINA SERKIN, flutist, in the Courtyard off Carter Ave.
3	1 P.M.	CZECHOSLOVAKIAN FOLK DANCERS at the Drive-In/Walk-Up Center parking lot.
6	1:30	PUPPET SHOW with marionettes next to the Mobil Station.
3	2 P.M.	RUSSIAN FOLK DANCERS at Bank Drive-In/Walk-Up Center lot.
11	2 P.M.	FOUR POETS featured in the book, 25 Minnesota Poets, in Courtyard: Franklin Brainard, Keith Gunderson, Jenne Andrews & Michael Dennis Browne. Also Poet Beryl Williams. Open reading following.
1	2:40-3	JUDY LARSON & BILL HINKLEY at Blomberg's.
3	3 P.M.	RUSSIAN FOLK DANCERS at Bank Drive-In/Walk-Up Center lot.
8	3:30-4	JUDY LARSON & BILL HINKLEY at Fuller's lawn.
13	4 P.M.	A public DRAWING for prizes from local businesses at Library lawn.

Friday Events

MAP NO.	TIME	EVENT
17	4-7 P.M.	Open House at Children's Home Society.
3	6:15-7:15	St. Anthony Park Bank Drive-In/Walk-Up Center's First Birthday Party: JOY FOLK-SINGERS from the University of Minn.
3	7:15-7:45	ITALIAN DANCERS at the Drive-In/Walk-Up Center lot.
3	7:45	A public DRAWING for prizes from local businesses.
3	8:00-8:30	ITALIAN DANCERS.
3	8:30-11	IGOR RAZSKAZOFF - The Mad Russian and the Vulgar Boatman Band.
14	Business Hrs.	HISTORICAL PHOTO EXHIBIT at the St. Anthony Park Bank. (thru June).

Many businesses in the Park will remain open until 7 P.M. Friday evening for your shopping convenience.

Saturday Continuous Events

MAP NO.	TIME	EVENT
9	Fri. too	QUILTING DEMONSTRATION at the Country Peddler.
9	Fri. too	PUPPETS at the Country Peddler.
10		HAND & FOOT MASSAGE near Micawbers.
11		PALMIST Linda Zlotnick in the Courtyard.
3	Aft. only	CHILDREN'S PLAY CONSTRUCTION of wood and glue. A fun place to have your children express their creativity. Bank Drive-In/Walk-Up Center.
12	Fri. too	WEAVING DEMONSTRATIONS at the Threadbenders.
1		SPINNING AND CORNHUSK DOLL-MAKING by Minn. Historical Society in front of Blomberg's.
13		JOAN AUTREY, folksinger, Library lawn.
5		FRUIT AND CHEESE STAND by the Green Grass Grocery at the Bibelot Shop.
4		PLAYER PIANO by the Player Piano Service at the Post Office.
6		UNITED STATES FLAG EXHIBIT sponsored by the American Legion Post No. 34 next to the Mobil Station.
7		COMMONWEALTH TERRACE, co-op housing booth, near Bridgeman's.
5		BAKLAVA STAND run by Kiki and Warren Gore near the Bibelot Shop.
		NEIL CHRISTIAN, wandering minstrel.

Wandering



Bauman Ins.
Knudsen Realty

Neihart
Peterson's
Player Piano

Como-Raymond
Standard



Sign Up for Talent Contest

One thousand dollars in cash is the grand prize in the third annual Minnesota State Fair amateur talent contest to be conducted as part of the 1975 exposition, Thursday, August 21 through Labor Day, September 1.

The contest format includes auditions at the Fairgrounds

during June, July and August; county fair talent contests; semi-finals the first 11 days of the Fair; and finals on Labor Day. The contest is open to any amateur group or individual and complete rules and entry blanks are now available at the State Fair Administration Building, St. Paul. There is a \$10 entry fee.

Dog Licenses Due

Falcon Heights residents are reminded that Dog License renewals are due June 30, 1975. Applications are available at the Falcon Heights City Hall, 1644 West Larpenteur Avenue, from 8:30 a.m. to 4:30 p.m. weekdays. License fees are as follows: \$5.00 for males and spayed females (certificate of spaying required), and \$7.50 for unsplayed females.

The Clerk-Administrator has noted that an increasing number of dog complaints are being received, stemming from dogs running loose unattended, defecating on property, and being general public nuisances. The Clerk-Administrator also warns that these complaints are in direct violation of Ordinance 114, and that measures will be taken to guarantee compliance with the ordinance.

De Olde Launderette



Maytag equipment

Coin-operated

Self-service

Daily: 7am-11pm

2228 Carter at Como courtyard

The Rain Forest INDOOR PLANT STORE



Whether it's a philodendron or spathiphyllum, we have 175 varieties in stock in our store.

Practice Plant Parenthood
647 S. Snelling 690-1246

Hours: M-F 10-8; Sat. 9-6

Bridgeman the Tiger says—

Think Treats

- Malts
- Cones
- Triple Treats
- Banana Splits
- Tulip Sundae
- Take-Home Treats

2264 Como Avenue
644-9393

Bridgeman

Monday-Saturday 7 A.M. to 11 P.M.
Sunday 9 A.M. to 11 P.M.

Milton Investment Co.

MARY ANN MILTON, PRESIDENT

REALTORS

Complete Insurance Service, Including No Fault
6 3/4% Financing Available

Specialists in sale of income and commercial properties.

- Homes
- Appraisals
- Property Management

2262 COMO 644-5113; 645-5531; 426-2173

Jeanne's Beauty Shop

Full Service Beauty Shop
Senior Citizen Discount
Free Parking,
First Security Bank Lot.

759 Raymond
644-4211

- FRIGIDAIRE • KITCHEN AID • MAYTAG
- MOTOROLA • MAGIC CHEF • AMANA
- LITTON • ZENITH

1711 N. Snelling at Larpenteur Phone: 645-3481

WARNERS' STELLIAN

Keep Your Roadster On The Road.

Amoco Service 2421 W. Larpenteur Ave.
Atlas Products 646-9111

J.A.L. STANDARD SERVICE

M-F: 7-8 John A. Lindkvist, Owner Sat.: 8-2

100's of Hardcover Fiction, Nature, Art Gift Books: Fantastically REDUCED 50% to 80% Off Original Prices!

Name Publisher Hardcover Children's Books: Only \$1.49 (Values to \$4.95)

Mr. Micawber
Proudly Announces His Fourth Annual

Festival Book Sale

Thursday, Friday & Saturday, June 5th, 6th & 7th

ALL REGULAR STOCK DISCOUNTED

PLUS MUCH, MUCH MORE YOU'LL HAVE TO SEE TO BELIEVE... JOIN US!

MICAWBER'S

2238 Carter (Como and Carter) 646-5506

The Bugle 6

MAY 24-25

One coupon per person

Dairy Queen Brownie Delight 49¢

Regularly .90 Redeemable only at D.Q. No. 12, Raymond & Ellis

MAY 31-JUNE 1

One coupon per person

Dairy Queen Fiesta 49¢

Regularly .90 Redeemable only at D.Q. No. 12, Raymond & Ellis

JUNE 7-8

One coupon per person

Dairy Queen Parfait 49¢

Regularly .90 Redeemable only at D.Q. No. 12, Raymond & Ellis

JUNE 14-15

One coupon per person

Dairy Queen Strawberry Shortcake 49¢

Regularly .90 Redeemable only at D.Q. No. 12, Raymond & Ellis

CLEARANCE

price cut

ON

All Dolls.



All wooden toys.

THE COUNTRY PEDDLER

2242 Carter Avenue 646-1756


Hours: Daily 10 to 5, Thursday evening until 9:30

9 AM to 10 PM
7 DAYS A WEEK

Falcon Heights Pharmacy

BAUSCH
&
LOMB

Sunglasses



Larpenteur at Snelling

Phone: 646-4555

FLEA MARKET

The Northwest Quadrant is having a FLEA MARKET and ART SALE May 31 from 10:00 a.m. to 3:00 p.m. at Langford Park Playground. All proceeds from the day will help finance projects for community youth. We need your donations. If you're spring house-keeping or cleaning out the attic, keep this in mind: "One man's junk is another man's treasure." Drop usable items off May 30th at Langford Park, or call 646-2881 or 645-3740 for pick-up. Come and join the merriment! Who knows what useful items or fine art you may find!

The Northwest Quadrant Youth Service-Bureau is a community corrections project operating at 1691 Lafond. The basic purpose of the project is to help youth between the ages of five and eighteen who are in trouble with the law, but it also focuses on working with youth who have problems at home, at school, or in the community. The goal is to help keep youth out of the Criminal Justice System.

ARTISANS' WORLD MOVES UP AND EXPANDS

Grand opening of Artisans' World Shop and Gallery, in its new location at 2274 Como Ave., is set for Saturday, June 7, featuring a show by several artists from the Twin Cities and surrounding area. Along with the gallery showing of oils, acrylics, sculpture, watercolors, pottery and other art forms will be an all-new display of crafts and imports in the shop area.

Artisans' World opened last July in a downstairs store in Milton Court. The move to its new quarters above the Bibelot was made in order to realize the addition of a gallery, according to Carl Brookins, who operates the shop along with his wife, Jean, and Joe and Sharon Faucette. "We expect to have regular shows by some of the outstanding artists of this region," Brookins said.

It is expected that several of the artists will be present throughout the day. Refreshments will be served.

Among those whose works will be included in the Grand Opening show are Jo Lutz Rollins, Barbara Raat, Florence Hill, Dorothy Hall and John Clarke of Minneapolis, Mary Helen Harty, Arden Hills, Floyd Martin, Valley City, N. D., and David Willig, Hammond, Wis.

Bilgebarf from Bedlam

Editor's Note: Sir Perphlous Bilgebarf has taken an abrupt sabbatical. The following bit of correspondence was received from him, of late—for which we can not begin to thank him:

My dear readers,

According to one eminent meteorologist, Thomas Stearns Eliot, "April is [was] the cruelest month..." It has past. So too has the need for lengthy explanations about climatic phenomena such as those to be found, I presume, in the *Wasteland*.

By sheer, but beneficial, accident (*felix culpa*) I happened across a comment by Martial, an epigrammatical mathematician, I would guess. His comment, "Divisum sic breve fiet Opus." (Divided the work will thus become brief) inspired my current study. Presently, I am culling data for a scholarly paper which I've entitled "The Division of Significant Dates." Little Wonder that this matter has been all but ignored before I saw fit to consider it.

Consider, e.g., 1660, the English Restoration, divided by 1066, the Norman Invasion, equals 1.5572232. Further, 1798, the "beginning" of the Romantic Age, divided by 1776, the Anglo-American Conflict, equals 1.0123813. And so on. I resist the temptation to offer further—and equally conclusive—examples of my compilations; the conclusion drawn from this data is nothing if not obvious.

The conclusion is this: The affairs of all existence, whether mean or significant, equal a gross quotient of a little more than two months. Division without remainder, that. As with Mr. Eliot's prediction, no further explanation is necessary to thus annihilate time and space. I am, dear readers,

Your most humble
and obedient servant,
Sir Perphlous Bilgebarf, Esq.

Artisans' World

Now at 2274 Como



GRAND OPENING SHOW JUNE 7



Shop & Gallery

10-6

More Fine Art - Crafts - Imports

646-6707

Rutford Named to NSF Polar Post

Reared in St. Anthony Park, veteran antarctic researcher Robert H. Rutford, director of the Ross Ice Shelf Project at the University of Nebraska-Lincoln, will become Head of the National Science Foundation's office of Polar Programs in Washington, D.C.

Bob Rutford is married and has three children. The son of Mrs. S.H. Rutford, 2107 Commonwealth, Dr. Rutford's late father Skuli Rutford was head of the University of Minnesota Extension Division for years. His brother John lives in St. Anthony Park and currently serves as President of the St. Anthony Park Association.

Dr. Rutford earned his B.A., M.A., and Ph.D. degrees at the University of Minnesota, where he also served as research assistant and research fellow. He was leader of the University's research team to Antarctica in 1963, after having participated in two previous antarctic expeditions. He became assistant professor of geology at the University of South Dakota in 1967, and associate professor in 1970. He was chairman of the Department of Geology, and later the Department of Geology and Physics, from 1969 until he left to join the University of Nebraska in 1972.

Deeply interested in sports, Dr. Rutford was an outstanding football player for the University of Minnesota. He was also head football and track coach at Hamline University from 1958-62 and has been actively involved in AAU and Junior Olympic swimming events on local, state and regional levels.

An associate professor of geol-

ogy at NU and a specialist in antarctic geology, Rutford has been conducting research on the frozen continent since 1959.

The Ross Ice Shelf Project which Rutford headed at NU is an international cooperative research effort aimed at learning more about the Ross Ice Shelf, a floating slab of antarctic ice up to 1,800 feet thick and about the size of France. The study involves drilling through the ice shelf to exam-

ine the ice, the underlying sea water, and the ocean floor. One of the aims of the various research projects is to seek information bearing on the recent glacial and climatic history of the Antarctic continent.

James Zumbege, chancellor of the University of Nebraska-Lincoln, said the University "sustains a great loss as Dr. Rutford departs for Washington D.C."



B&J Midway Floral
(formerly Lindigs)
Remember Loved Ones
on Memorial Day, May 26.
Variety of Freshly Cut Flowers
Plants and Power Rentals.
All varieties of
rose bushes.
Flowers Sent Worldwide.
Bert and Joyce Gimmestad
1871 Larpeur 646-1972

DON'T WASTE ENERGY.

Every summer over 35,000 kids age 14 through 18 in the metropolitan area get out of school. And every summer many of them want and need work, but don't know where to find it.



Every summer thousands of homeowners and businessmen need part-time help. And every summer many of them don't know where to find it. All of which results in an unfortunate waste of energy.

But it doesn't have to be that way. Because for the last two years the First Banks and the YMCA have been successfully bringing kids who need work and adults who need help together.

It's called Rent-A-Kid.



FIRST SECURITY STATE BANK
OF ST. PAUL ■ UNIVERSITY AT RAYMOND

Rent-A-Kid for kids.

For kids, it works like this: if you're between 14 and 18, just go to your participating First Bank or "Y" branch and register. You sign up for the kind of work you want to do, and what your age makes you eligible for under Federal and State Labor regulations.

You get paid up to \$1.80 an hour, depending on the type of work. And we'll try to match you with jobs close to your home.

Rent-A-Kid for adults.

For homeowners and businessmen, it works like this: if you need help with yard work, cleaning, painting, washing windows, etc., you simply register for a Rent-A-Kid at your nearest participating First Bank or "Y", call the Rent-A-Kid office at 332-2431, or send in the coupon below.

But the sooner you both register, the sooner we'll be able to tell how many jobs we have for Rent-A-Kids, and how many Rent-A-Kids we have for jobs.

And the sooner we'll put a lot of good energy to a lot of good uses.

Schneider Lincoln-Mercury Co.

Mark IV Lincoln Mercury Cougar Monarch
Montego Comet Capri

WHERE SALES AND SERVICE

GO HAND IN HAND

1020 University Avenue St. Paul, Minn. 55104
Tel. 645-0701



DANDELIONS

need never embarrass
you again



Which of us has not experienced the frustration and the embarrassment of that most conspicuous weed, the dandelion. Its yellow blossom marks us as the keeper of an inferior lawn; its white tassles brand us as a bad neighbor. Golf Brand Triple Tonic is perhaps the finest cure available. It is the perfect fortifier of grass, killer of dandelions and other loathsome weeds, and supplier of that basic element, iron.



Triple Tonic

\$8⁴⁵

the 20 lb. bag.
Reg. \$8.95.



PARK HARDWARE HANK

2290 Como Avenue
644-1695



Put a Bea in Your Bonnet
with a Honey of a Style!

BE A QUEEN

Bea's
BEAUTY SALON

Como & Raymond
644-4114

Also 2960 N. Snelling, 633-6326

The Lamplighter Inn



Try our Mozzabeef Sandwich —
Exclusively at the Lamplighter.



2260 Como Avenue
644-9116
Open 8 A.M. to 8 P.M.

HARD SALAMI

or Genoa Style
Regular low price \$2.29/lb.
NOW \$1.89/lb.

One-year Aged COLBY CHEESE

Regular low price \$1.49
NOW 99 CENTS/lb.

New York Medium Aged
CHEDDAR
Regular low price \$1.99/lb.
NOW \$1.69/lb.

ALL PRICES GOOD UNTIL SUPPLIES ARE GONE.

Compare our quality and low prices anywhere,
and we're sure you'll be pleased with *Four Seasons*.

Be sure to stop by our booth in the
Courtyard during the Park Festival.

OPEN 7 DAYS: M-Sat. 9-6, Sun. 10-5
In the Courtyard at Carter and Como
Phone 644-7144

**FOUR SEASONS
CHEESE SHOP**



Park Man Panelist

St. Paul Councilman and St. Anthony Park resident John E. Christensen was a panelist at a Midwest regional conference on the Economic Recession and Racial Justice, held in Madison, Wis., May 9 and 10.

The conference attempted to focus attention on the continuing need to work toward genuine equality of opportunity in employment despite a downturn in the national economy which has affected minority groups far out of proportion to their numbers. Christensen appeared on a panel discussing affirmative action legislation in a time of stringency of federal, state and local budgets.

St. Anthony Park



If you like old homes, you have a real treat in store. On Sunday, May 25, members of the St. Anthony Park Association are invited to participate in a house tour. Two area residents, the Thomas Kusants of 35 Langford Parkway and the Dennis Grebners of 85 Langford Parkway, have agreed to open portions of their homes to Association visitors.

In addition, Mr. and Mrs. Thomas Stack who now live in the old McGill house have agreed to discuss the history and architecture of their home.

All interested members should meet at the Community Room at Langford Park at 3:30 p.m., Sunday, May 25. Dennis Grebner will discuss the interior remodeling of their home, and Thomas Kusant will talk about the oak wood carving in their dining and living rooms. These homes are within walking distance of one another from the Community Room, so it's an excellent opportunity to get some exercise and sample the architectural richness of two of the Park's older homes.

St. Anthony Park Realty

Specializing in St. Anthony Park and Environs
— Residential Properties

**on bank premises
at 2250 Como Ave.**

Listing and Inquiries Solicited

PHONE: 647-0131

John D. Hunt, Broker

H.B. Fuller Company...

part of the

St. Paul community since 1887.

Today, manufacturing industrial adhesives, construction mastics, floor and wall systems, floor maintenance equipment and specialty chemicals in cities across the United States and in 17 countries worldwide.

SHARRETT'S LIQUORS

Liquors — Cordials

Beer (Keg — Bottle — Can)

Champagne, Imported & Domestic

We carry a wide variety of wines,
both imported and domestic.



We deliver to the Park area.
Customer parking in the First
Security Bank lot.

CORNER UNIVERSITY
& RAYMOND, 645-8620

Dumont's HOUSE OF BEAUTY

Choose the services that
suit your needs.

Wigs and Hair Pieces
Specialist Judy Cullen

Men's Hair Cuts
Styling—Perms—Color

Curly, Carefree Perms

Custom Coloring

Blow-Combing

Re-conditioning

2301 Como 646-7975



GIBBS FARM MAKES REGISTER

Gibbs Farm has been entered in the *National Register of Historic Places*. The *Register* is maintained by the National Park Service and is a listing of the places and things in America which are deemed worthy of preservation.

The Herman and Jane DeBow Gibbs Farm, owned by the Ramsey County and St. Paul Historical Societies, is a 1½ acre remnant of a 160-acre farm homesteaded in 1848.

A proposal is being considered

to combine programs with the Ramsey County Historical Society's Gibbs Farm Museum to provide a living, operating pioneer farm for the public.

The farm animals which would include a small dairy herd, a small work horse, goats, lambs, pigs and chickens would be owned and housed in the winter by Como Zoo.

Ideally, during the summer months the farm would operate like any self-sufficient pioneer farm.

Town Tillers Get Gardens

by Becky Iverson

Urban farmers are being given another chance this summer to develop their horticultural talents. About 525 garden plots, each measuring 15 by 20 ft., located just east and north of the Gibbs Farm Museum, were immediately snatched up by prospective planters.

The land, which is owned by the University, was leased to the St. Paul Historical Society last year. The 99-year lease was the result of several years of negotiations and the realization of a common goal: the preservation of the open spaces surrounding the farm and the recreation of the original farm setting.

In the interest of preserving the country's agricultural heritage, the Society joined forces with the Ramsey County Agricultural Extension Service. Under the direction of extension agent Joseph Peterson, the plots were measured, the soil prepared, and the rentals handled. Advice and assistance will be available throughout the growing season to amateur agriculturalists.

The \$5 rental fee covers the initial fertilizing and tilling of the plots, which were ready for seeding May 10. A change in plans for next year's program may include a different renter-selection process. Rather than the 'first-come, first-serve' basis used the first two years, renters may be selected by use of a lottery next year.

Miller Pharmacy Celebrates 50 Years

Pharmacy is fifty-one years old on the corner of Como and Doswell. Mr. Ed Groh opened a small pharmacy in the present store building on March 1, 1924. Mr. Groh operated the pharmacy for seven years and sold it to an employee pharmacist, Mrs. Florence Hively. Mrs. Hively sold the store to Bert Miller on June 1, 1932.

Mr. Miller was raised in Fari-bault, Minnesota. He graduated

from the Highland Park College of Pharmacy, Des Moines University, now part of Drake University. In the 1930s, the Como business area boasted two pharmacies, two groceries, three service stations, a garage, the bank, a hardware, and other small ventures.

After the Second World War, Mr. Miller added to the building and more than tripled the retail selling area. On January 22,

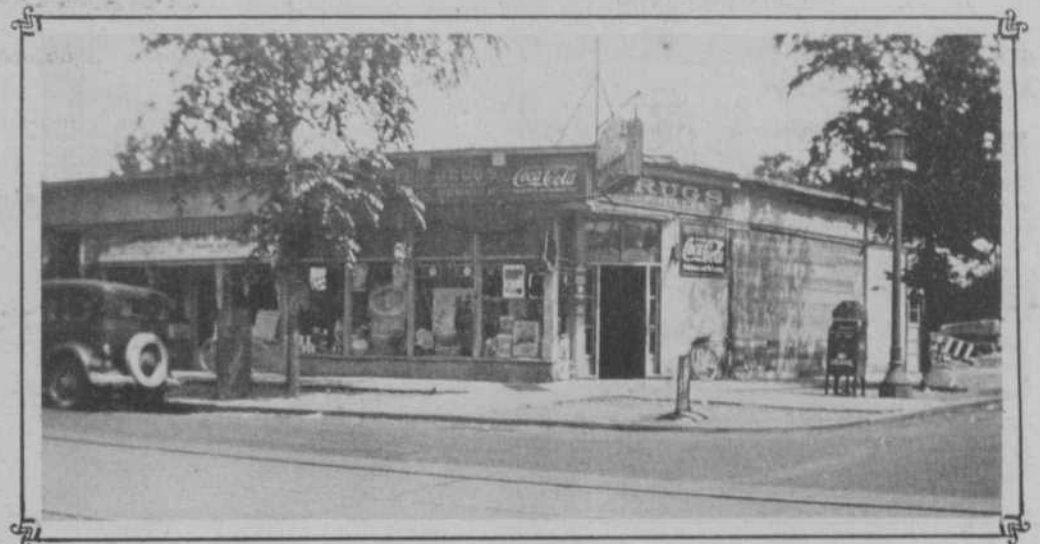
1949, the business was incorporated to include Bert and Bea Miller, Arnold Delger, and Al and Lora Lawson as owners. Bob Bulger joined the corporation in 1954.

The building was enlarged again in 1952 and 1956 to include the apartments, accountants' office and increase the doctors' office space. Extensive remodeling was done in 1974 to provide better service for our expanded community



A HALF CENTURY OF PHARMACY

"OVER ONE MILLION PRESCRIPTIONS"



Although our look has changed, Miller's is still dispensing old-fashioned service.

Come and help us celebrate our 50-year mark on June 7th!

"Free Orchids for the Ladies"



MILLER PHARMACY

Como and Doswell Avenues, St. Paul
646-3274 644-8411



NEXT SUNDAY, ATTEND THE CHURCH OF YOUR CHOICE

CORPUS CHRISTI CATHOLIC

Mass: Sat. 5 PM and Sun. 8, 10 and 11:30 AM.
9:15 and 10:30 at school.

ST. MATTHEW'S EPISCOPAL

Sun. 8 and 10:30. Communion 1st and 3rd.
Prayer 2nd and 4th.

ST. ANTHONY PARK LUTHERAN

Sun. 8:45 and 11 AM. Communion both
services 1st and 11 AM 3rd Sun.

ST. ANTHONY PARK CONGREGATIONAL

(United Church of Christ) Sun. 10 AM Worship
and Church School.

ST. ANTHONY PARK UNITED METHODIST

Sun. Education Hour 9:30, Worship 10:45 AM



THE BUGLE COMMUNITY CALENDAR



S U N M O N T U E W E D T H U F R I S A T	Through May FIBERS: Members Show, Weavers Guild of Minnesota, 427 Cedar Ave, Mpls. WEAVING & BASKETRY: Weavers Guild, St. Paul Student Center, U. of M. June 2-27 ST. PAUL STUDENT CENTER: North Star Gallery: Rebecca Jerdee-Stitchery. Rouser Room Gallery: Elizabeth B. Watson-Mixed Media. Main Lounge Gallery: Louis Safer-Oils and Acrylics. Display Cases: Ray Bryan-Ceramic Stoneware.		25	HOUSE TOUR: St. Anthony Park Association members, Community Room, Langford Park, 3:30 p.m.	1	8	HISTORIC HOUSE TOUR: Ramsey Hill Association, 11 a.m. to 5 p.m.
			26	MEMORIAL DAY	2	9	PAC BOARD MEETING: 2280 Hampden Ave., 7 p.m. BICENTENNIAL MEETING: Falcon Heights City Hall, 7:30 p.m.
			27	COMMUNITY MEETING: Consolidation of fire stations. 8 pm. For place, call 646-8884. ST. ANTHONY PARK ASSOCIATION MEMBERSHIP MEETING: 2129 Commonwealth Ave., dinner at 6 pm, business meeting and program follow, adjourns by 8 pm.	3	10	SUMMER READING PROGRAM: June 9 to August 1, Ghoul's and Giggles, St. Paul Public Libraries, registration ends July 10.
			28	HUMAN RIGHTS COMMITTEE: Falcon Heights City Hall, 7 p.m. NOON OUTDOOR CONCERT: U. of M. Concert Band, St. Paul Student Center, 12:00.	4	11	
			29	SUMMER CARE OF VEGETABLES: A "Learn at Lunch" lecture, second floor Central Library Auditorium, 15:15-12:45 p.m. SUPERSTARS KICK-OFF: Waksurs Outing Club, St. Paul Student Center, 7:30 p.m.	5	12	FALCON HEIGHTS: Regular Council Meeting, City Hall, 7:30 p.m.
			30		6	13	June 6-7 ST. ANTHONY PARK FESTIVAL: Victorian theme for the 2-day affair. Don a bowler hat, a vest, or grab a parasol and stroll down Como and participate in all the happenings.
			31	SUMMER LIBRARY HOURS: Effective through Sept. 1, Mon-Tues, 12:30 p.m.-9 p.m.; Wed-Fri, 9:30 a.m.-5:30 p.m., closed Saturdays. FLEA MARKET and ART SALE: sponsored by the N.W. Quadrant at Langford Park Playground, 10 a.m.-3 p.m.	7	14	FLAG DAY



TRY A BUGLE WANT AD AT TEN CENTS PER WORD WITH A \$1 MINIMUM. SEND YOUR AD WITH CHECK ENCLOSED TO: The Park Bugle, 2250 Como Ave., St. Paul, Mn. 55108.

WANTED TO BUY: House in the vicinity of Luther Theological Seminary. Large living room and formal dining room desired. Lloyd Svendsbyes, 646-4323 or 644-6967.

FOR SALE: '74 12 X 60, 2-BR mobile home, air conditioned and has laundry. Call 788-4648 after 6:30

GUITAR LESSONS: \$3.00 each. Call 646-8278, area location.

ONE BEDROOM OR EFFICIENCY APT. wanted in Park area. Steve Adams, 646-9382 or 633-6170, ext. 5646.

PROFESSIONAL PHOTOGRAPHIC Services — portraits, pets, parties, cards — business and post, weddings, events — color and black and white. Call Artisans' World, 646-6707.

REMODELING CABINETS: Small additions, no job too small. Free estimates. 644-0288.

Hermes Floral Co.



Wide Selection
Potted Rose Bushes.

Wide Selection of
Vegetable and
Flower Seedlings.

2001 W. Larpenteur
646-7135

FOR REGAL SERVICE



Park Service Inc.

Mobil Service **Tires Batteries**
Expert Auto Repairing

2277 Como Avenue
644-4775 or 644-1134



NOTHING STANDS IN THE WAY OF OUR FAST, FREE DELIVERY

Nothing. No chicken liver salads. No spaghetti. No ice cream. No potato salad. No kidding. We deal in pizzas only. The finest pizza we can make. And we usually deliver it within 30 minutes of your call. And our pizza is made of fresh ingredients only. They are never frozen. Never. So give us a try the next time you crave really good pizza. See why Domino has grown from a single shop in Ypsilanti to franchises throughout the country.

The Domino People are pizza people, Period.

DOMINO'S PIZZA

FROM THE PIZZA PEOPLE

DOMINO'S DOUGH

DOMINO'S SPECIALIZES IN SUPERB PIZZA AND FAST FREE DELIVERY

\$5.50 TOWARDS YOUR NEXT PIZZA.

Name _____
Phone _____

To validate coupon fill in name and phone number.

One coupon per pizza please... Thanks.

GOOD UNTIL JUNE 15, 1975

The All American Bar



2554 Como Ave., St. Paul
Liquors and Lunch
Game Room



NEIHART-PETERSON

PLUMBING & HEATING



Alterations & Repairs
No Job Too Small

2097 Como Avenue
646-1996

Emergency No.: 429-3462

NOW

in
ST. PAUL

APPEARING DAILY IN THE NUDE

The Widest Selection of unfinished furniture in Minnesota. Buck's Unpainted Furniture has over 2,000 items in stock. We purchase from 40 different manufacturers. All items displayed on our 5,000 sq. ft. stage. Expect the Unusual!

Buck's Unpainted Furniture

1639 W. LARPEUR 646-9647
(Just west of Snelling)



We're Excited!

Try Our New Auto and Homeowners Department

Also Motorcycle Insurance

St. Anthony Park Insurance

2250 Como Avenue
Call — 647-0131
Marie Schwebach
Rosemary Huppert
Karl Klein, Jr.

THE PARK BUGLE
2250 Como Avenue
St. Paul, Minnesota 55108

**Some of the best things in life
are FREE - at St. Anthony Park Bank
Like absolutely FREE CHECKING**

With the economy as it is today,
you're tired of gimmicks.
You're looking for honest values,
and sensible ways to handle
your money.

At St. Anthony Park Bank
we have an honest value for you.
Absolutely Free Checking.
That means no minimum balance,
no service charges.
No gimmicks.

We think our new Free Checking
is a sensible way to handle
your money, for you and for us.
Come in and talk to us about
Free Checking. We think you'll find
some of the best things
in life are free at
St. Anthony Park Bank. Honest.

St. Anthony Park Bank

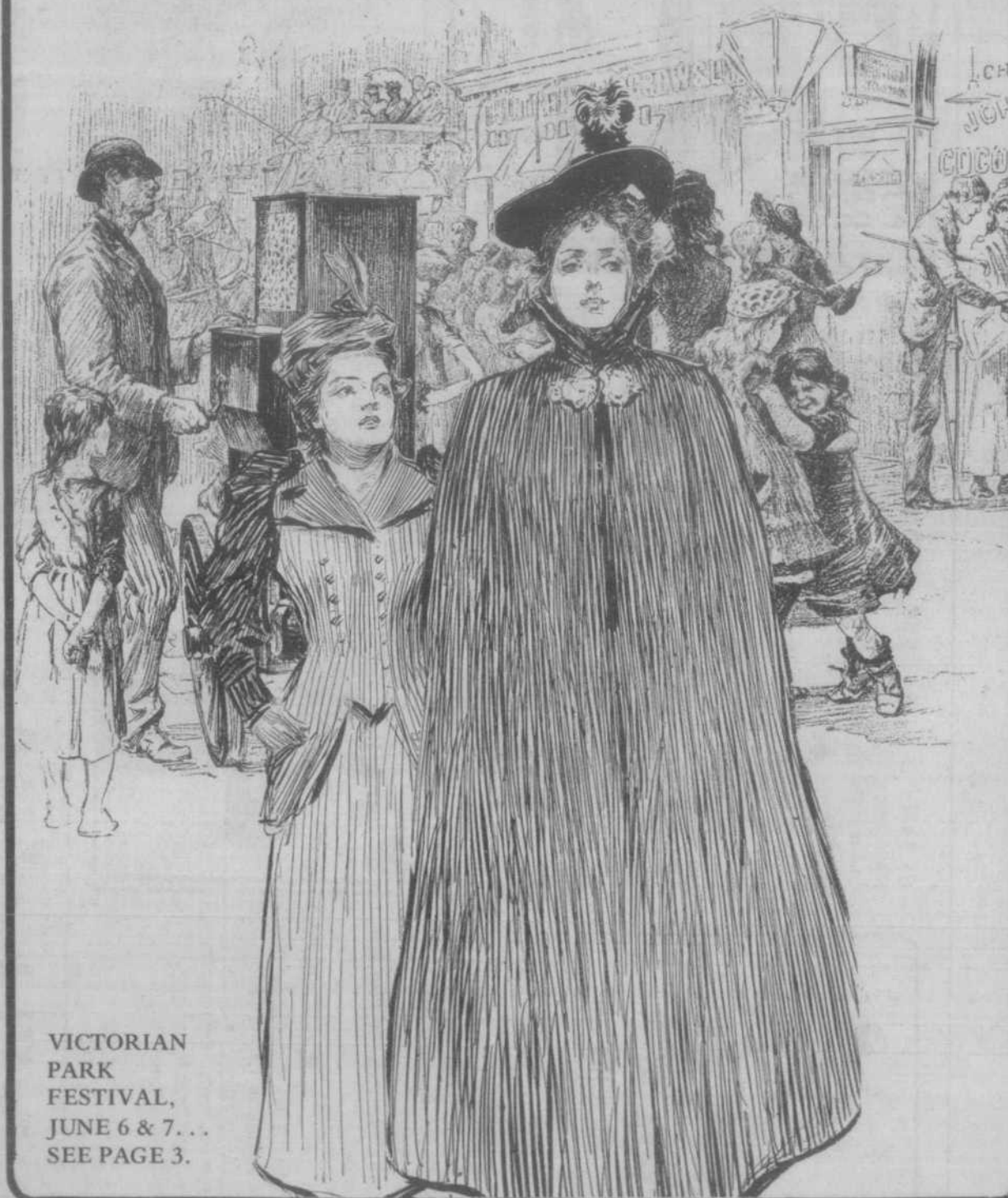
2250 Como Ave./St. Paul, MN 55108/647-0131

Main Bldg.: 9AM-3PM — M-TH
9AM-6PM — FRI

Drive-In / Walk-up Center, Como & Doswell: 7AM-6PM — M-F
9AM-NOON — SAT

The Park BUGLE

MAY, 1975
VOL. 1, NO. 11



VICTORIAN
PARK
FESTIVAL,
JUNE 6 & 7...
SEE PAGE 3.